

An aerial rendering of the Forest City development, showcasing a mix of modern high-rise buildings with green facades, low-rise commercial and residential structures, a large swimming pool, a beach, and a coastal area with sailboats. The scene is set against a bright blue sky with scattered clouds.

FOREST CITY

Co-Building a Green and Sustainable City for Humanity

Presented by Kelly Wang
Vice General Manager
Overseas Division of Country Garden Group

31st October 2017



Country Garden

Country Garden (HK. 2007) is a world-leading property developer founded in 1992. The Group runs a centralized and standardized business model that comprises construction, decoration, property management, property investment, as well as hotel development and management. Country Garden offers a broad range of products and services to cater for diverse market demands.

As a practitioner propelling China's 'New Urbanization', over the past 25 years, Country Garden has constantly pursued towards building a harmonious society.

History

1992

- Founded in **Shunde**
- Launched the very first project **Shunde Country Garden**.

2011

- Started overseas business.
- **Malaysia Region**.

2014

- Launched our first project outside of Asia (**Australia**).

2016

- Launched the **Smart Town Strategy**
- **Forbes Global 500**

2007

- Listed on **Hong Kong** Stock Exchange

2013

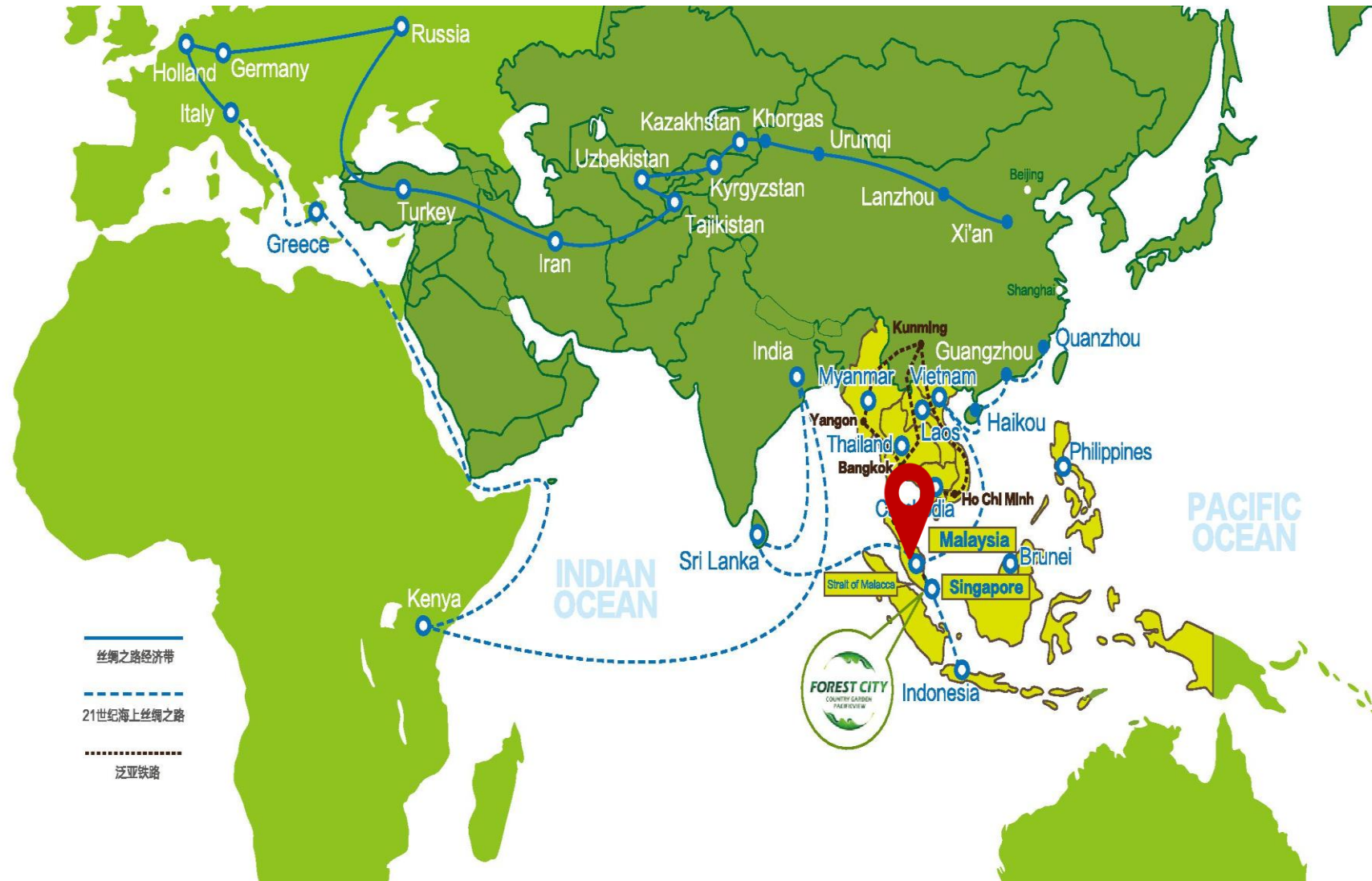
- Annual sales revenue reached over **100 billion RMB**

2015

- Launched **Forest City**
A Model of Future Cities

2017

- **Fortune 500**



Forest City

A Smart City with Industry-Integration
A Prime Model of Future Cities

Perfect Location

Located in the Johor Strait between Singapore and Malaysia

Only 10 minutes' drive to Singapore-Malaysia Second Link bridge

Strategic Shareholder

EDSB, directly controlled by the Johor Government with extensive experiences in the development of Iskandar Special Economic Zone

Eco-friendly City Concept

Vertical greening and multi-layered design

Advanced vertical greening and roof-top garden

Pedestrian-vehicle segregation

Multi-layered traffic design

Railway Running Above Ground

A Car-Free Sustainable City

Highway Network Docked Underground

Parking Spaces



City-Industry Integration, Contribution to Global Prosperity

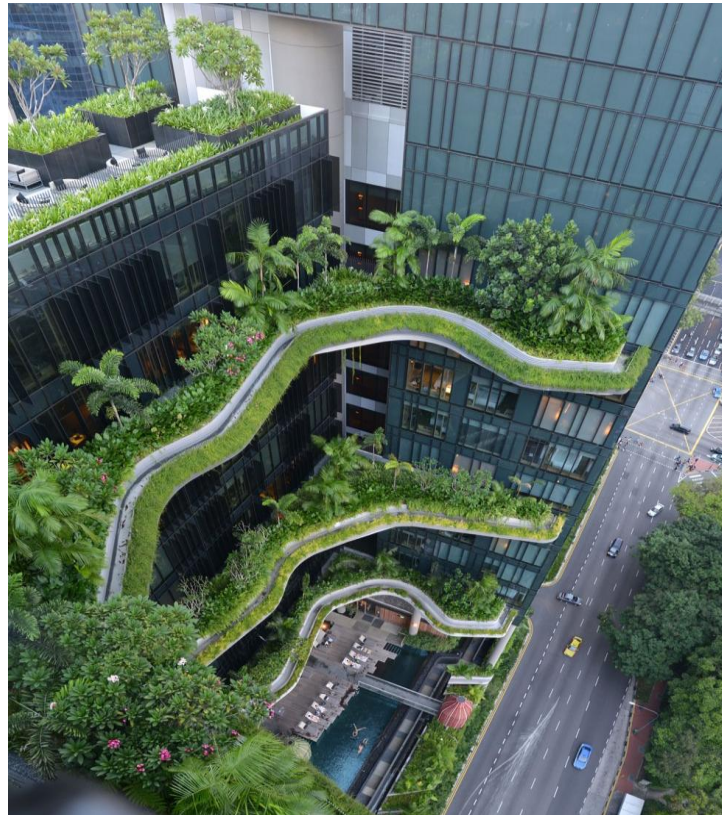


Planned area spanning nearly 30 square kilometer

An Intelligent Manufacturing Park covers 6 square kilometer with 1.9 square kilometer as the first phase of Industrial Building System Base

Global Tech Park in Island One covers 1 square kilometer

A Prime Model of Future Cities, Better Life for Mankind



Stronger Bond Between Malaysia & China

- Chairman Xi: "China clearly values its relationship with Malaysia"
- PM Najib Razak: "Malaysia and China can cooperate closely on the belt-road initiative"

Government Incentives on Business and Talents

- Policy Paper has been issued in Nov 2015;
- Granted Duty Free Area status in March 2016
- Tax incentives granted for tourism & MICE, education and healthcare

Global Contribution

- RM 197.6 Bn (USD 45 Bn) GDP contribution to Malaysia
- 220,000 job opportunities by 2035
- Entrepreneurship-friendly environment
- Business opportunities for small and medium-size enterprise

Strategic Alliance with World Leading Corporations



HIKVISION



accenture
High performance. Delivered.

S A S A K I



Tencent 腾讯



OCEANO 欧神诺在线
瓷砖空间整体解决方案



FOXCONN®



FORMATION GROUP



Deloitte Tax Services
Sdn Bhd



Industrial Building System



The production capacity of Phase 1 factory has already **topped the world**.

As of 2014, almost 1,700 buildings, mostly government ones, were built by IBS in Malaysia.

Forest City will fully implement industrial building system in the coming three to five years.



Buildings Made from Industrial Building System





China

497 million US dollars donated on education, poverty and disaster relief
3 charity schools were built to help students who can't afford to go to school



Malaysia

About **500,000 US dollars** donated to school and institutes, including

- A fund at Technological University of Malaysia, providing extra dormitories and teaching equipment to local schools, as well as providing food and money to the east coast of Malaysia when it was flooded.

感谢聆听
Thanks for Listening