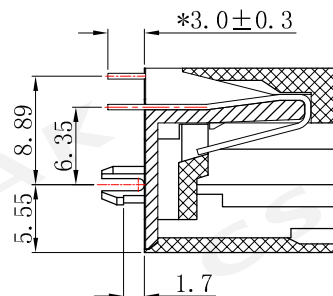
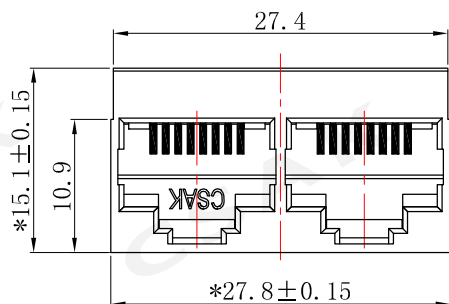
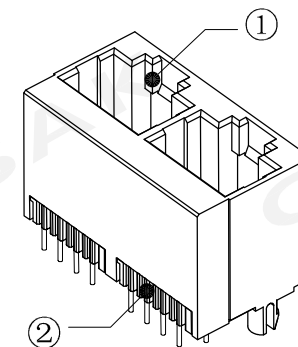
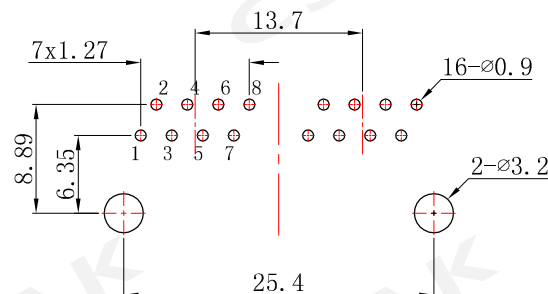
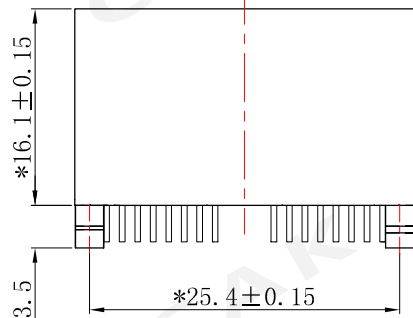


ROHS Compliant

REV.	DESCRIPTION	DATA

PCB Layout



DESCRIPTION:

1. OPERATION TEMPERATURE RANGE: -40°C TO 85°C;
2. LOAD RATING: 125VAC, 1.5A;
3. CONTACT RESISTANCE: 30mΩ MAX;
4. INSULATION RESISTANCE: 1000MΩ MIN;
5. WITHSTAND VOLTAGE: 1000VAC 60S;
6. MECHANICAL ENDURANCE: 750 CYCLES MIN;
7. RECOMMENDED PCB THICKNESS: 1.6mm.

BOM				
NO.	PART NAME	DWG NO.	Q' TY	DESCRIPTION
1	HOUSING	5212.50.001	1	PBT (Yellow 114C)
2	INSERT	5212.20.001	2	Contact Material:phosphor bronze gold plating 0.5 μ", ∅0.46mm

CSAK ELECTRONICS CO., LTD		DESC:RJ45 立式 1x2 8P8C PBT黄色114C			
TOLERANCES	PYPE	5212-88-100-001-77	DRAWING	P/N:5212.10.001.771	
0~6 : ±0.1	CUSTOMER		CHECK	UNIT	SCALE
6~30 : ±0.2	CUST P/N		APPROVED	mm	1:1
30~120: ±0.3				VIEW	REV.
				AO	