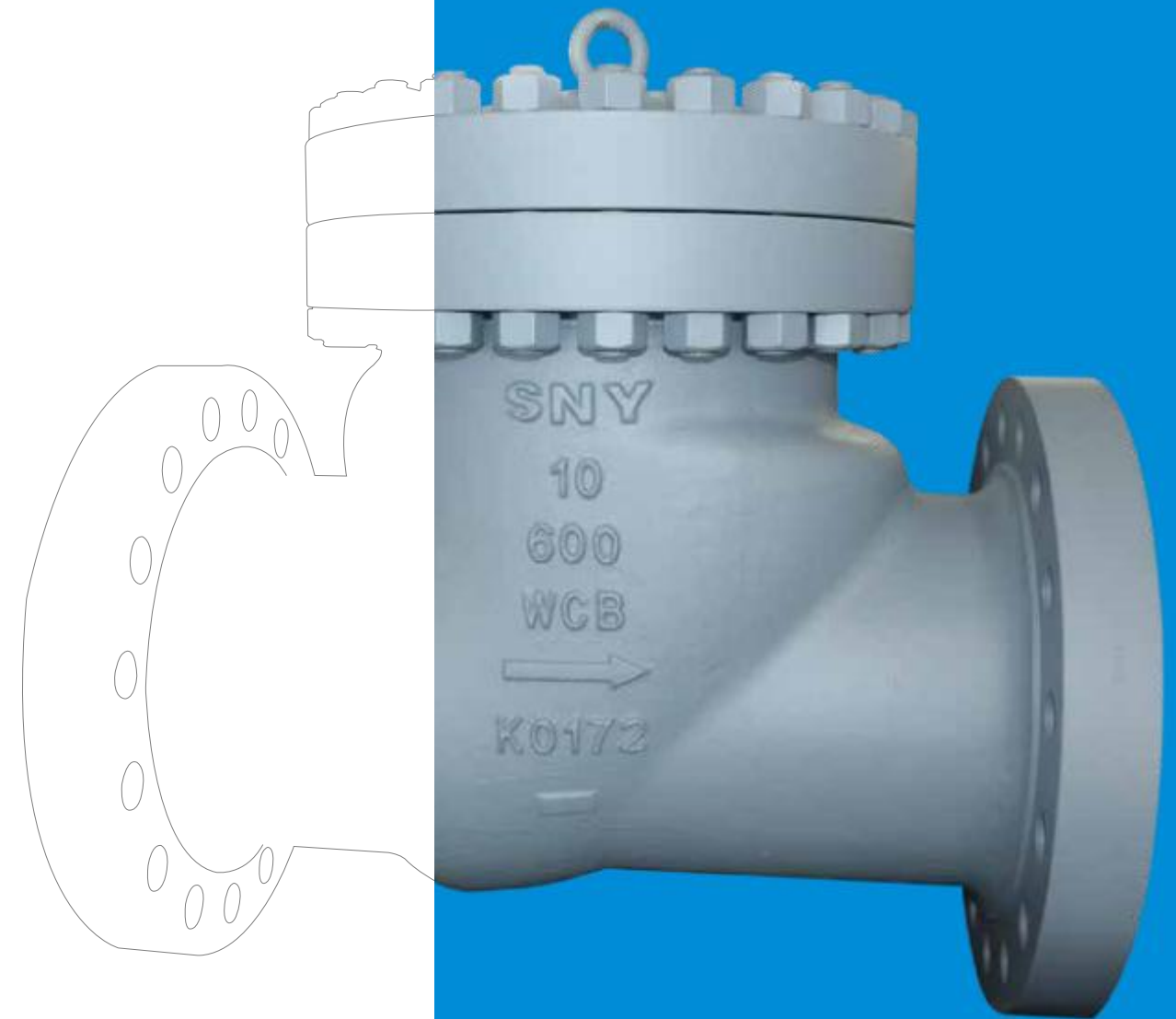




API 6D

FULL OPENING SWING CHECK VALVE



SNY VALVE (YANCHENG) CO., LTD.

Add: No.36, South Taishan Road, Yancheng Economic-Technological Development Zone,
Yancheng, Jiangsu Province, P.R.China
Tel: 86-515-89902217 86-515-81602566
Fax: 86-515-89902217
E-mail: sny@snyvalve.com.cn
Web: www.snyvalve.com.cn

Note:

The information in this catalogue is for reference only, and the details are subject to the actual product. For more information about the product, please contact us. SNY VALVE reserves the right of final interpretation. The copyright of this catalogue belongs to SNY VALVE. Any copying, transferring or any other usage is prohibited without permission.

CONTENTS

- 01** COMPANY PROFILE
- 03** QUALIFICATION & CERTIFICATE
QUALITY CONTROL
- 05** TECHNICAL INNOVATION
TECHNOLOGY PATENT
- 07** INTRODUCTION OF FOUNDRIES
FACTORY MANAGEMENT&FACILITIES
- 09** INDUSTRY APPLICATIONS
FIGURE NUMBERS
- 11** DESIGN FEATURES
- 13** EXPANDED VIEW/MATERIAL SPECIFI-
CATION
- 15** DIMENSIONS & WEIGHTS
- 19** ENGINEERING DATE



COMPANY PROFILE

SNY Valve (Yancheng) Co., Ltd. is committed to providing global customers with reliable and complete range of solution for engineering valve. Established in 2003 with CNY 150 million registered capital, SNY VALVE is a national high-tech comprehensive enterprise which integrating valve R&D manufacturing and sales. SNY VALVE headquarters is located in Yancheng city with two manufacturing workshops. We have sales centers in Yancheng, Suzhou and Beijing. SNY VALVE covers an area of over 100,000 sq. meters with more than 300 sets of production, test & inspection facilities. SNYVALVE has established long-term cooperative relations with many large enterprises at home and abroad, been approved by many end users and EPC companies, and products export to middle east, Europe, America, etc.

Main Products

SNY VALVE products are widely applied in oil, gas, petroleum refining, petrochemical, power, mining, metallurgy, LNG shipbuilding and other industries. Our product range are NPS 1/4~60 inch (DN6~DN1500), Class150~2500 (PN16~PN420). Our mainly products are gate valves, globe valves, check valves, ball valves, API6D valve, and we are actively developing special valves used for severe service such as cryogenic, ultra-high temperature and high corrosion. Products are designed according to standards of ANSI, ASTM, API, BS, JIS, DIN, GB, ISO, MSS, etc., and design temperature from -196 to 650 Deg.C. Material are available of carbon steel, stainless (including duplex and super duplex), and other alloys steel (low alloy, nickel-based alloy, Inconel, Monel, Hastelloy),etc.

Technical Strength

SNY VALVE has a first-class technology research and development team, and we have nearly 100 of all kinds of patents and copyrights. Company are capable of physical & chemical analysis, mechanical performance testing, NDT, impact test at ambient temperature and low temperature, hardness testing, metallographic analysis, coordinate measuring, valve torque testing, valve life testing, high-temperature & cryogenic testing, etc., products have been certified through fire safe, fugitive emission, TAT tests.



HEADQUARTERS

Established in 2003
Area: 34,000 ㎡
Located in Tinghu District,
Yancheng City.



THE SECOND FACTORY

Established in 2006
Area: 58,000 ㎡
Located in Yancheng E&T
development zone, Yancheng City.



SUZHOU BRANCH

Located in Suzhou Industrial Zone, Suzhou branch is the global sales & marketing center of SNY VALVE, which plays a comprehensive role in market promotion, sales, and set up distribution system.



BEIJING BRANCH

Located in Beijing International Business Center, Beijing branch is the domestic sales & marketing center of SNY VALVE, and plays a comprehensive role in market promotion, sales, and set up distribution system.

Environment, Health & Safety

Quality, health, safety and environment management have top priority in our growth plans and all our endeavors. SNY VALVE is committed to providing a safe, healthy and positive working environment for our employees and those under our care. SNY VALVE has established management policy and action guidelines regarding environmental issues. We view "harmony with nature" and "sustainable development" as integral to the pursuit of our business.

Social Responsibility

Constantly taking social responsibility, SNY VALVE has set up "SNY Scholarship" through cooperating with local university for aiding excellent students in straitened circumstance.

QUALIFICATION & CERTIFICATE

SNY VALVE is committed to provide the highest possible quality industrial valves at the most cost effective way to customers worldwide. We have been certified with ISO9001, ISO14001, OHSAS18001, CE/PED, API6D, API602, API600,ABS, CU-TR,TS,and obtained API607 /API 6Fa fire safe approvals.



QUALITY CONTROL

SNY VALVE has been certified with ISO 9001 & API Spec. Q1 for quality management system. SNY quality assurance and quality control capabilities are followed and implemented based on global standards.

We have

- State-of-the-art Quality Control Test Center
- In-house Non-destructive Test Equipment & ASNT Certified Personnel
- Pressure Test Equipment
- Special Testing Equipment for Product Validation

Raw material quality is ensured by a stringent vendor qualification system. By NDT (Radiographic Test, Magnetic Particle Test, Penetrant Test & Ultrasonic Test), Positive Material Identification (PMI), Tensile Test, and Hardness Test to evaluate samples & small lot production, as well as surveillance audits and sample check to ensure the compliance as per customers' requirements.

Valves manufactured at SNY valves are 100% pressure-tested. The product design has been validated through various special testing as per applicable industry standards such as Fire Safe Test, Low Temperature Test, Cryogenic Test, Vacuum Test, Fugitive Emission Test, High Pressure Gas Test, Elevated Temperature Test and so on.



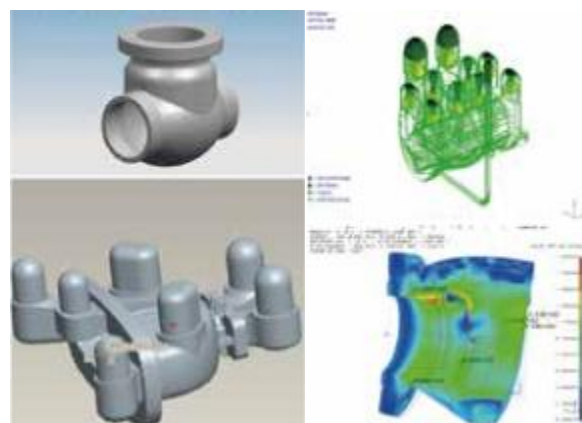


SNY VALVE always focus on technical innovation. It has one province technique center and one cryogenic ball valve engineering center. Technical team utilizes the most advanced computer technology to improve the existing products and develop the new products. Up to now, SNY VALVE possesses more than 90 patents.

SNY VALVE design philosophy is to develop a safe and cost-efficient valve. Through the latest software of 3D, CAD & Solid works, engineer is available to fictitiously check and verify if the parts & valves can be assembled precisely before they are actually made, which can speed up the development process & saves the costs.

SNY VALVE technical personnel are always ready to offer on-line or on-site technical training and support for all of our customers.

TECHNICAL INNOVATION



TECHNOLOGY PATENT



PATENT



FACTORY MANAGEMENT & FACILITIES

SNY VALVE organically integrates the advanced manufacturing equipment and the staffs. By using the most advanced hardware and software, centralizing the production resources, increasing our efficiency and continuously improving the process control, we are able to meet or exceed the different requirement of customers. Company implement 6S management onsite to reduce waste and improve process control. Advanced management software such as K/3 (ERP) & OA (Collaborative Management Software) play an important role in SNY VALVE. Synchronized supervision & management are performed through the whole manufacturing process to improve productivity & efficiency. Our business philosophy is: stable & reliable quality, on-time delivery and reasonable price.

SNY VALVE have more than 300 sets(units) equipment, such as CNC machining Center, CNC lathes, CNC boring-milling machine, general lathes, large-scale vertical lathe, sphere grinders, plasma overlaying welding equipment and heat treatment equipment, etc. CNC machining Center is Japanese FANUC 0I-MD NC, and the three-way coupling is from Germany S+J/R+W, which realizes the automatic continuous milling of plane, groove, bevel, and a variety of linear processing, and ensure the accuracy of ball.



SNY VALVE realizes the casting quality is the most important to valve life, safety of personnel and environment, especially in the high temperature and high pressure applications. So our strict customers always audit the foundries at first from our approved suppliers before order execution.

SNY VALVE has established unique strategic supply chain management system. We have strategically foundries and one own foundry. They each have a full set of quality inspection facilities, such as spectrometer, NDT and PMI inspection, etc.

INTRODUCTION OF FOUNDRIES





INDUSTRY APPLICATIONS

- Oil & Gas Pipeline
- Refinery
- Petrochemical
- Power
- Chemical
- LNG & LPG
- Mining
- Metallurgy
- Aerospace
- Water Treatment
- Offshore Engineering



Figure Numbers

Normal Size A	Valve Type B	Normal Pressure C	End Connection D	Special Requirement E	Body Material F	Trim G	Special Material H
10	CHM	6	R	FN	WCB	T8	NC

Explanation: NPS 10, Metal Seated API6D Check Valve, Class 600, RF Flanged End, No Machining on Raised Face, Body Material WCB, Trim No.8, NACE Requirement.

A Normal Size

2 NPS2	18 NPS18	D50	DN50	D450	DN450
3 NPS3	20 NPS20	D80	DN80	D500	DN500
4 NPS4	22 NPS22	D100	DN100	D550	DN550
5 NPS5	24 NPS24	D125	DN100	D600	DN600
6 NPS6	26 NPS26	D150	DN150	D650	DN650
8 NPS8	28 NPS28	D200	DN200	D700	DN700
10 NPS10	30 NPS30	D250	DN250	D750	DN750
12 NPS12	32 NPS32	D300	DN300	D800	DN800
14 NPS14	34 NPS34	D350	DN350	D850	DN850
16 NPS16	36 NPS36	D400	DN400	D900	DN900

C Normal Pressure

0	Class125	-2.5	PN(DIN)2.5	-20	PN(ANSI)20
1	Class150	-6	PN(DIN)6	-50	PN(ANSI)50
3	Class300	-10	PN(DIN)10	-110	PN(ANSI)110
4	Class400	-16	PN(DIN)16	-150	PN(ANSI)150
6	Class600	-25	PN(DIN)25	-260	PN(ANSI)260
8	Class800	-40	PN(DIN)40	-420	PN(ANSI)420
9	Class900	-63	PN(DIN)63		
15	Class1500	-100	PN(DIN)100		
25	Class2500				

B Valve Type

CH	Soft Seated	API6D Check Valve
CHM	Metal Seated	API6D Check Valve

F Body Material

WCA	A216 WCA
WCB	A216 WCB
WCC	A216 WCC
LCB	A352 LCB
LCC	A352 LCC
CF8	A351 CF8
CF8M	A351 CF8M
CF3	A351 CF3
CF3M	A351 CF3M

D End Connection

R RF Flanged	B** Butt-welding(** is the pipe nominal size or can be described as OD*Wall Thickness)
J RTJ Flanged	F FF Flanged

E Special Requirement

B16.47B	ASME B16.47B standard end flange
CE	valves exported to EU, and shall be CE marked.
CH	Closure(gate/wedge/disc) member with pressure relief hole
FN	No machining on raised face
LN**	non-standard face to face/end to end dimension, ** is the dimension data
SH	SHELL requirement

H Special Material

B7M/2HM	bolt&nut material is B7M/2HM
BZ	galvanized bolt
BN	nickelplated bolt&nut
BP	PTFE plated bolt
NC	NACE Requirement

G Trim

In accordance with API 600. O-ring for soft seated check valve is default. Other materials are available upon request.

DESIGN FEATURES

General Features

- Full-port piggable
- In-line repairable
- Optional drain valve
- Support leg on NPS 4 and larger
- Lifting eye bolts on NPS 4 and larger
- Suitable for horizontal and vertical (flow-up) installation. Technical evaluation required for vertical installation.
- Optional slow closing device

Seat Design Features

Soft sealed

- Soft Seated
- Double seals (soft+HF)
- Replaceable seat ring/o-ring
- Optional thread seat
- Internal hinge pin to minimize external leakage and ensure reliability in service

Metal Sealed

- Metal Seated
- Wear-resistant sealing surface
- Quick closure to prevent backflow
- Internal hinge pin to minimize external leakage and ensure reliability in service.

Cover Features

- Independent dual cover seals (non-pressure seal design)

Optional Features

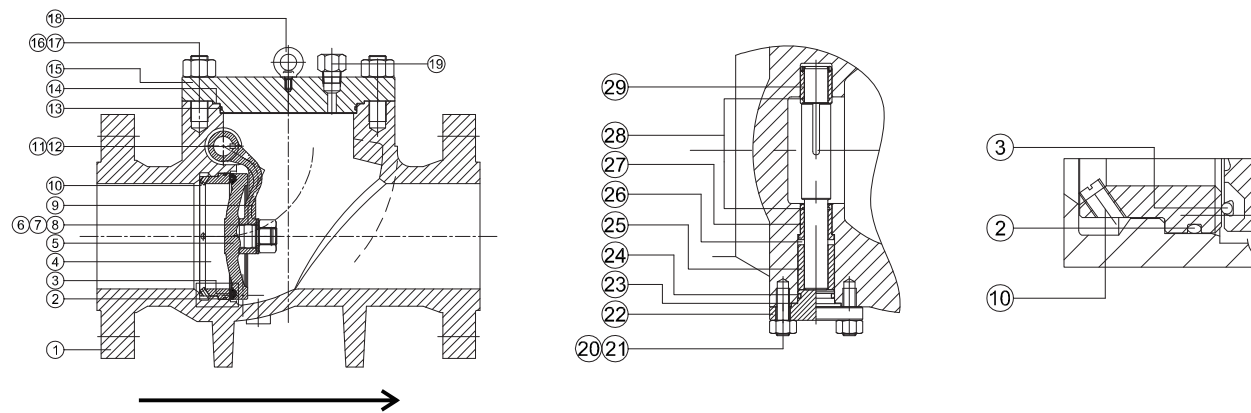
- Drain plug
- Outside mounted weight or dashpot

Design Standards

Basic Design	API 6D
Face to Face/End to End	ASME B16.10
Flange End	ASME B16.5/ASME B16.47
Butt-welding End	ASME B16.25
Testing	API 6D
Pressure-temperature Rating	ASME B16.34

LEADING TECHNOLOGY SOLUTION
FOR ENGINEERING VALVE

General Assembly Drawing for Soft Seated Valve

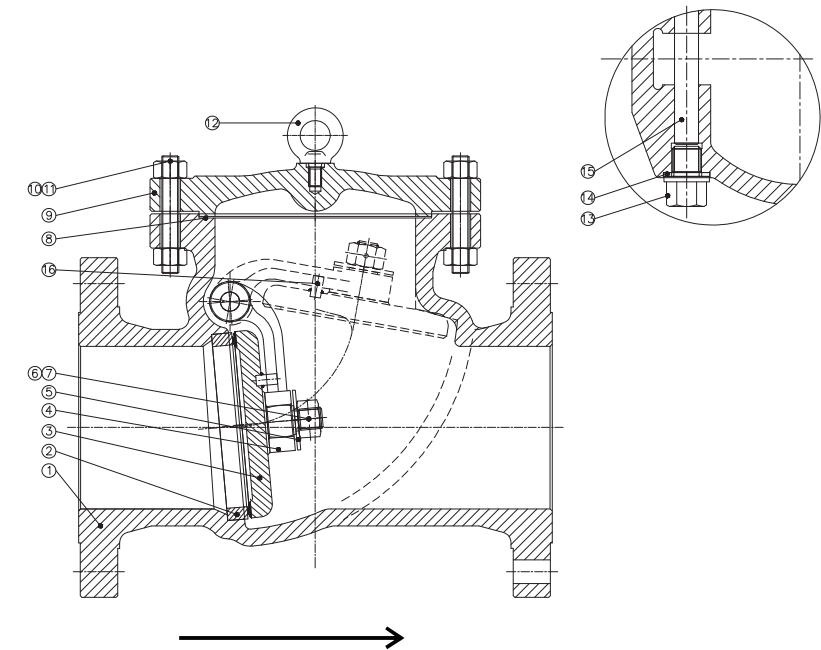


Material of Construction

Part No.	Part Name	Carbon Steel	Low Temperature	Stainless Steel
1	Body	ASTM A216 WCC	ASTM A352 LCC	ASTM A351 CF8M
2	O –Ring	NBR/HNBR/VITON	NBR/HNBR/VITON	NBR/HNBR/VITON
3	O –Ring	NBR/HNBR/VITON	NBR/HNBR/VITON	NBR/HNBR/VITON
4	Seat	ASTM A182 F6a+HF*	ASTM A182 F316+HF*	ASTM A182 F316*HF
5	Disc	ASTM A216 WCC+410	ASTM A352 LCC+316	ASTM A351 CF8M
6	Washer	ASTM A276 410	ASTM A276 316	ASTM A276 316
7	Cotter Pin	ASTM A276 316	ASTM A276 316	ASTM A276 316
8	Nut	ASTM A194 2HM	ASTM A194 7M	ASTM A194 8M
9	Rocker Arm	ASTM A216 WCC	ASTM A352 LCC	ASTM A351 CF8M
10	Screw	ASTM A276 304	ASTM A276 304	ASTM A276 304
11	Key	ASTM A276 316	ASTM A276 316	ASTM A276 316
12	Hinge Pin	ASTM A276 316	ASTM A276 316	ASTM A276 316
13	O –Ring	NBR/HNBR/VITON	NBR/HNBR/VITON	NBR/HNBR/VITON
14	Gasket	SS316+Graphite	SS316+Graphite	SS316+Graphite
15	Cover	ASTM A216 WCC	ASTM A352 LCC	ASTM A351 CF8M
16	Nut	ASTM A194 2HM	ASTM A194 7M	ASTM A194 8M
17	Stud	ASTM A193 B7M	ASTM A193 L7M	ASTM A193 B8M
18	Lifting Eyebolt	Carbon Steel	Carbon Steel	Carbon Steel
19	Plug	SS316	SS316	SS316
20	Nut	ASTM A194 2HM	ASTM A194 7M	ASTM A194 8M
21	Stud	ASTM A193 B7M	ASTM A193 L7M	ASTM A193 B8M
22	Gland	ASTM A105	ASTM A350 LF2	ASTM A276 316
23	Gasket	SS316+Graphite	SS316+Graphite	SS316+Graphite
24	O –Ring	NBR/HNBR/VITON	NBR/HNBR/VITON	NBR/HNBR/VITON
25	Spacer	ASTM A276 316	ASTM A276 316	ASTM A276 316
26	Packing	Graphite	Graphite	Graphite
27	Washer	Nitronic 60	Nitronic 60	Nitronic 60
28	Packing	Graphite	Graphite	Graphite
29	Bushing	Nitronic 60	Nitronic 60	Nitronic 60

HF: Hard-faced with stellite 6 or equivalent.

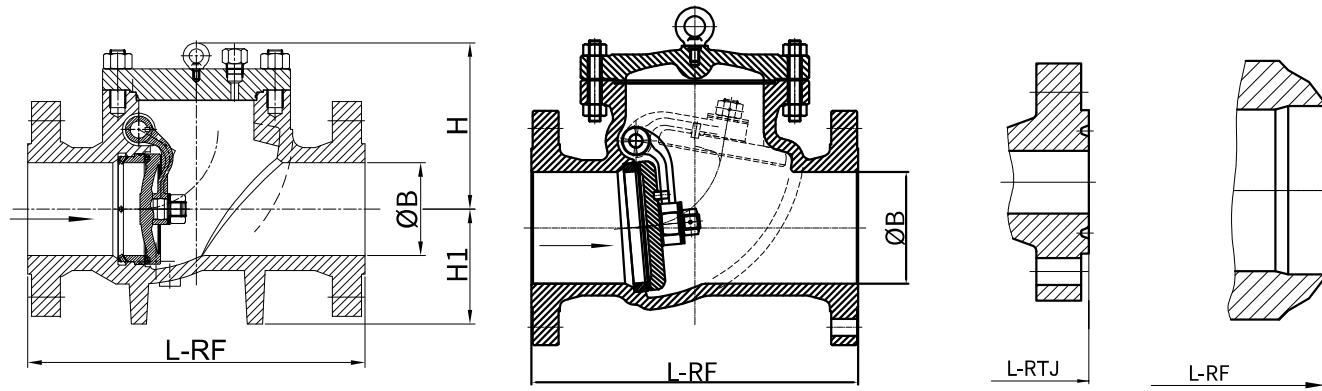
General Assembly Drawing for Metal Seated Valve



Material of Construction

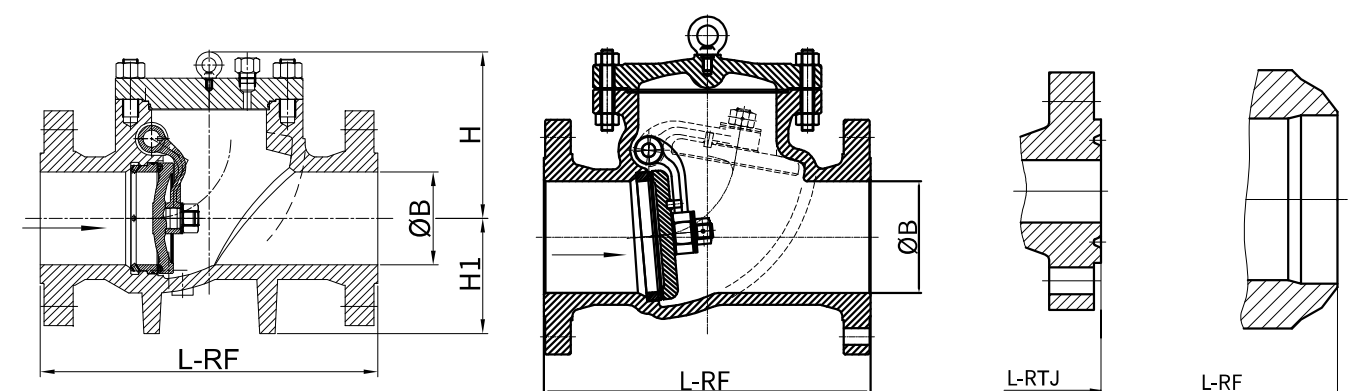
Part No.	Part Name	Carbon Steel	Low Temperature	Stainless Steel
1	Body	ASTM A216 WCC	ASTM A352 LCC	ASTM A351 CF8M
2	Seat	ASTM A105+HF *	ASTM A350 LF2+HF *	ASTM A182 F316+HF
3	Disc	ASTM A216 WCC+410	ASTM A352 LCC+316	ASTM A351 CF8M
4	Rocker Arm	ASTM A216 WCC	ASTM A352 LCC	ASTM A351 CF8M
5	Washer	ASTM A276 410	ASTM A276 316	ASTM A276 316
6	Cotter Pin	ASTM A276 316	ASTM A276 316	ASTM A276 316
7	Nut	ASTM A194 2HM	ASTM A194 7M	ASTM A194 8M
8	Gasket	SS316+Graphite	SS316+Graphite	SS316+Graphite
9	Cover	ASTM A216 WCC	ASTM A352 LCC	ASTM A351 CF8M
10	Nut	ASTM A194 2HM	ASTM A194 7M	ASTM A194 8M
11	Stud	ASTM A193 B7M	ASTM A193 L7M	ASTM A193 B8M
12	Lifting Eye Bolt	Carbon Steel	Carbon Steel	Carbon Steel
13	Plug	SS316	SS316	SS316
14	Washer	ASTM A276 410	ASTM A276 316	ASTM A276 316
15	Hinge Pin	ASTM A276 316	ASTM A276 316	ASTM A276 316
16	Anti-rotation Pin	ASTM A105	ASTM A350 LF2	ASTM A276 316

* HF: Hard-faced with stellite 6 or equivalent.



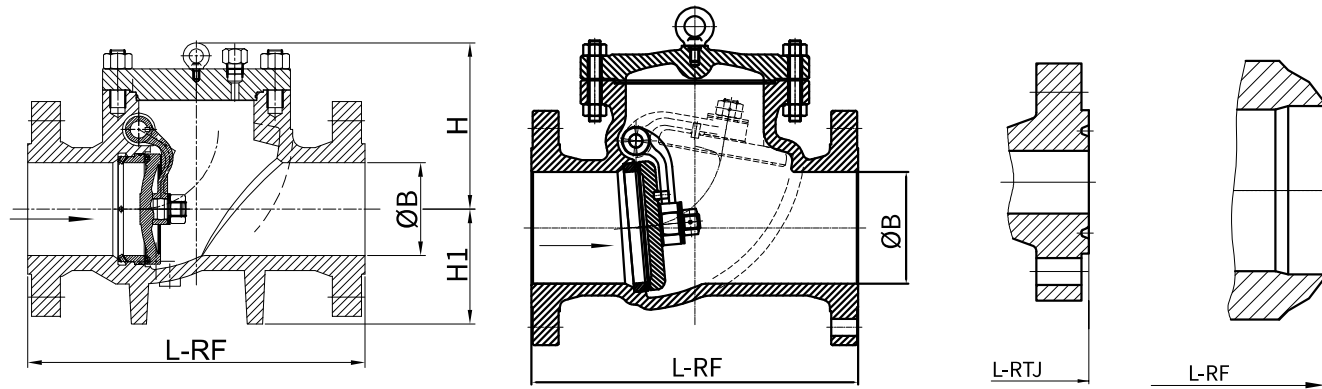
CLASS 150

Size		B		L-RF/BW		L-RTJ		H		H1		Approx Weight	
NPS	DN	mm	in	mm	in	mm	in	mm	in	mm	in	kg	lb
2	50	49	1.94	203	8.00	216	8.50	150	5.90	80	3.20	21	46
3	75	74	2.94	241	9.50	254	10.00	175	6.90	100	3.90	30	66
4	100	100	3.94	292	11.50	305	12.00	200	7.90	120	4.70	52	115
6	150	150	5.94	356	14.00	368	14.50	250	9.80	145	5.70	80	176
8	200	201	7.94	495	19.50	508	20.00	360	14.20	180	7.10	132	291
10	250	252	9.94	622	24.50	635	25.00	415	16.30	210	8.30	210	463
12	300	303	11.94	699	27.50	711	28.00	470	18.50	250	9.80	320	706
14	350	334	13.19	787	31.00	800	31.50	545	21.50	275	10.80	400	882
16	400	385	15.19	864	34.00	876	34.50	575	22.60	305	12.00	630	1389
18	450	436	17.19	978	38.50	991	39.00	605	23.80	325	12.80	850	1874
20	500	487	19.19	978	38.50	991	39.00	625	24.60	360	14.20	930	2051
24	600	589	23.19	1295	51.00	1308	51.50	745	29.30	430	16.90	1230	2712
26	650	633	24.94	1295	51.00	-	-	830	32.70	460	18.10	-	-
28	700	684	26.94	1448	57.00	-	-	900	35.40	500	19.70	-	-
30	750	735	28.94	1524	60.00	-	-	930	36.60	525	20.70	-	-
32	800	779	30.69	1524	60.00	-	-	980	38.60	580	22.80	-	-
36	900	874	34.44	1956	77.00	-	-	1120	44.10	635	25.00	-	-
40	1000	976	38.44	-	-	-	-	-	-	-	-	-	-
42	1050	1020	40.19	-	-	-	-	-	-	-	-	-	-
48	1200	1166	45.94	-	-	-	-	-	-	-	-	-	-



CLASS 300

Size		B		L-RF/BW		L-RTJ		H		H1		Approx Weight	
NPS	DN	mm	in	mm	in	mm	in	mm	in	mm	in	kg	lb
2	50	49	1.94	267	10.50	283	11.13	150	5.90	90	3.50	25	55
3	80	74	2.94	318	12.50	333	13.13	175	6.90	110	4.30	36	79
4	100	100	3.94	356	14.00	371	14.63	200	7.90	140	5.50	56	124
6	150	150	5.94	445	17.50	460	18.13	250	9.80	170	6.70	88	194
8	200	201	7.94	553	21.00	549	21.63	360	14.20	190	7.50	145	320
10	250	252	9.94	622	24.50	638	25.13	415	16.30	235	9.30	226	498
12	300	303	11.94	711	28.00	727	28.63	470	18.50	275	10.80	350	772
14	350	334	13.19	838	33.00	854	33.63	550	26.60	300	11.80	420	926
16	400	385	15.19	864	34.00	879	34.63	580	22.80	340	13.40	665	1466
18	450	436	17.19	978	38.50	994	39.13	620	24.40	365	14.40	900	1985
20	500	487	19.19	1016	40.00	1035	40.75	650	25.60	400	15.70	1050	2315
24	600	589	23.19	1346	53.00	1368	53.88	780	30.70	475	18.70	1560	3440
26	650	633	24.94	1346	53.00	1372	54.00	850	33.50	525	20.70	1880	4145
28	700	684	26.94	1499	59.00	1524	60.00	930	36.60	560	22.00	2050	4520
30	750	735	28.94	1594	62.75	1619	63.75	950	37.40	600	23.60	2350	5182
32	800	779	30.69	-	-	-	-	1080	42.50	650	25.60	2550	5623
36	900	874	34.44	2083	82.00	2112	83.13	1260	49.60	670	26.40	2860	6306
40	1000	976	38.44	-	-	-	-	-	-	-	-	-	-
42	1050	1020	40.19	-	-	-	-	-	-	-	-	-	-
48	1200	1166	45.94	-	-	-	-	-	-	-	-	-	-

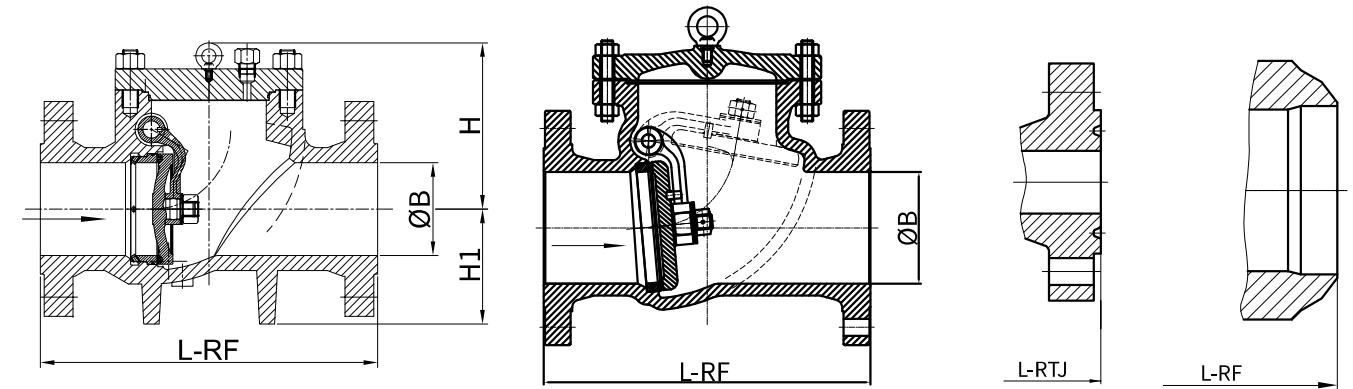


CLASS 600

口径		B		L-RF/BW		L-RTJ		H		H1		Approx Weight	
NPS	DN	mm	in	mm	in	mm	in	mm	in	mm	in	kg	lb
2	50	49	1.94	292	11.50	295	11.63	220	8.70	92	3.60	35	77
3	80	74	2.94	356	14.00	359	14.13	270	10.60	114	4.50	55	121
4	100	100	3.94	432	17.00	435	17.13	285	11.20	150	5.90	90	199
6	150	150	5.94	559	22.00	562	22.13	340	13.40	191	7.50	150	331
8	200	201	7.94	660	26.00	664	26.13	480	18.90	230	9.10	285	628
10	250	252	9.94	787	31.11	791	31.13	550	21.70	280	11.00	470	1036
12	300	303	11.94	838	33.00	841	33.13	620	24.40	300	11.80	600	1323
14	350	334	13.19	889	35.00	892	35.13	650	25.60	320	12.60	640	1411
16	400	385	15.19	991	39.00	994	39.13	725	28.50	356	14.00	900	1985
18	450	436	17.19	1092	43.00	1095	43.13	820	32.30	390	15.40	1170	2580
20	500	487	19.19	1194	47.00	1200	47.25	840	33.10	430	16.90	1320	2911
24	600	589	23.19	1394	55.00	1407	55.38	850	33.50	485	19.10	2360	5204
26	650	633	24.94	1448	57.00	1461	57.50	960	37.80	560	22.00	-	-
28	700	684	26.94	1600	63.00	1613	63.50	1025	40.40	600	23.60	-	-
30	750	735	28.94	1651	65.00	1664	65.50	1100	43.30	630	24.80	4335	9559
32	800	779	30.69	1778	70.00	1794	70.63	1145	45.10	650	25.60	-	-
36	900	874	34.44	2083	82.00	2099	82.63	1260	49.60	720	28.30	-	-

CLASS 900

口径		B		L-RF/BW		L-RTJ		H		H1		Approx Weight	
NPS	DN	mm	in	mm	in	mm	in	mm	in	mm	in	kg	lb
2	50	49	1.94	368	14.50	371	14.63	240	9.40	120	4.70	65	143
3	80	74	2.94	381	15.00	384	15.13	270	10.60	130	5.10	82	181
4	100	100	3.94	457	18.00	460	18.13	330	13.00	160	6.30	130	187
6	150	150	5.94	610	24.00	613	24.13	430	16.90	210	8.30	250	551
8	200	201	7.94	737	29.00	740	29.13	500	19.70	260	10.20	475	1047
10	250	252	9.94	838	33.00	841	33.13	580	22.80	290	11.40	600	1323
12	300	303	11.94	965	38.00	968	38.13	620	24.40	320	12.60	850	1874
14	350	322	12.69	1029	40.50	1038	40.88	670	26.40	345	13.60	1560	3440
16	400	373	14.69	1130	44.50	1140	44.88	700	27.60	365	14.40	1805	3980
18	450	423	16.69	1219	48.00	1232	48.50	760	29.90	400	15.70	2100	4631
20	500	471	18.56	1321	52.00	1334	52.50	830	32.7	450	17.70	-	-
24	600	570	22.44	1549	61.00	1568	61.75	1060	41.70	560	22.00	-	-



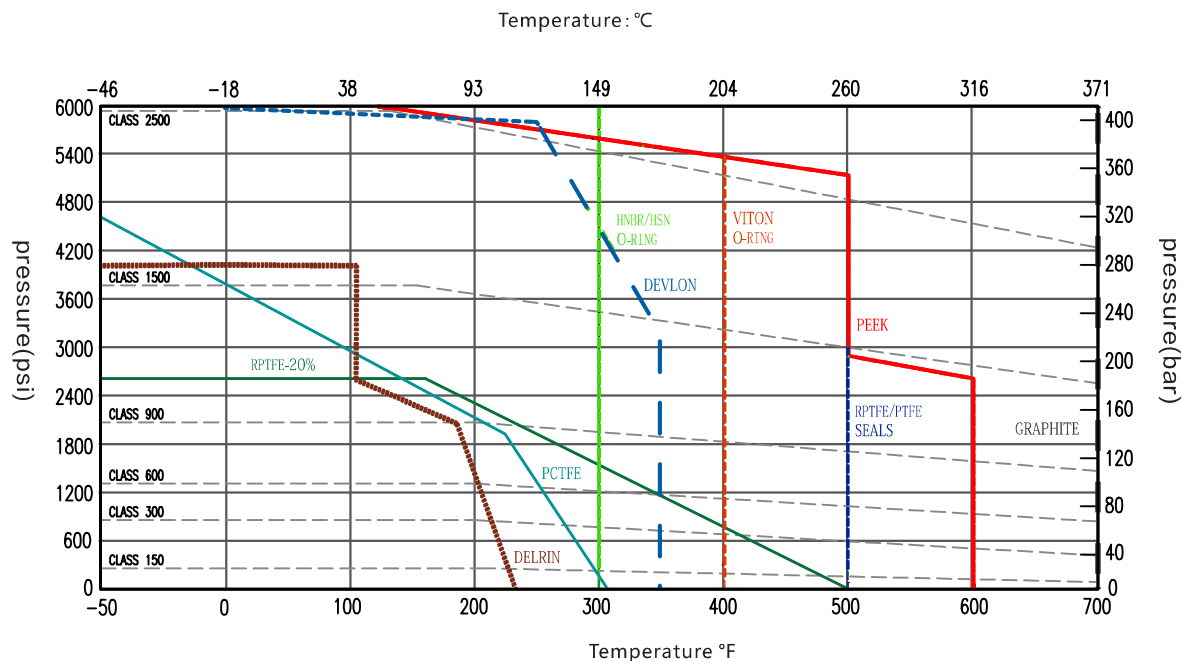
CLASS 1500

口径		B		L-RF/BW		L-RTJ		H		H1		Approx Weight	
NPS	DN	mm	in	mm	in	mm	in	mm	in	mm	in	kg	lb
2	50	49	1.94	368	14.50	371	14.63	240	9.40	120	4.70	65	143
3	80	74	2.94	470	18.50	473	18.63	320	12.60	145	5.70	120	265
4	100	100	3.94	546	21.50	549	21.63	400	15.70	180	7.10	210	463
6	150	144	5.69	705	27.75	711	28.00	460	18.10	215	8.50	320	706
8	200	192	7.56	832	32.75	841	33.13	600	23.60	270	10.60	810	1786
10	250	239	9.44	991	39.00	1000	39.38	635	25.00	310	12.20	930	2051
12	300	287	11.31	1130	44.50	1146	45.13	725	28.50	360	14.20	1250	2756
14	350	315	12.44	1257	49.50	1276	50.25	760	29.90	400	15.70	1430	3153
16	400	360	14.19	1384	54.50	1407	55.38	820	32.30	450	17.70	-	-
18	450	406	16.00	1537	60.50	1559	61.38	930	36.60	500	19.70	-	-
20	500	454	17.88	1664	65.50	1686	66.38	930	37.80	520	20.50	-	-
24	600	546	21.50	1943	76.50	1972	77.63	1130	44.50	610	24.00	-	-

CLASS 2500

口径		B		L-RF/BW		L-RTJ		H		H1		Approx Weight	
NPS	DN	mm	in	mm	in	mm	in	mm	in	mm	in	kg	lb
2	50	42	1.69	451	17.75	454	17.88	285	11.20	135	5.30	85	187
3	80	62	2.44	578	22.75	584	23.00	345	13.60	170	6.70	185	408
4	100	87	3.44	673	26.50	683	26.88	430	16.90	200	7.90	365	805
6	150	131	5.19	914	36.00	927	36.50	590	23.20	265	10.40	595	1312
8	200	179	7.06	1022	40.25	1038	40.88	680	26.80	300	11.80	815	1797
10	250	223	8.81	1270	50.00	1292	50.88	740	29.10	365	14.40	1250	2756
12	300	265	10.44	1422	56.00	1445	56.88	960	37.80	410	16.10	1480	3263

Reference Pressure/Temperature Chart



The above chart is for reference only. Please refer to ASME B16.34 for the specific body pressure / temperature rating. Please contact us for specific or additional seat and seal information if required.

CV Value

NPS	CLASS 150	CLASS 300	CLASS 600	CLASS 900	CLASS 1500	CLASS 2500
2	91	91	76	65	60	48
3	211	211	176	151	139	111
4	380	380	317	272	251	201
5	571	571	476	408	377	301
6	845	854	704	604	557	446
8	1507	1507	1256	1077	993	795
10	2360	2360	1967	1686	1555	1244
12	3403	3403	2836	2431	2242	1794

Notes:
 1. Larger size data available on request.
 2. Flow coefficient Cv is the volume of water in U.S. gallons at 5°C~ 40°C per minute that passes through a valve at a pressure drop of 1 Psi. $Cv = \frac{Q}{\sqrt{\Delta P}}$ is typically calculated from the following formula with unit of gal/min.
 $Cv = \frac{Q}{\sqrt{\Delta P}}$
 where
 Q = flow rate in cubic metres per hour
 G = specific gravity of liquid (water=1)
 ΔP = pressure drop across valve in bar

Note: Due to quick development of products, the data in our catalogue may be updated. SNY reserves the right to change the design, material or specifications without prior notice and free of obligation to furnish or install such changes on products previously sold.

PRODUCT WARRANTY

SNY offer the product warranty within 18 months from the date of shipment or 12 months after installation, whichever occurs first.