

Installation instructions

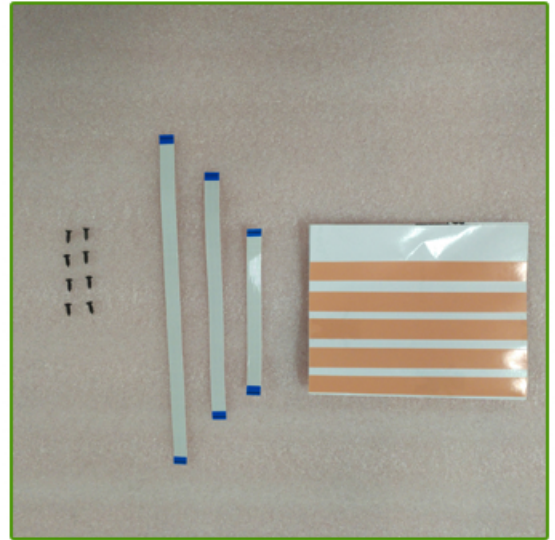
(TTN Series Touch Frame)

V1.0





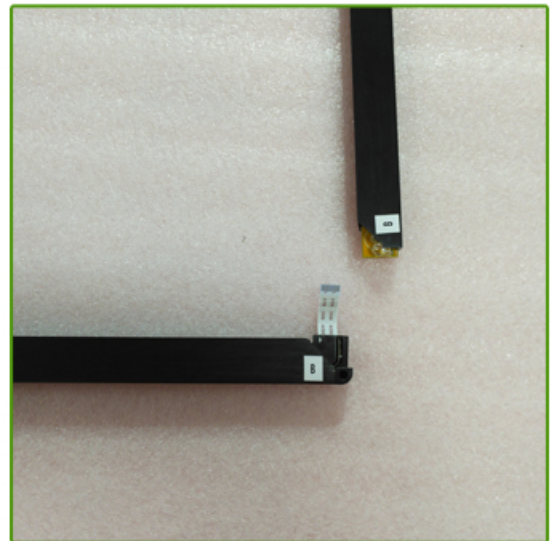
1.After you opening the packaging, there are 4 touch frames in total.We have posted a note on the back of each touch frame.



2.We provide some accessories, which can be used when you are assembling.



3.Please assemble the touch frame in letter order (the letter is noted on the back of touch frame). Their sequence is A-A , B-B , C-C , D-D.



4.Please assemble the touch frame in letter order (the letter is noted on the back of touch frame). Their sequence is A-A , B-B , C-C , D-D.



5.As shown in Figure , the C-C corner needs no connecting data line.



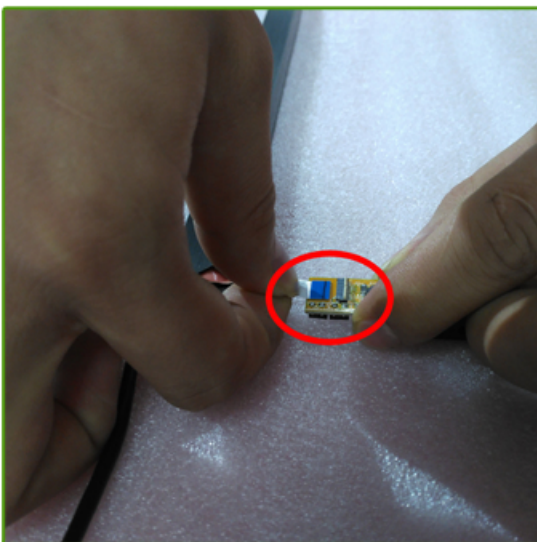
6.Please assemble the touch frame in letter order (the letter is noted on the back of touch frame). Their sequence is A-A , B-B , C-C , D-D.



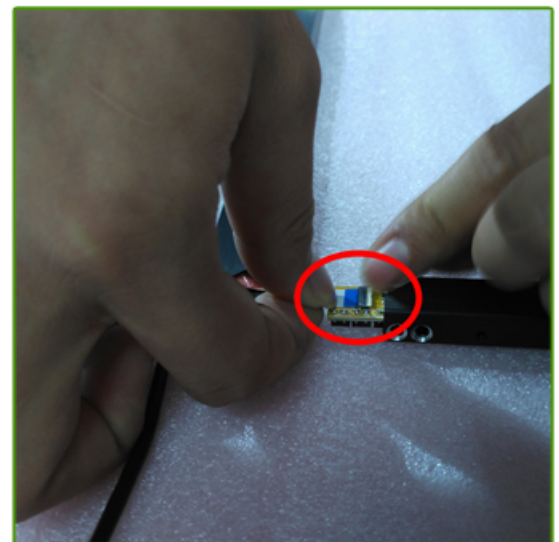
7.Firstly,mount A-A, pay attention to mount the touch frame face up, take out a piece of PCBA.



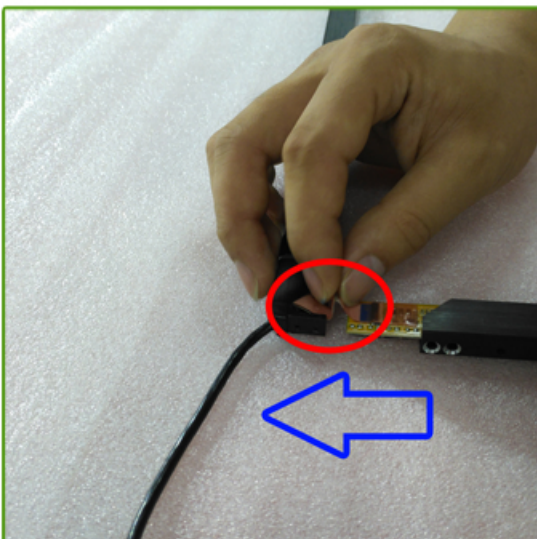
8.As shown in Figure, the buckle of card connector must be standing up, otherwise the touch frame will not be able to insert the FFC cable.



9.Aim FFC cable at the entrance to the connector, plug in gently.



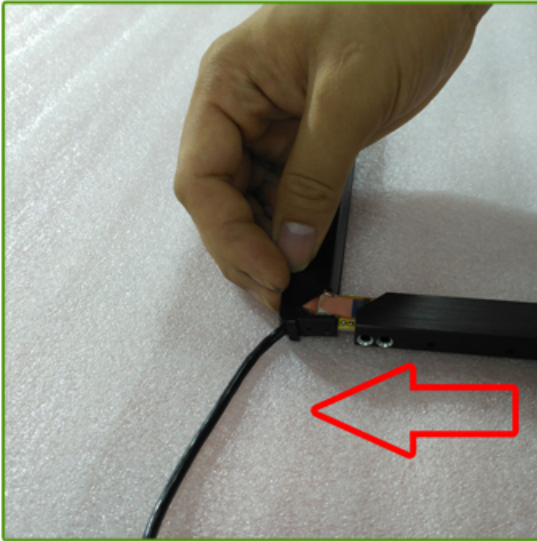
10.When the black lines of FFC cable is almost level with connector, press the buckle of the connector.



11.Stick the red tape on the FFC cable,then fold the FFC cable in half gently.



12.Put the FFC cable which have been folded into the groove of the corner piece gently.



13.To hold the touch frame in place by one hand, then push another touch frame through it gently.



14.Until the whole corner piece has been put into the frame body,be careful not to let the cable out.



15.Tighten the screws.



16.The mounting of A-A has been finished,install B-B,C-C,D-D in turn by above methods.



17.After the installation is complete,there is a note on the back, the data line is in the lower left corner.



18.The front side is without any notes,on this side, the data line is in the lower right corner.