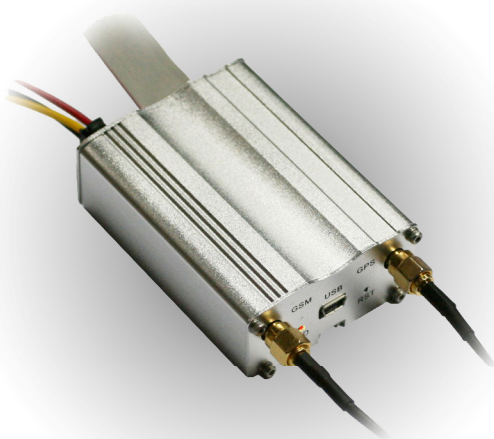


# FX Oncore Titan

## Advanced Asset Tracking Device

**SMALL SIZE, LOW COST,  
ACCURATE, RELIABLE.**



The FX Oncore Titan is an advanced dual-powered vehicle tracking device utilizing integrated GPS, GPRS, and GSM capabilities. This tamper-proof application environment is designed for low cost, accurate and reliable vehicle management support of which requires speedy installation and implementation.

Supporting GSM Euro-band 900/1800MHz and 900/1800/1900MHz, this device transmits GPS data on event or demand via the GSM Network utilizing fail over SMS or GPRS communication. This system is suitable for applications where location acquirement, tracking and important asset information of remote objects is required.

### Location Services

- GPS Tracking
- Mapping
- Immobilization
- Geofencing

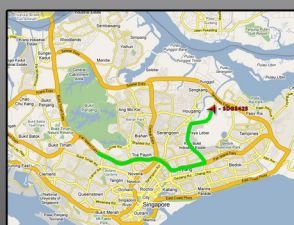
### Hardware Features

- 85.0 x 53.3 x 25.6 mm
- SiRF Powered 12 Channel Receiver
- Triband (900/1800MHz/1900MHz)
- ARM 32 bit Microprocessor
- Standby Rechargeable Battery\*
- USB, ADC, GPI, GPO, USART \*
- Internal Memory \*

### Telemetry Services

- Ignition On/Off
- Vibration Alert
- Power Cut Alert
- Antenna Cut Alert
- Exceed Speed Limit Alert
- Exceed Acceleration Alert
- Exceed Deceleration Alert
- Jerky Motion Alert
- Overturned Motion Alert
- Advanced Reports

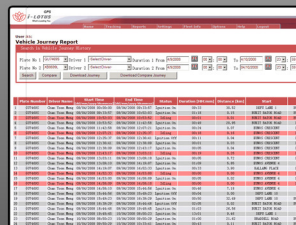
\* See reverse for details



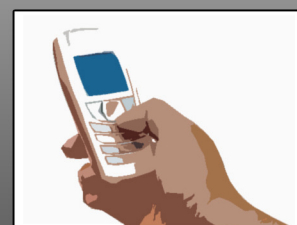
Live Tracking



Geofencing



Detailed Reports



Live Alerts

E-Mail : [sales@ilotus.com.sg](mailto:sales@ilotus.com.sg)

Visit Us At : [www.ilotus.com.sg](http://www.ilotus.com.sg)

For additional information visit our website above or contact i-Lotus at the following:

**i-Lotus Corporation Pte Ltd**  
No. 51 Bukit Batok Crescent #03-04,  
Unity Center Singapore 658077  
Office : +65 6316 2237  
Fax : +65 6316 2235  
E-Mail : [sales@ilotus.com.sg](mailto:sales@ilotus.com.sg)  
Website: [www.ilotus.com.sg](http://www.ilotus.com.sg)



ISO 9001 : 2000 Cert.No. : 2268



## TECHNICAL SPECIFICATIONS

General Characteristics	Receiver Architecture	Tracking L1, C/A Code
	Channels	12
	Correlators	32,768
	Frequency	1575.42MHz
	Dimensions	85.0 x 53.3 x 25.6 mm
	GSM / GPRS Frequency Range	Triband (900MHz / 1800MHz / 1900MHz)
	Interface Ports	6 x ADCs, 8 x GPIs, 6 x GPOs, 1 x USART port
Internal Memory	1Mb external flash - 128Kb for data logging	
Performance Characteristics	Sensitivity	Aquisition (Assisted) -150 dBm
		Aquisition (Autonomous) -142 dBm
		Tracking -151 dBm
	TTFF(Time To First Fix)	Cold Start <45 sec
		Warm Start <38 sec
		Hot Start <5 sec
Accuracy	Horizontal Position <5 m	
	Velocity <1m/s	
	Heading <0.1°	
Environmental Characteristics	Operating Temperature	-20° C to +55° C
Electrical Characteristics	Power Supply Voltage	9VDC - 36VDC
	High Transient Threshold	60VDC
	Power Consumption	Nom:80mA (Full Power Mode)
		8.6mA (Sleep Mode)
Battery Life	96 hrs (Approx)	
GSM/GPRS Module Specifications	Protocol Stack	GSM Rel.97. STK Rel.99 GPRS Rel4.0 Class 10, Class B
	GPRS Coding Scheme	CS-1, CS-2, CS-3, CS-4
	GPRS Data Downlink Transfer	Max 85.6 kbps
	GPRS Data Uplink Transfer	Max 42.8 kbps
Accessories	Power Cable	Yes
	GPIO Cable	Yes
	GPS Antenna	Optional
	GSM Antenna	Optional

E-Mail: [sales@ilotus.com.sg](mailto:sales@ilotus.com.sg)

Website: [www.ilotus.com.sg](http://www.ilotus.com.sg)

For additional information visit our website above or contact i-Lotus at the following:

**i-Lotus Corporation Pte Ltd**  
 No. 51 Bukit Batok Crescent #03-04,  
 Unity Center Singapore 658077  
 Office : +65 6316 2237  
 Fax : +65 6316 2235  
 E-Mail : [sales@ilotus.com.sg](mailto:sales@ilotus.com.sg)  
 Website : [www.ilotus.com.sg](http://www.ilotus.com.sg)



ISO 9001 : 2000 Cert.No. : 2268

