



# 钢带机断带检测装置使用说明书

## Belt machine belt breaking detecting device operating manual

(适用于FAXI专供12芯钢带)

(Suitable for FAXI exclusive supply of 12 cores belt)

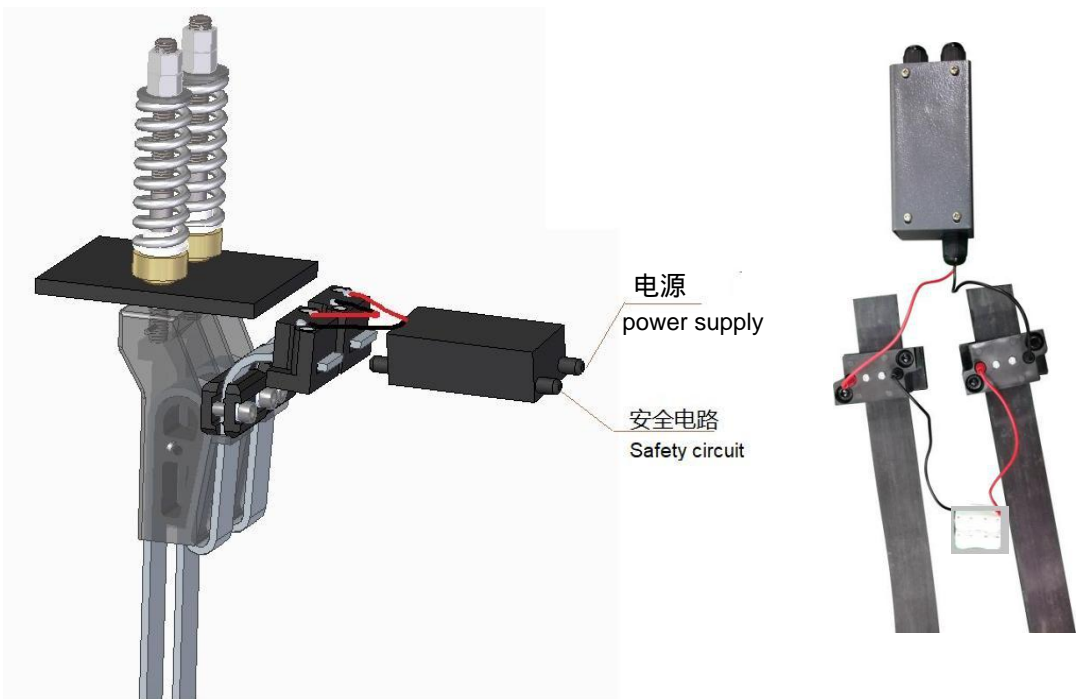
短路端刀头安装示意图

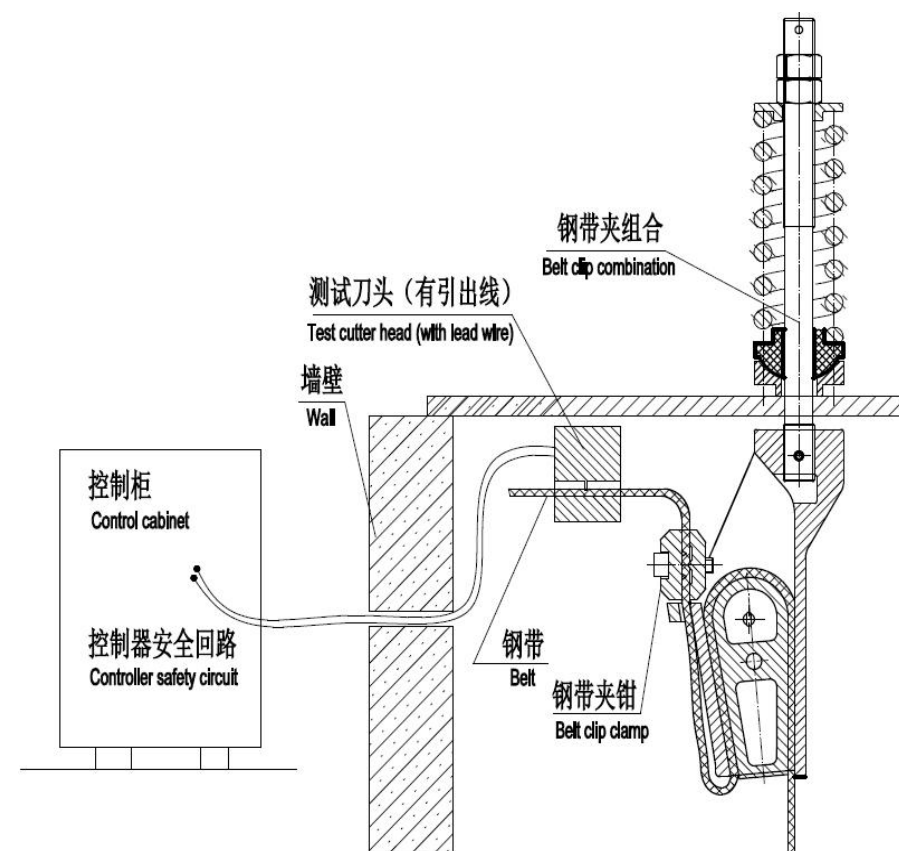
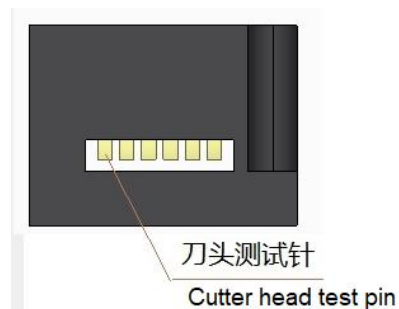
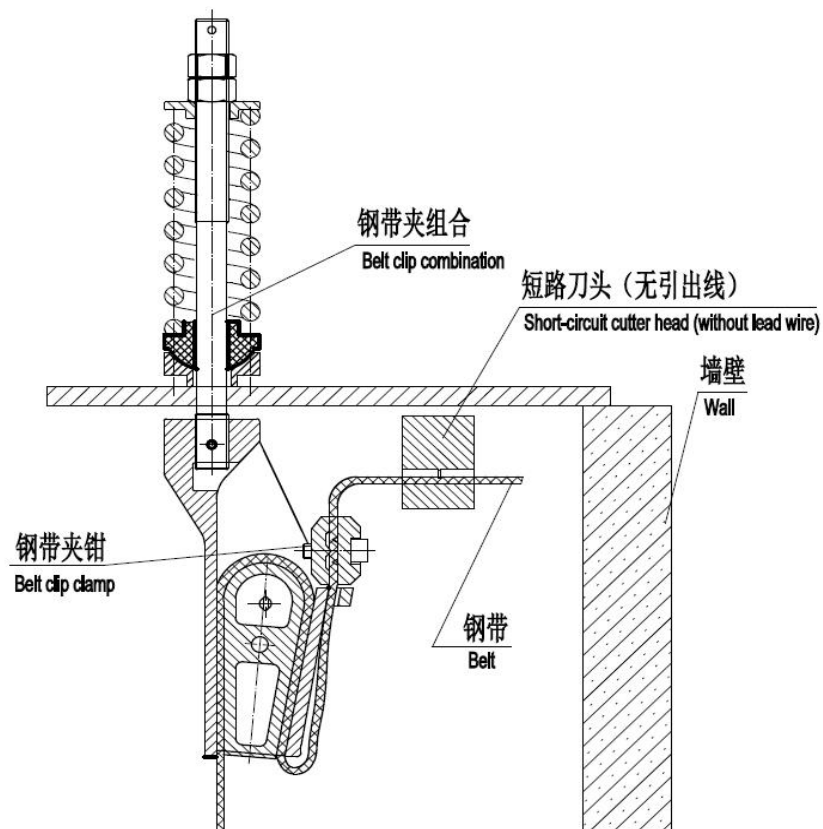
Installation diagram of short-circuit end cutter head



测试端刀头安装示意图

Installation diagram of test end cutter head

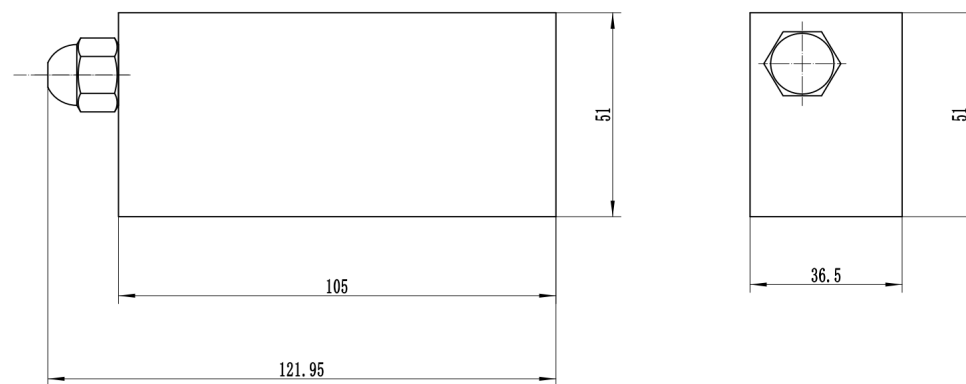




## 检测仪外形尺寸

### 端子接线说明：

- 1、2号脚----接电源电压；
- 5、6号脚----接测试刀头串联线；
- 3、4号脚----串接于控制柜安全回路。



检测仪盒电源电压可分两种，AC220V与DC24V。安装前请务必确认电源电压！！！！

The power supply voltage of the detector box can be divided into two kinds, AC220V and DC24V. Please confirm the power supply voltage before installation!!

①松开短路刀头上的M6x30内六角螺钉；

Loosen the M6x30 inner hexagon screw on the short-circuit cutter head;

②将钢带穿入短路刀头，钢带一端边缘与塑胶件齐平即可；

Insert the belt into the short-circuit cutter head, and the edge of one end of the belt is flush with the plastic part;

③拧紧M6x30内六角螺钉；

Tighten the M6x30 inner hexagon screw;

④重复步骤①、②、③将剩余的钢带与短路端刀头安装好（各短路端刀头接在相应钢带的同一端）；

Repeat the steps①、②、③ to install the remaining belt and the short-circuit end cutter head (each short-circuit end cutter head is connected to the same end of the corresponding belt);

⑤重复步骤①、②、③、④将测试端刀头安装好（各测试端端刀头接在相应钢带的同一端，且距离控制柜较近的一端）；

Repeat steps ①, ②, ③, ④ to install the test end cutter head (each test end cutter head is connected to the same end of the corresponding belt, and should be the end closer to the control cabinet);

⑥完成以上步骤后，请用万用表测量各根钢带上测试端刀头的红、黑色引出线是否导通，若不通，请重复步骤③将螺钉拧紧，直到红、黑引出线导通（注意检查刀头测试针是否嵌入钢带内与钢芯接触）；

After completing the above steps, please use a multimeter to measure whether the red and black lead wires of the test end cutter head on each belt are breakover, If not, please repeat step ③ tighten the screws until the red and black lead wires are breakover (pay attention to check whether the cutter head test pin is embedded in the belt to contact the steel core);

⑦将各个测试刀头上相邻的红色引出线与黑色线引出线接入白色端子（靠同一边接线），各个测试刀头串联起来，再次用万用表测量剩下的红、黑色引出线是否导通，如不通，请重复步骤⑥；

Connect the adjacent red lead wires and black lead wires on each test cutter head to the white terminal (need by wiring on the same side), connect each test cutter head in series, and again use a multimeter to measure whether the remaining red and black lead wires are breakover , If it fails, please repeat step ⑥;

⑧将剩下的红色、黑色引出线分别接入接线盒内5、6端子；

Connect the remaining red and black lead wires to terminals 5 and 6 in the junction box respectively;

⑨接线盒内端子1、2接入电源；

Terminals 1 and 2 in the junction box are connected to power supply;

⑩接线盒内3、4端子接入控制柜内安全回路。

Terminals 3 and 4 in the junction box are connected to the safety circuit in the control cabinet.