

ALMATEC®

C-SERIES



Where Innovation Flows

AIR-OPERATED DOUBLE-DIAPHRAGM PUMPS
CONSTRUCTED OF PLASTIC


a **DOVER** company

almatec.de

A Cost-Effective Alternative with ALMATEC Quality

The new ALMATEC C-Series AODD pumps are a cost-effective alternative to plastic pumps for all pumping tasks. The distinctive and proven solid design provides the mass needed for an oscillating pump.

The wetted housing parts are made of either abrasion-resistant polyethylene (PE) or chemically almost universally resistant PTFE. In addition, conductive versions with ATEX conformity according to directive 2014/34/EU are available. The material of the non-wetted center block is polyethylene or PE conductive. The three sizes C 10 (3/8"), C 15 (1/2") and C 25 (1") achieve max. flow rates of 1.3/ 3.1/7 m³/h at a total head up to 7 bar.



Since the suction and discharge ports are available as separate housing parts, in addition to the standard connection, two further connection foot-prints are available to match existing installations.



The housing parts of the C-Series are tightened to each other via housing bolts. However, instead of single bolts pressing punctually against the housing, all housing bolts are tightened together against a diaphragm-sized ring per side. This structure transmits the forces of the housing bolts into the housing parts evenly. A consistent flow of forces and an increased bolt torque are the effect of this construction - ultimately increasing pump safety.



The Almatec air control system PERSWING P® has no dead center and is operating without any lubrication. The one-piece diaphragms used are designed for a long service life. All wear parts are compatible with other ALMATEC pumps.



Good suction head, self-priming and dry run capability as well as the absence of drives, rotating parts and shaft seals are further features.

Stroke counting, diaphragm monitoring and a center block made of PA conductive for higher temperatures are available as accessories.



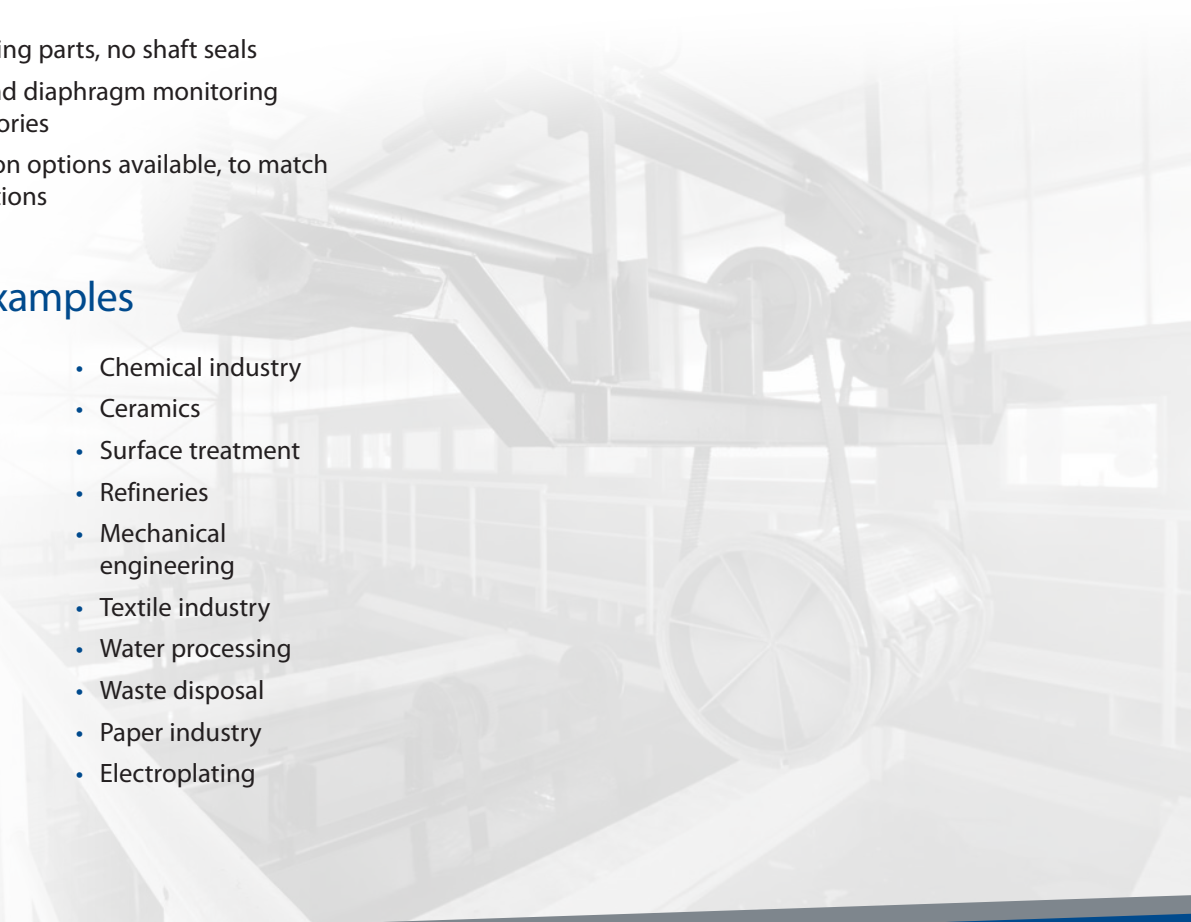
C-Series at a Glance

- Air-operated double-diaphragm pump available in three sizes: C 10 (3/8"), C 15 (1/2") and C 25 (1")
- Reliable ALMATEC solid-design construction
- Manifolds as separate housing parts
- High pump safety due to innovative ring-tightening structure
- Wetted housing materials PE or PTFE, also conductive (ATEX conformity)
- Diaphragms and ball valves made of EPDM and PTFE
- Maintenance and lubrication-free PERSWING P® air control system
- Wear parts compatible with other ALMATEC pumps
- Good suction head, self-priming and dry-run capability
- No drives, no rotating parts, no shaft seals
- Stroke counting and diaphragm monitoring available as accessories
- Different connection options available, to match to existing installations



Application Examples

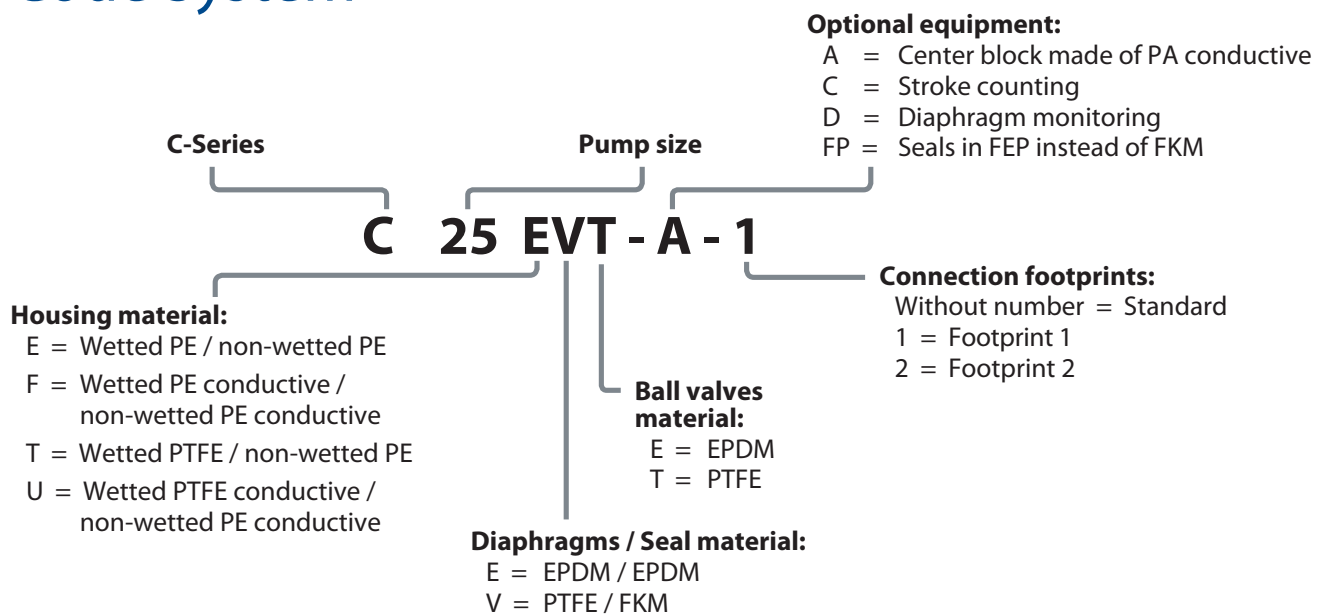
- Sludges
- Acids
- Alkalis
- Solvents
- Slurries
- Emulsions
- Mixtures of liquids and solids
- Resins
- Powders
- Aqueous solutions
- Paints, inks
- Chemical industry
- Ceramics
- Surface treatment
- Refineries
- Mechanical engineering
- Textile industry
- Water processing
- Waste disposal
- Paper industry
- Electroplating



Technical Data

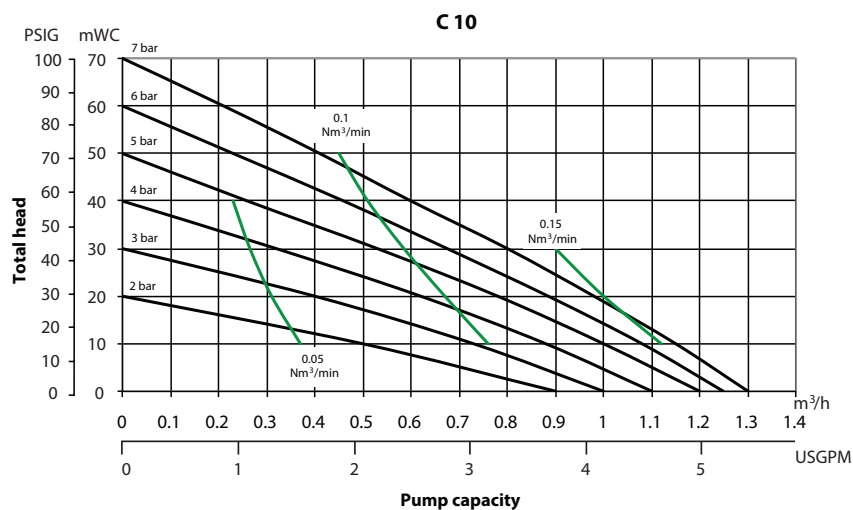
Pump Size		C 10	C 15	C 25
Dimensions – mm (inch):	Length	110 (4.3)	156 (6.1)	206 (8.1)
	Width	155 (6.1)	203 (8.0)	273 (10.8)
	Height	181 (7.1)	253 (10.0)	353 (13.9)
Nominal port size (NPT)		3/8"	1/2"	1"
Air connection (BSP)		1/8"	1/4"	1/4"
Weight – kg (lbs):	PE	2 (4.4)	6 (13.2)	14 (30.9)
	PTFE	4 (8.8)	10 (22.1)	23 (50.7)
Max. particle size of solids – mm (inch)		3 (0.12)	4 (0.16)	6 (0.24)
Suction head, dry – mWC (ftWC)		1 (3.3)	2 (6.6)	3 (9.8)
Suction head, wet – mWC (ftWC)		9 (29.5)	9 (29.5)	9 (29.5)
Max. permissible driving pressure – bar (psig)		7 (100)	7 (100)	7 (100)
Max. permissible operating temperature - °C (°F):				
PE		70 (158)	70 (158)	70 (158)
PTFE (with center block, PE)		80 (176)	80 (176)	80 (176)
PTFE (with center block, PA conductive)		100 (212)	100 (212)	100 (212)

Code System

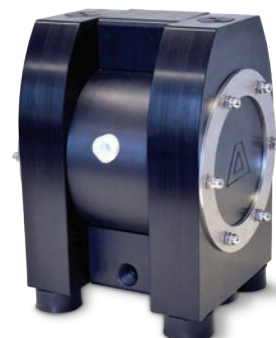
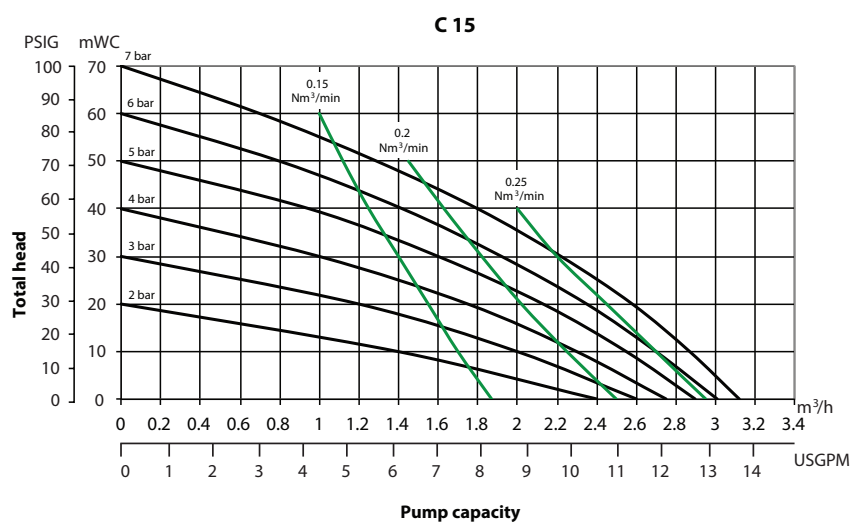


Performance Charts

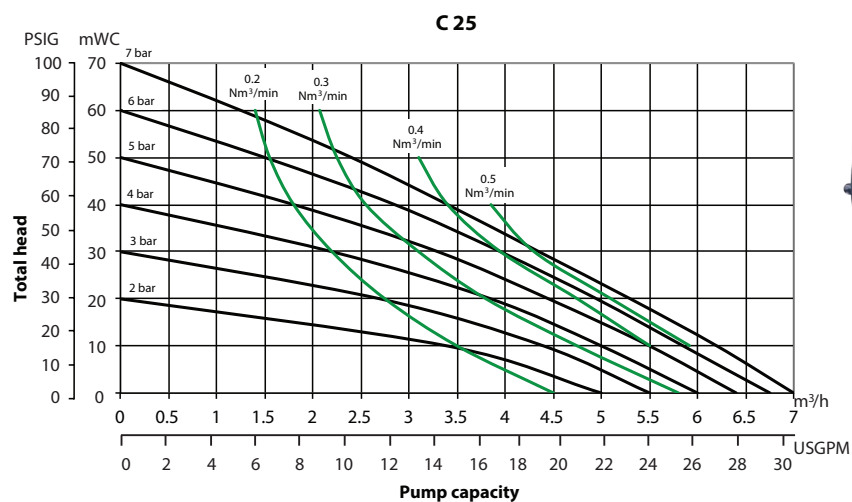
The following data refer to water at 20°C / 68°F (referring to DIN EN ISO 9906)



C 10



C 15



C 25

Where Innovation Flows

ALMATEC®

ALMATEC Maschinenbau GmbH
Hochstraße 150-152
47228 Duisburg, Germany
Tel: +49 (2065) 89205-0
Fax: +49 (2065) 89205-40
info@almatec.de
almatec.de

PSG® reserves the right to modify the information and illustrations contained in this document without prior notice. This is a non-contractual document. 10-2018

Authorized PSG® Partner: