



G Series 7kW Charger EU Standard

⚡ RFID version

User manual

Contents

⚡	Multinational language	01
⚡	Safety Precautions	02
⚡	Packing List	03
⚡	Product Features	04
⚡	Installation Environment Requirements	05
⚡	Installation Process	05
⚡	Operation Instruction	08
⚡	Operation Flow	09
⚡	Troubleshooting	10
⚡	Warranty, Repair & Maintenance	12
⚡	Warranty Disclaimer	12
⚡	Customer Support	12
⚡	Certification	12

Multinational language

ES: Para otros idiomas, escanee el código QR.

PT: Para outras línguas, digitalize o código QR.

TH: ภาษาอื่นๆโปรดสแกนรหัสQR-Code



<https://aossPIC10001.websiteonline.cn/pmo33f007/doc/GMWGseriesofflineRFID.pdf>

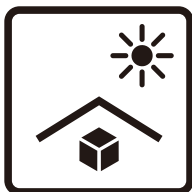
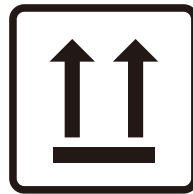
Contact us:

Web: <https://www.zdenenergy.com/>

Mail: service@zdenenergy.com

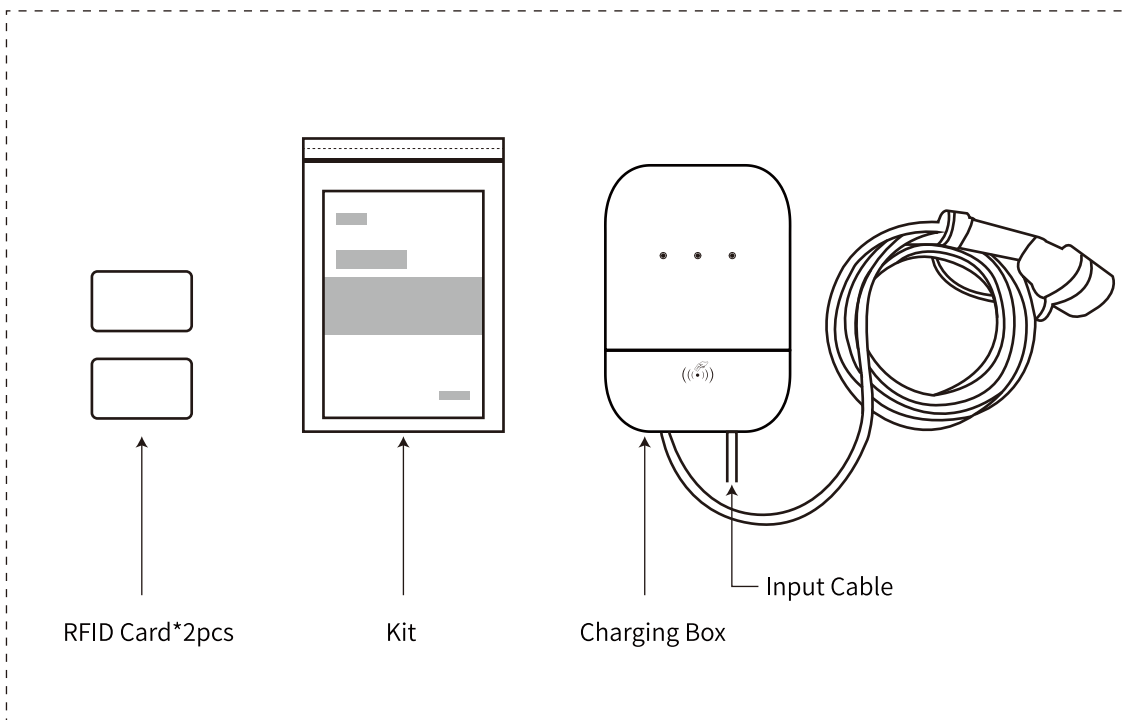
Safety Precaution

1. Carefully read the user manual before installing and using the product.
Ignoring precautions may result in serious injury or damage.
2. Only a qualified electrician should install and maintain the charger.
Untrained individuals should not perform these tasks.
3. Improper installation or repairs can be hazardous and may increase the risk of fire.
4. Improper installation and repair will invalidate the product warranty.
5. Avoid disassembling the product. Improper re-assembly could lead to damage, leaks, and water ingress.
6. Ensure the power supply is disconnected and the switch is off before any installation or maintenance.
7. Do not use the product with any charging adapters or converters.
8. It is required to install with a dedicated Micro Circuit Breaker (MCB) and a Residual Current Device (RCD) for safety.



Packing List

Please check the content inside the box.



Composition of the Kit

User Manual * 1

Quality Certificate * 1

M4 * 6, pan head screw * 2

ST6*60, Hex Flange Screw* 4

Φ8*60, Expansion Tube * 4

Product Features

Specifications	
Model	ZDA4-DC1-C12E/ZDA4-DC1-C11E
Rated Voltage (V)	230V
Rated Current (A)	32A
Maximum Output Power	7kW
Cable Width	3×6mm ²
Frequency (Hz)	50Hz/60Hz
Working Altitude	≤3000m
Charging Mode	Mode 3
Dimension	310×210×90mm (without cable)
Weight	3.5kg
Operating Temperature	-40 °C to 55 °C
Storage Temperature	-40 °C to 85 °C
Certifications	IEC 61851-1, IEC 61851-22, IEC 62196-2
Connector Type (IEC 62196-2)	Type 2
Ingress Protection	IP55/IK10
Residual Current(DC)	6mA
Residual Current(AC)	30mA
Start/Stop Method	Authenticated by RFID card, swipe the card to start and stop charging.

Installation Environment Requirements

The charger installation environment should meet the following conditions:

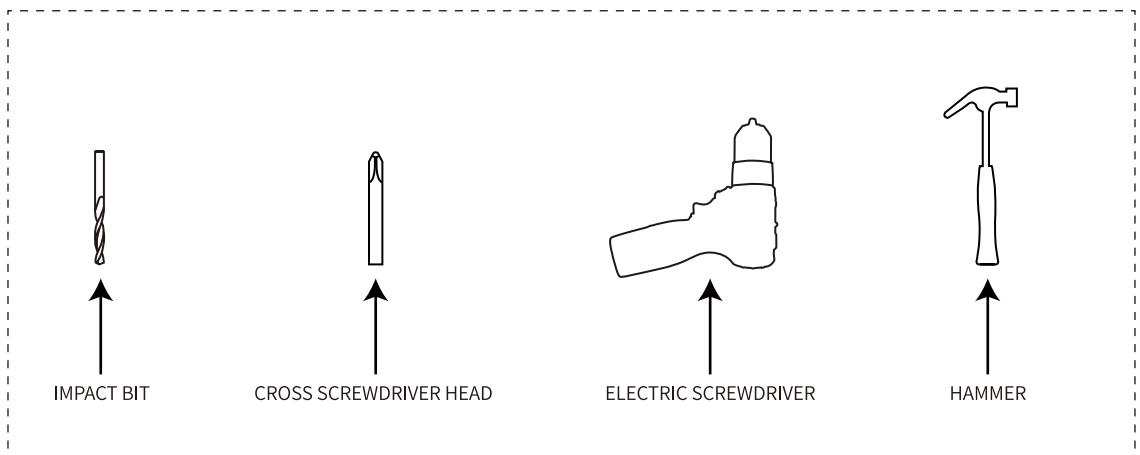
1. A location that offers a suitable cable length for easy charging access.
2. At least 1.3 meters above the ground.
3. Minimum clearance of about 50cm around the charger when wall-mounted.
4. A well-ventilated area to allow for proper heat dissipation.
5. An open area with no obstructions.
6. Avoid hazardous areas prone to electrical shocks or the presence of flammable or explosive materials.
7. Avoid areas that are likely to flood, or have accumulation of water.

Install Process

Only a qualified electrician should install and maintain the charger.
Untrained individuals should not perform these tasks.
Improper installation and repair will invalidate the product warranty.

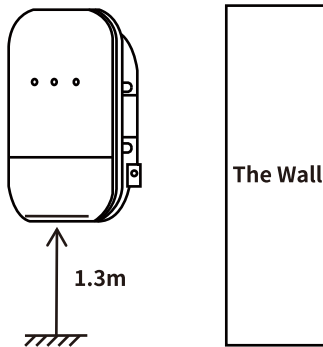
1. Installation tools

The picture below are the tools you need for installation.

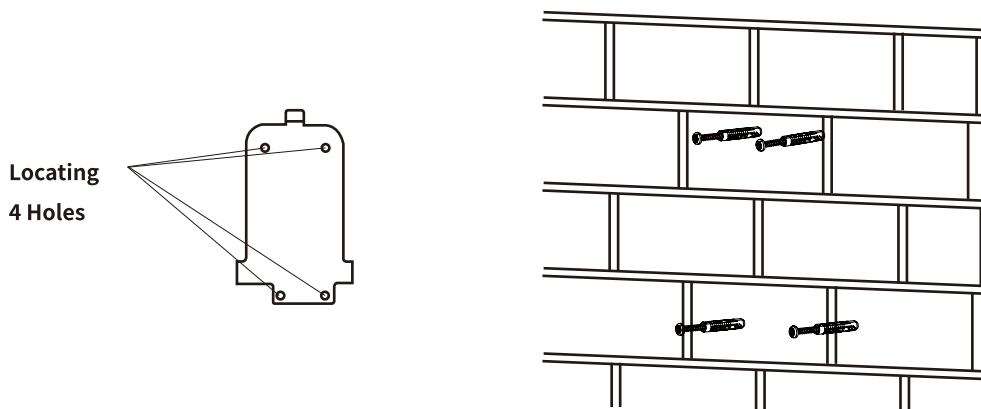


2.Installation steps

- a.Confirm the charger's location and mark it. The station's center must be installed at least 1.3 meters above the ground.

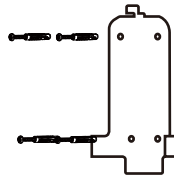


- b.Align the four locating holes on the hanging plate, then mark the wall. Drill a 60mm-deep hole at each mark and insert four $\Phi 8 \times 60\text{mm}$ expansion pipes.

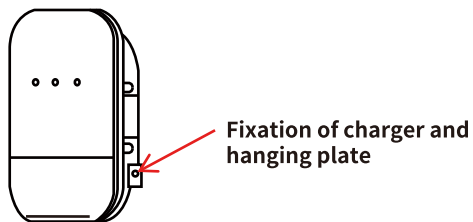


2.Installation steps

c. Secure the hanging plate to the wall using four M6 x 60mm cross-slot tapping screws, aligning them with the expansion pipes.



d. Hang the charger with the attached power line on the hanging plate. Secure the charger to the plate with two M4 x 6 cross-recessed pan head screws on each side. Upon tightening, the installation is complete.



Operation Instruction



Inspection Before Charging

Check the charging cable and connector for damage, ensuring no foreign objects, water, or impurities are present.



Connecting to Vehicle

Attach the charging connector to the vehicle and wait for the light indicator to flash green slowly, signaling it's ready to charge.



Initiating Charge with RFID

Swipe an RFID card near the RFID Reader to start the charging process.



Charging Indicator

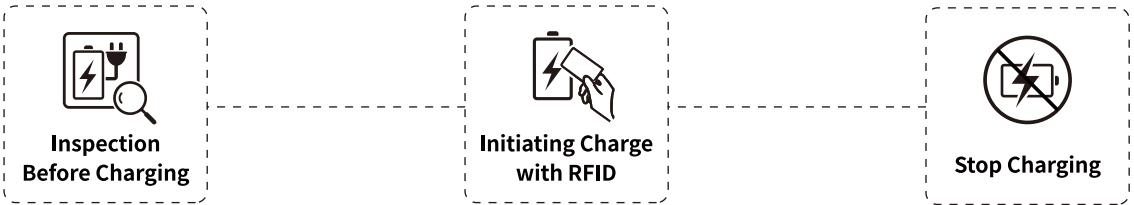
During charging, the blue and green lights will remain illuminated.



Stop Charging

1. Swipe an RFID card near the RFID Reader to stop the charging process.
2. The light will turn green when charging stops.
3. Unplug and close the charging port.
4. Secure the plug and coil the cable on the holder.

Operation Flow



Indicator Status		Charging Status	Next Step
	Green light stays on	Standby mode	Connect the charging plug to vehicle
	Green light flashing slowly	Vehicle-connector connected	Swipe the RFID card to start charging
	Green light flashing quickly	Waiting for charging	Waiting for the vehicle to start
	Green and blue light stays on	Charging	Swipe the RFID card to stop charging
	Red light flickering	Error alert	Check the troubleshooting chapter in this manual for solutions. Or contact the supplier of our product

Troubleshooting

For your safety, only a licensed electrician can test and diagnose any issues. The manufacturer is not responsible for damage or hazards caused by attempted repairs by an unqualified individual.

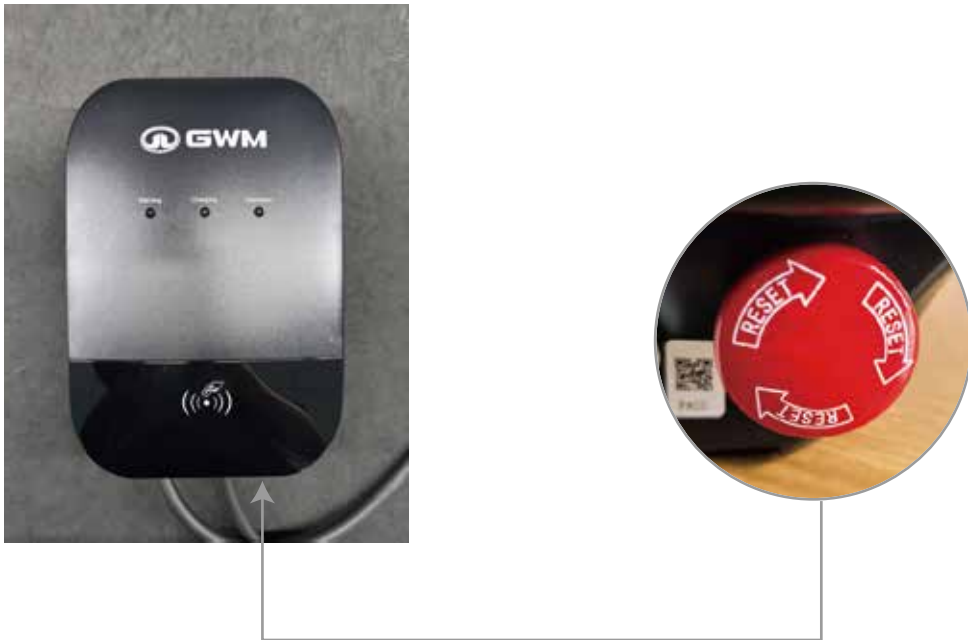
1.Indicator lamp explanation

Indicator Lamp Status	Likely Failure	What to Do
Red light flashes 1 time	Leakage	Contact the Customer Service
Red light flashes 2 times	CP Error	Contact the Customer Service
Red light flashes 3 times	Overvoltage	Contact local Power Utility Company
Red light flashes 4 times	Undervoltage	Contact local Power Utility Company
Red light flashes 5 times	Overcurrent	Contact the Customer Service
Red light flashes 6 times	Ground Fault	Contact authorized installer to Check the Grounding
Red light flashes 7 times	Charger is in the emergency stop status	If the charger is back to normal, please rotate the knob clockwise to unlock the emergency stop button.
Red light flashes 8 times	Short Circuit	Contact the Customer Service
Red light flashes 9 times	Over-temperature	Contact the Customer Service
Red light flashes 10 times	Temperature Sensor Error	Contact the Customer Service
Red light flashes 11 times	Metering Chip Error	Contact the Customer Service
Red light flashes 12 times	Leakage Self-test Fault	Contact the Customer Service
Red light flashes 13 times	Relay Contact Welding Fault	Contact the Customer Service

2.Common Issues and solutions

Emergency Button error:

If you see the red light flashing 7 times, please rotate the knob clockwise to unlock the emergency stop button, and the fault will be restored. This button is prone to accidental activation, please check it carefully after each use.



Ground Fault:

If the red light flashes 6 times, it indicates a ground fault. Please check whether the charger is connected to the ground wire. If the ground wire is already connected, please request a professional electrician to confirm whether the ground wire installation is in good condition.

Failure to start charging:

If the charger's light is flashing slowly in blue after the vehicle is plugged in and swipe the RFID card on the charger, please first check whether the vehicle is in reservation mode or if there are other charging configuration settings. If the issue cannot be resolved, please restart the charger (cut off the power and then turn on the power again) and try again to see if the charging problem persists. If the problem remains unresolved after the above attempts, please contact the after-sales service provider.

Warranty, Repair & Maintenance

The manufacturer warrants the new product without any material and manufacturing defects. During the warranty period, the manufacturer will repair and/or replace the parts if there is verified product failure.

Consult your local authorized representative for country-specific warranty details. The product contains no user-serviceable parts. Any hardware or software defects during the warranty period should be served by an authorized service provider.

Warranty Disclaimer

The manufacturer waives the product warranty under the following conditions:

- 1.Damage during customer transportation.
- 2.Unauthorized repairs attempted on the product.
- 3.Failure or damage from improper installation
- 4.Failure or damage from the usage outside of the defined working conditions.
- 5.Products outside the warranty period.
- 6.Damage from natural disasters (earthquakes, floods).
- 7.Cosmetic damage (burns, warping, deformation).

Customer Support

- 1.Contact the authorized local service provider first.
- 2.Visit **www.zdenenergy.com** and **www.zeedaenergy.com** for manufacturer help desk support, or email Customer Service at **service@zdenenergy.com**

Certification



