

# GVP<sup>®</sup> VALVE

## Metal Seated Gate Valve Series

[Http://www.fxgvp.com](http://www.fxgvp.com)



- DIN NRS Metal Seated Flange Gate Valves(F4\F5)
- NRS Metal Seated Flange Gate Valves
- RS Metal Seated Flange Gate Valves
- BS5163 Type B NRS Metal Seated Flange Gate Valves



**安徽方兴实业股份有限公司**  
ANHUI FANGXING INDUSTRIAL CO., LTD.

## BRIEF INTRODUCTION

Anhui Fangxing Industrial Co., Ltd, with over 20 years of valve manufacturing history since 1994, is a professional enterprise specialized in R&D, manufacturing and sales of valves and pipe-fittings, covering an area of more than 100,000 square meters with 88 million yuan of registered capital. Under the company are five subsidiaries including Fangxing International Trade Co., Fangxing Casting Co., Yongxing Casting Co., Zhenqing Logistics Co. etc., and it possesses two self-owned brands named "GVP" and "Fangxing", with more than 200 employees. In addition, our company has set up the provincial technology R&D center and equipped with precise production, machining and testing equipments, with annual output of 200,000 valves and 10,000 tons of castings, which ensures Fangxing as the leading manufacturing enterprise of water supply valves in China, as well as Anhui key production and export enterprise of mechanical and electrical products.

Fangxing owns the manufacturing license qualification of pressure pipeline equipment, and is the licensed enterprise to manufacture national water-saving and water sanitation security products. We strictly execute the international 6S on-site management system and quality control system, and participated to formulate Chinese national standard "resilient seated gate valve for water supply system", successively passed ISO9001 quality management system certification, ISO14001 Environment Management System Certification, OHSAS18001 Occupational Health Management System Certification, and our main products passed CE European Conformity Certification, Britain WRAS Water Regulations Advisory Scheme, French ACS Sanitation Conformity Certification, Russian GOST National Quality System Certification as well as EN1074 Type Approval Certification.

We provide high quality valves and pipe fittings to the water industrial systems of the world based on the international standard and first-class quality.



## PRODUCTION AND EQUIPMENT

Quality is the life of the enterprise, the company carries forward the enterprise culture and implements quality guarantee system internally, and transmits enterprise spirit and establishes brand conception externally, to ensure product quality, our company has been equipped with first class production and inspection equipment.



# COMPANY QUALIFICATION

Honor originates from devotion , every recognized certificate concentrates struggling efforts of FANGXING personnel , and every honor is our golden card and passport ,they are our road signs and our experiences..

## WE ARE

- Member of China Valves Association
- Anhui Famous Brand
- "Class AA company" of Chinese Customs
- High-tech Enterprise
- Accredited Technical Center

## WE ARE APPROVED BY

- ISO9001
- ISO14001
- OHSAS 18001
- CE
- EN1074
- WRAS
- ACS
- GOST



**WRAS** **CE**



## TEST & INSPECTION FACILITIES



01



02



03



04



05



06



07



08



09

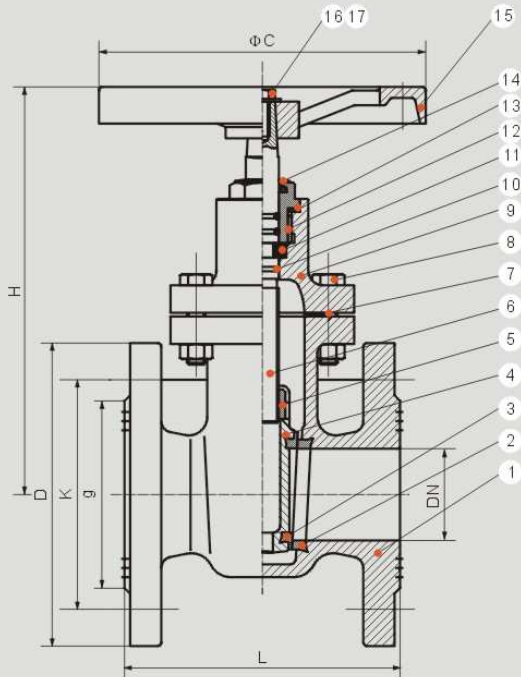


10

## DIN NRS METAL SEATED FLANGE GATE VALVES

F4

DN50-DN300



## APPLICATION STANDARDS

- ◎ Design standard: EN1171:2002
- ◎ Face to face: according to EN558-1 series 14 (DIN F4),
- ◎ Flange drilling: according to EN1092 PN10-16
- ◎ Size scope: DN50-DN300
- ◎ Working temperature : 0-80℃
- ◎ Working pressure: PN10-16
- ◎ Suitable medium: Water
- ◎ Coating: Epoxy coating with thickness  $\geq 250\mu\text{m}$  or painting with thickness  $\geq 80\mu\text{m}$

## PARTS LIST

No.	Part Name	Material
1	Body	Ductile Iron/Cast Iron
2	Body seat	Brass
3	Disc seat	Brass
4	Disc	Ductile iron
5	Disc nut	Brass
6	Stem	2Cr13
7	Gasket	NBR/EPDM
8	Bolt	Carbon steel
9	Bonnet	Ductile Iron/Cast Iron

No.	Part Name	Material
10	"O"ring	NBR/EPDM
11	Hold ring	Brass
12	Nut	Brass
13	Seal ring	PTFE
14	Dust ring	NBR/EPDM
15	Handwheel	Ductile iron
16	Washer	Carbon steel
17	Bolt	Carbon steel

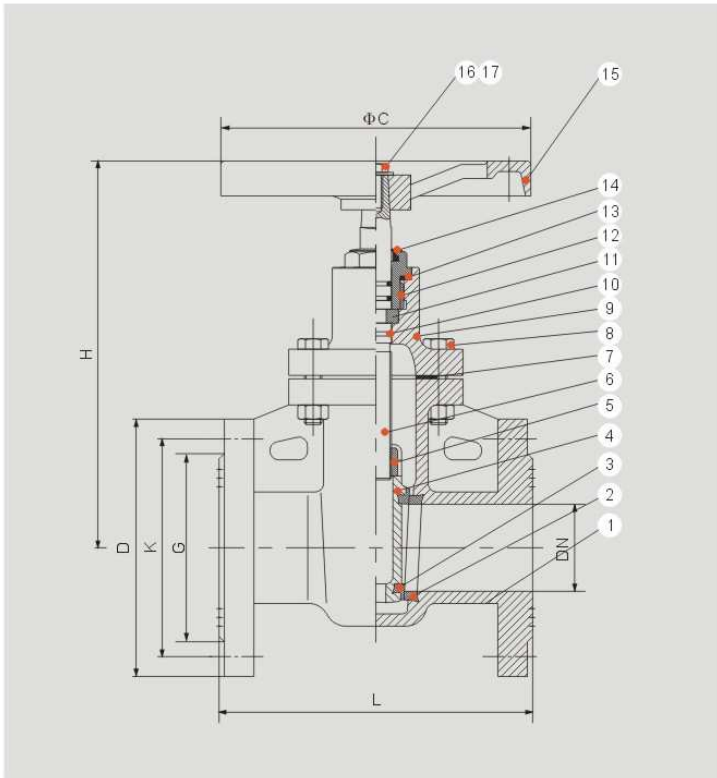
## DIMENSIONS

DN	L	(H) iron handwheel	C	D	K		G		f	B	n-d		□ S
					PN10	PN16	PN10	PN16			PN10	PN16	
50	150	227	180	165	125		99		3	19	4-19	4-19	14
65	170	250	180	185	145		118		3	19	4-19	4-19	14
80	180	267	200	200	160		132		3	19	8-19	8-19	15
100	190	328	250	220	180		156		3	19	8-19	8-19	15
125	200	392	280	250	210		184		3	19	8-19	8-19	19
150	210	466	280	285	240		211		3	19	8-23	8-23	19
200	230	502	340	340	295		266		3	20	8-23	12-23	19
250	250	588	340	405	350	355	319		3	22	12-23	12-28	24
300	270	673	400	460	400	410	370	370	4	24.5	12-23	12-28	27

## DIN NRS METAL SEATED FLANGE GATE VALVES

F5

DN50-DN300



## APPLICATION STANDARDS

- ◎ Design standard: EN1171:2002
- ◎ Face to face: according to EN558-1 series 15 (DIN F5)
- ◎ Flange drilling: according to EN1092 PN10-16
- ◎ Size scope: DN50-DN300
- ◎ Working temperature : 0-80℃
- ◎ Working pressure: PN10-16
- ◎ Suitable medium: Water
- ◎ Coating: Epoxy coating with thickness  $\geq 250\mu\text{m}$  or painting with thickness  $\geq 80\mu\text{m}$

## PARTS LIST

No.	Part Name	Material
1	Body	Ductile Iron/Cast Iron
2	Body seat	Brass
3	Disc seat	Brass
4	Disc	Ductile iron
5	Disc nut	Brass
6	Stem	2Cr13
7	Gasket	NBR/EPDM
8	Bolt	Carbon steel
9	Bonnet	Ductile Iron/Cast Iron

No.	Part Name	Material
10	"O"ring	NBR/EPDM
11	Hold ring	Brass
12	Nut	Brass
13	Seal ring	PTFE
14	Dust ring	NBR/EPDM
15	Handwheel	Ductile iron
16	Washer	Carbon steel
17	Bolt	Carbon steel

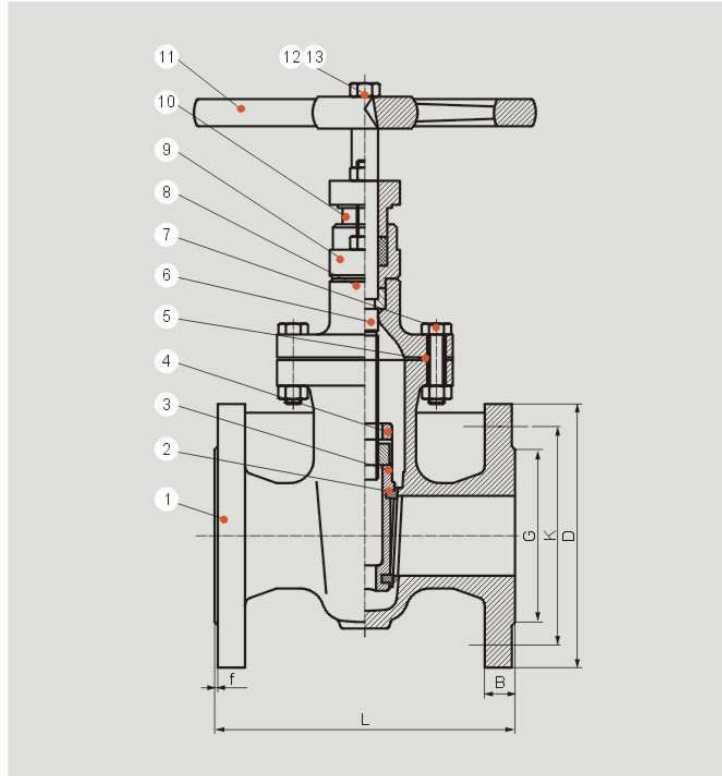
## DIMENSIONS

DN	L	(H) steel handwheel	C	D	K		G		f	B	n-d		S
					PN10	PN16	PN10	PN16			PN10	PN16	
50	250	227	180	165	125		99		3	19	4-19	4-19	14
65	270	250	180	185	145		118		3	19	4-19	4-19	14
80	280	267	200	200	160		132		3	19	8-19	8-19	15
100	300	328	250	220	180		156		3	19	8-19	8-19	15
125	325	392	280	250	210		184		3	19	8-19	8-19	19
150	350	466	280	285	240		211		3	19	8-23	8-23	19
200	400	502	340	340	295		266		3	20	8-23	12-23	19
250	450	588	340	405	350	355	319		3	22	12-23	12-28	24
300	500	673	400	460	400	410	370	370	4	24.5	12-23	12-28	27

## NRS METAL SEATED FLANGE GATE VALVES

ANSI

DN50-DN300 (2"-12")



## APPLICATION STANDARDS

- ◎ Design standard: MSS-SP-70
- ◎ Face to face: according to ASME B16.10.
- ◎ Flange drilling: according to ASME B 16.1-16.5
- ◎ Size scope: 2"-12"
- ◎ Working temperature : 0-80℃
- ◎ Working pressure: Class 125-150
- ◎ Suitable medium: Water
- ◎ Coating: Epoxy coating with thickness  $\geq 250\mu\text{m}$  or painting with thickness  $\geq 80\mu\text{m}$

## PARTS LIST

No.	Part Name	Material
1	Body	Ductile Iron/Cast Iron
2	Seat	Brass
3	Disc	Ductile Iron/Cast Iron
4	Disc nut	Brass
5	Gasket	NBR/EPDM
6	Stem	2Cr13
7	Bolt	Carbon steel

No.	Part Name	Material
8	Bonnet	Ductile Iron/Cast Iron
9	Stuffing box	Ductile Iron/Cast Iron
10	Gland	Ductile Iron/Cast Iron
11	Handwheel	Ductile Iron/Cast Iron
12	Washer	Carbon steel
13	Bolt	Carbon steel

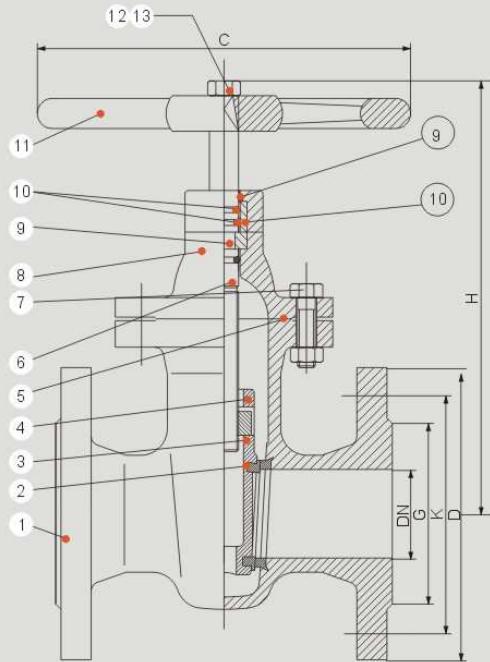
## DIMENSIONS

DN	L	(H) iron handwheel	C	D	B		f		K	G		n-d
					125	150	125	150		125	150	
50	178	285	178	152	15.9	14.3		2	120.5		92	4-φ 19
65	190	315	178	178	17.5	15.9		2	139.5		105	4-φ 19
80	203	335	203	191	19.1	17.5		2	152.5		127	4-φ 9
100	229	380	254	229	23.9	22.3		2	190.5		157	8-φ 19
125	254	415	254	254	23.9	22.3		2	216.5		186	8-φ 22
150	267	450	305	279	25.4	23.9		2	241.5		216	8-φ 22
200	292	560	356	343	28.6	27		2	298.5		270	8-φ 22
250	330	665	405	406	30.2	28.6		2	362		324	12-φ 25
300	356	700	457	483	31.8	30.2		2	432		381	12-φ 25

## NRS METAL SEATED FLANGE GATE VALVES

BS

DN50-DN300 (2"-12")



## APPLICATION STANDARDS

- ◎ Design standard: BS 5163
- ◎ Face to face: according to EN558-1 series 3(BS5163)
- ◎ Flange drilling: according to EN1092 PN10-16
- ◎ Size scope: DN50-DN300 (2"-12")
- ◎ Working temperature : 0-80℃
- ◎ Working pressure: PN10-16
- ◎ Suitable medium: Water
- ◎ Coating: Epoxy coating with thickness  $\geq 250\mu\text{m}$  or painting with thickness  $\geq 80\mu\text{m}$

## PARTS LIST

No.	Part Name	Material
1	Body	Ductile Iron/Cast Iron
2	Seat	Brass
3	Disc	Ductile Iron/Cast Iron
4	Disc nut	Brass
5	Gasket	NBR/EPDM
6	Stem	2Cr13
7	Bolt	Carbon steel

No.	Part Name	Material
8	Bonnet	Ductile Iron/Cast Iron
9	Holding ring	Ductile Iron/Cast Iron
10	"O"ring	NBR/EPDM
11	Handwheel	Ductile Iron
12	Dusting ring	Carbon steel
13	Brass ring	Carbon steel

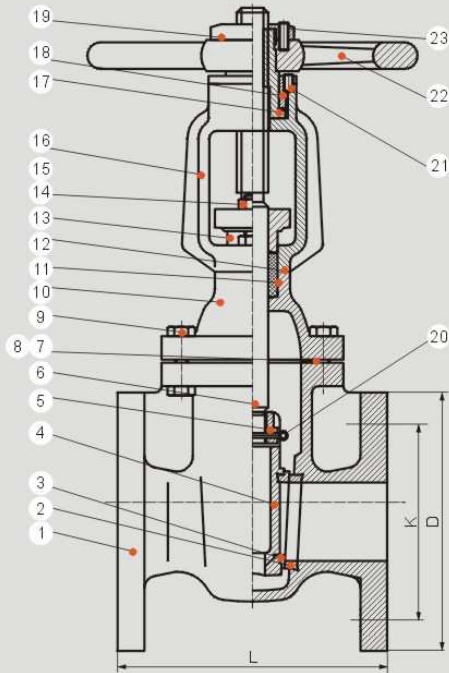
## DIMENSIONS

DN	L	(H) iron handwheel	C	D	K		G		n-d
					PN10	PN16	PN10	PN16	
50	178	245	178	165	125		99		4-19
65	190	280	178	185	145		118		4-19
80	203	300	203	200	160		132		8-19
100	229	340	254	220	180		156		8-19
125	254	375	254	250	210		184		8-19
150	267	415	305	280	240		211		8-23
200	292	510	356	340	295		266		12-23
250	330	615	405	405	350	355	319		12-28
300	356	700	457	460	400	410	370	370	12-28

## RS METAL SEATED FLANGE GATE VALVES

ANSI

DN50-DN300 (2"-12")



## APPLICATION STANDARDS

- ◎ Design standard: MSS-SP-70
- ◎ Face to face: according to ASME B16.10.
- ◎ Flange drilling: according to ASME B 16.1-16.5
- ◎ Size scope: 2"-12"
- ◎ Working temperature : 0-80℃
- ◎ Working pressure: Class 125-150
- ◎ Suitable medium: Water
- ◎ Coating: Epoxy coating with thickness  $\geq 250\mu\text{m}$  or painting with thickness  $\geq 80\mu\text{m}$

## PARTS LIST

No.	Part Name	Material
1	Body	Ductile Iron/Cast iron
2	Body seat	Brass
3	Disc seat	Brass
4	Disc	Ductile Iron
5	Disc nut	Brass
6	Stem	2Cr13
7	Gasket	NBR/EPDM
8	Bolt nut	Carbon Steel
9	Bonnet bolt	Carbon Steel
10	Bonnet	Cast iron
11	Filler	Graphit
12	Seal ring	NBR/EPDM

No.	Part Name	Material
13	Gland	Ductile iron
14	Bolt	Q235A
15	Bolt nut	Q235A
16	Yoke	Ductile iron
17	Nut	Brass
18	Nut	Ductile iron
19	Nut	Brass
20	Pin	Stainless steel
21	Nut	Carbon Steel
22	Handwheel	Ductile iron
23	Nut	Carbon Steel

## DIMENSIONS

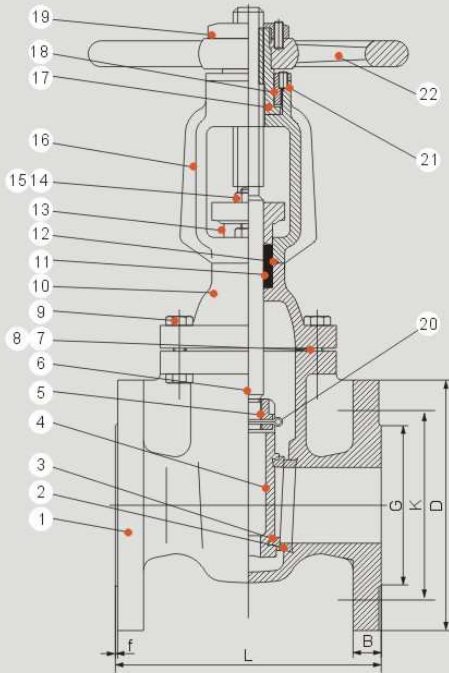
DN	L	D	K	n-d	
				PN10	PN16
50	178	152	121	4-19	4-19
65	190	178	140	4-19	4-19
80	203	191	152	8-19	8-19
100	229	229	191	8-19	8-19
125	254	254	216	8-19	8-19

DN	L	D	K	n-d	
				PN10	PN16
150	267	279	241	8-23	8-23
200	292	343	298	8-23	12-23
250	330	406	362	12-23	12-28
300	356	483	432	12-23	12-28

## RS METAL SEATED FLANGE GATE VALVES

BS

DN50-DN300 (2"-12")



## APPLICATION STANDARDS

- ◎ Design standard: BS 5163
- ◎ Face to face: according to EN558-1 series 3(BS5163)
- ◎ Flange drilling: according to EN1092 PN10-16
- ◎ Size scope: DN50-DN300 (2"-12")
- ◎ Working temperature : 0-80℃
- ◎ Working pressure: PN10-16
- ◎ Suitable medium: Water
- ◎ Coating: Epoxy coating with thickness  $\geq 250\mu\text{m}$  or painting with thickness  $\geq 80\mu\text{m}$

## PARTS LIST

No.	Part Name	Material
1	Body	Ductile Iron/Cast iron
2	Body seat	Brass
3	Disc seat	Brass
4	Disc	Ductile Iron
5	Disc nut	Brass
6	Stem	2Cr13
7	Gasket	NBR/EPDM
8	Bolt nut	Carbon steel
9	Bonnet bolt	Carbon steel
10	Bonnet	Ductile Iron/Cast iron
11	Packing	Graphite

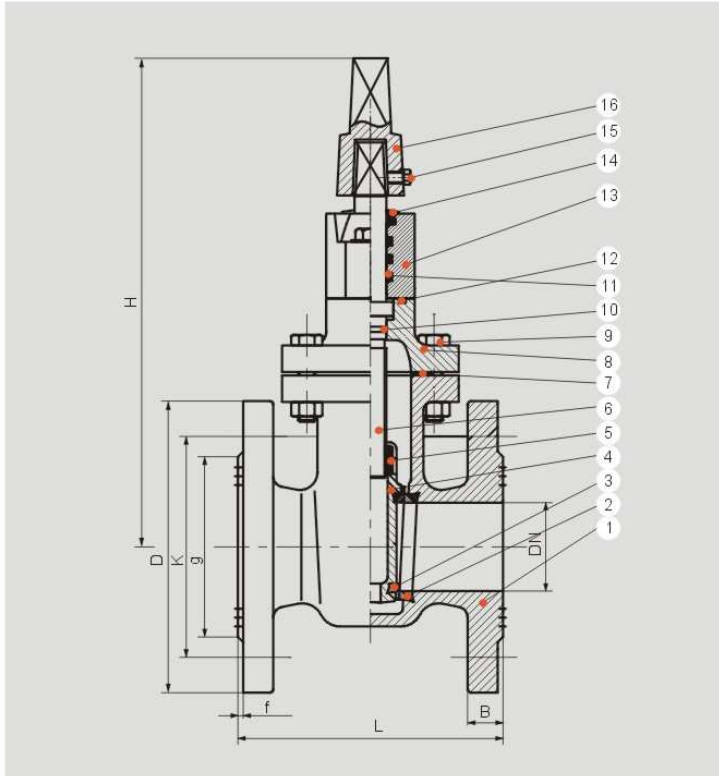
No.	Part Name	Material
12	Seal ring	NBR/EPDM
13	Gland	Ductile iron
14	Bolt	Carbon steel
15	Bolt nut	Carbon steel
16	Yoke	Ductile iron
17	Nut	Brass
18	Nut	Ductile iron
19	Nut	Stainless steel
20	Nut	Stainless steel
21	Nut	Carbon steel
22	Handwheel	Ductile iron

## DIMENSIONS

DN	L	C	D	K		G		f	B	n-d	
				PN10	PN16	PN10	PN16			PN10	PN16
50	178	178	165	125		99		3	19	4-19	4-19
65	190	178	185	145		118		3	19	4-19	4-19
80	203	203	200	160		132		3	19	8-19	8-19
100	229	254	220	180		156		3	19	8-19	8-19
125	254	254	250	210		184		3	19	8-19	8-19
150	267	305	285	240		211		3	19	8-23	8-23
200	292	356	340	295		266		3	20	8-23	12-23
250	330	400	405	350	355	319		3	22	12-23	12-28
300	356	457	460	400	410	370	370	4	24.5	12-23	12-28

## BS5163 TYPE B NRS METAL SEATED FLANGE GATE VALVES

DN50-DN300



## APPLICATION STANDARDS

- ◎ Design standard: BS5163 type B
- ◎ Face to face: according to EN558-1 series 3(BS5163)
- ◎ Flange drilling: according to EN1092 PN10-16
- ◎ Size scope: DN80-DN300 (3"-12")
- ◎ Working temperature : 0-80℃
- ◎ Working pressure: PN10-16
- ◎ Suitable medium: Water
- ◎ Coating: Epoxy coating with thickness  $\geq 250\mu\text{m}$  or painting with thickness  $\geq 80\mu\text{m}$

## PARTS LIST

No.	Part Name	Material
1	Body	Ductile Iron
2	Body ring	Albronze
3	Seal ring	Albronze
4	Disc	Ductile Iron
5	Disc nut	Albronze
6	Stem	2Cr13
7	Gasket	NBR/EPDM
8	Bonnet	Ductile Iron

No.	Part Name	Material
9	Bolts	Stainless steel
10	O ring	NBR/EPDM
11	O ring	NBR/EPDM
12	O ring	NBR/EPDM
13	Gland	Ductile Iron
14	Dust ring	NBR/EPDM
15	bolts	Stainless steel
16	Square head	Ductile Iron

## DIMENSIONS

DN	L	H	D	K		G		f	B	n-d	
				PN10	PN16	PN10	PN16			PN10	PN16
80	203	390	200	160		132		3	19	4-19	8-19
100	229	428	220	180		156		3	19	8-19	8-19
150	267	513	285	240		211		3	19	8-23	8-23
200	292	602	340	295		266		3	20	8-23	12-23
250	330	712	405	350	355	319		3	22	12-23	12-28
300	356	790	460	400	410	370	370	4	24.5	12-23	12-28

*Providing the high quality environmental valves, improving the quality of human life.*



Add: No. 1 Economic Development Zone, Qingyang, Anhui, China

Tel: +86-566-5115264 +86-566-5115556

Fax: +86-566-5115558 HTTP://www.fxgvp.com

E-mail: fxInc@fxgvp.com, fxfzs@fxgvp.com

- We reserve the right to make any changes to all the specification design and without notice •
- Fangxing company copyright; Adopt the ecological paper for printing •