

# GVP<sup>®</sup> VALVE

## Check Valve Series

[Http://www.fxgvp.com](http://www.fxgvp.com)



- Flexible Seal Check Valves
- Swing Check Valves
- Ball Check Valves
- Silent Check Valve
- Wafer Check Valves
- Foot Valves



**安徽方兴实业股份有限公司**  
ANHUI FANGXING INDUSTRIAL CO., LTD.

## BRIEF INTRODUCTION

Anhui Fangxing Industrial Co., Ltd, with over 20 years of valve manufacturing history since 1994, is a professional enterprise specialized in R&D, manufacturing and sales of valves and pipe-fittings, covering an area of more than 100,000 square meters with 88 million yuan of registered capital. Under the company are five subsidiaries including Fangxing International Trade Co., Fangxing Casting Co., Yongxing Casting Co., Zhenqing Logistics Co. etc., and it possesses two self-owned brands named "GVP" and "Fangxing", with more than 200 employees. In addition, our company has set up the provincial technology R&D center and equipped with precise production, machining and testing equipments, with annual output of 200,000 valves and 10,000 tons of castings, which ensures Fangxing as the leading manufacturing enterprise of water supply valves in China, as well as Anhui key production and export enterprise of mechanical and electrical products.

Fangxing owns the manufacturing license qualification of pressure pipeline equipment, and is the licensed enterprise to manufacture national water-saving and water sanitation security products. We strictly execute the international 6S on-site management system and quality control system, and participated to formulate Chinese national standard "resilient seated gate valve for water supply system", successively passed ISO9001 quality management system certification, ISO14001 Environment Management System Certification, OHSAS18001 Occupational Health Management System Certification, and our main products passed CE European Conformity Certification, Britain WRAS Water Regulations Advisory Scheme, French ACS Sanitation Conformity Certification, Russian GOST National Quality System Certification as well as EN1074 Type Approval Certification.

We provide high quality valves and pipe fittings to the water industrial systems of the world based on the international standard and first-class quality.





## PRODUCTION AND EQUIPMENT

Quality is the life of the enterprise, the company carries forward the enterprise culture and implements quality guarantee system internally, and transmits enterprise spirit and establishes brand conception externally, to ensure product quality, our company has been equipped with first class production and inspection equipment.



# COMPANY QUALIFICATION

Honor originates from devotion , every recognized certificate concentrates struggling efforts of FANGXING personnel , and every honor is our golden card and passport ,they are our road signs and our experiences..

## WE ARE

- Member of China Valves Association
- Anhui Famous Brand
- "Class AA company" of Chinese Customs
- High-tech Enterprise
- Accredited Technical Center

## WE ARE APPROVED BY

- ISO9001
- ISO14001
- OHSAS 18001
- CE
- EN1074
- WRAS
- ACS
- GOST



**WRAS** **CE**





## TEST & INSPECTION FACILITIES



01



02



03



04



05



06



07



08



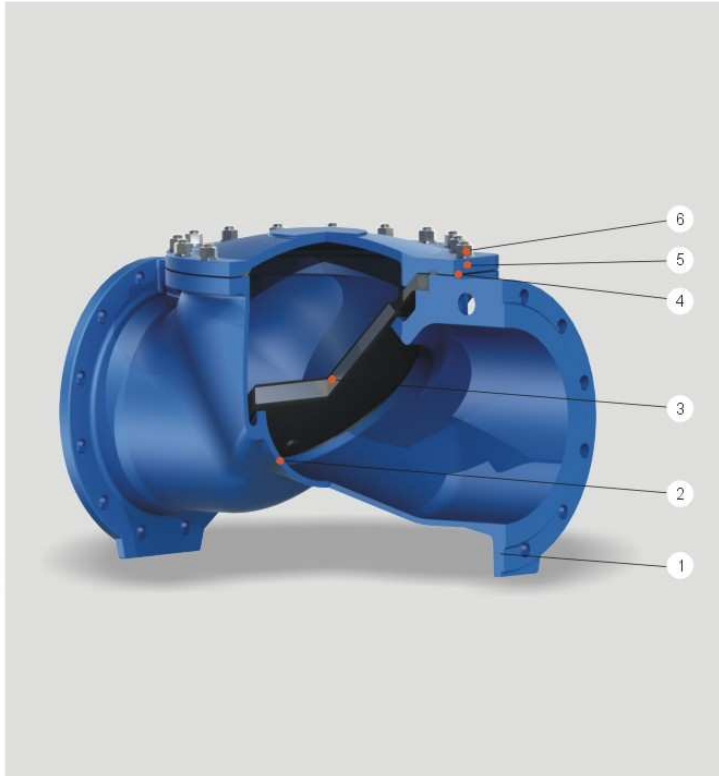
09



10

## 45 / CHECK VALVES

## DN50-DN200



## PARTS LIST

No.	Part Name	Material
1	Body	Ductile Iron
2	Bolt	Carbon steel
3	Disc	Ductile Iron with NBR
4	Gasket	NBR
5	Bonnet	Ductile Iron
6	Bolt	Carbon steel

## APPLICATION STANDARDS

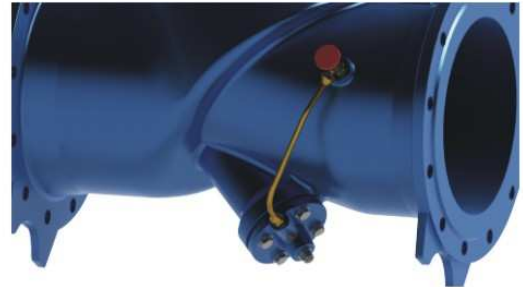
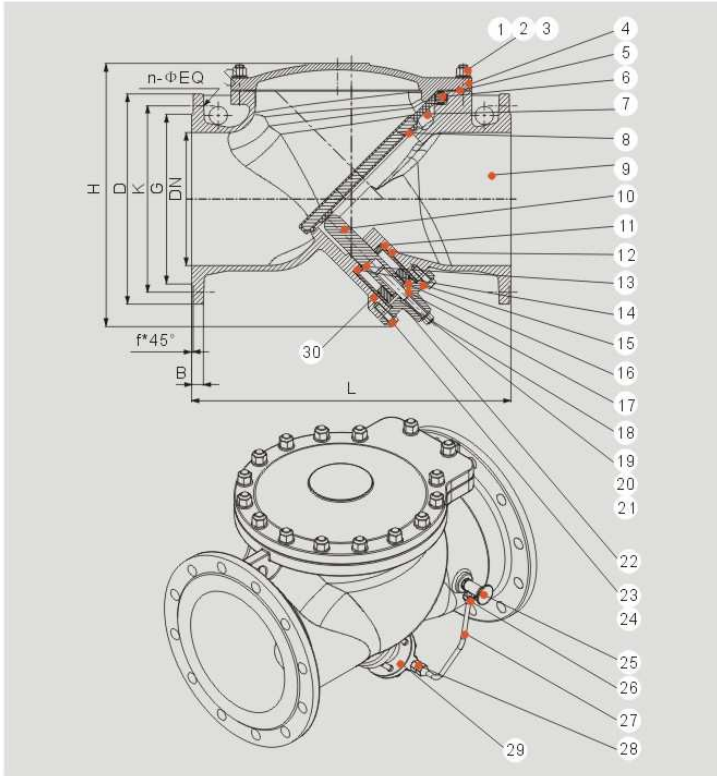
- Design standard: CJ/T154-2001
- Face to face: according to EN558-1 series 48
- Flange drilling: according to EN1092 Pn10
- Size scope: DN50-DN200
- Working temperature : 0-80℃
- Working pressure: Pn10
- Suitable medium: Water
- Coating: Epoxy coating with thickness  $\geq 250\mu\text{m}$

## DIMENSIONS

DN	L	H	D	K		G		f	B	n-d	
				PN10	PN16	PN10	PN16			PN10	PN16
50	203	83	165	125		99		3	19	4-19	4-19
65	216	90	185	145		118		3	19	4-19	4-19
80	241	95	200	160		132		3	19	8-19	8-19
100	292	110	220	180		156		3	19	8-19	8-19
125	330	135	250	210		184		3	19	8-19	8-19
150	356	156	285	240		211		3	19	8-23	8-23
200	495	186	340	295		266		3	20	8-23	12-23

## FLEXIBLE SEAL CHECK VALVES

## DN250-DN600



## PARTS LIST

No.	Part Name	Material
1	Bolt	Galvanized carbon steel
2	hex nut	Galvanized carbon steel
3	washer	Galvanized carbon steel
4	cover	Ductile iron
5	gasket	NBR/EPDM
6	shaft	Carbon steel
7	Disc	Carbon steel EPDM
8	body	Ductile iron
9	Piston rod	2Cr13
10	Sealing	Stainless steel
11	piston cylinder	Stainless steel
12	"O" ring	NBR
13	"O" ring	NBR
14	"O" ring	NBR
15	"O" ring	NBR
16	"O" ring	NBR
17	Piston	Stainless steel
18	Piston lever	2Cr13
19	Hex nut	Galvanized carbon steel
20	Washer	Galvanized carbon steel
21	Piston cover	Ductile iron
22	Hex nut	Galvanized carbon steel
23	washer	Galvanized carbon steel
24	angle valve	Brass
25	Hex nut	Brass
26	pipe	Brass
27	Connector	Brass
28	air valves	Brass
29	"O" ring	NBR

## APPLICATION STANDARDS

- Design standard: CJ/T154-2001
- Face to face: according to EN558-1 series 48
- Flange drilling: according to EN1092 Pn10
- Size scope: DN250-DN600
- Working temperature : 0-80℃
- Working pressure: Pn10
- Suitable medium: Water
- Coating: Epoxy coating with thickness  $\geq 250\mu\text{m}$

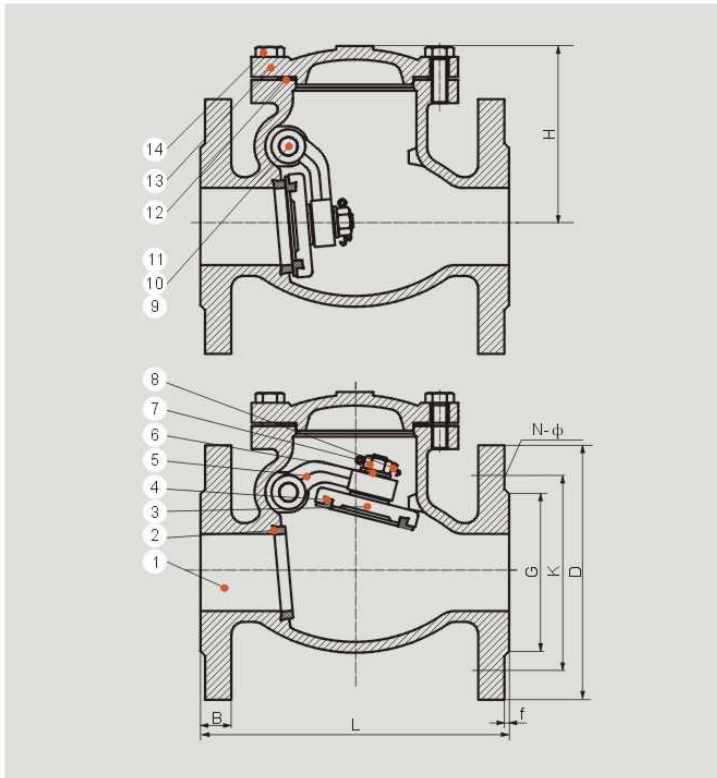
## DIMENSIONS

DN	H	L	D	K	G	B	f	n-φ
250	496	600	395	350	319	22	3	12-φ 23
300	538	700	445	400	370	24.5	4	12-φ 23
400	665	900	565	515	480	24.5	4	16-φ 28
500	905	1100	670	620	582	26.5	4	20-φ 28
600	985	1300	780	725	682	30	5	20-φ 31



## SWING CHECK VALVES

DN50-DN300



## PARTS LIST

No.	Part Name	Material
1	Body	Ductile Iron/Cast iron
2	Body seat	Ductile Iron
3	Disc	Cast iron
4	Disc seat	Brass
5	Stem	2Cr13
6	Washer	Carbon steel
7	Nut	Carbon steel
8	Pin	Carbon steel
9	Ingo pin	2Cr13
10	Nut	Carbon steel
11	"O" ring	NBR
12	Gasket	NBR
13	Bonnet	Cast iron
14	Bonnet bolt	Carbon steel

## APPLICATION STANDARDS

- Design standard: En12334
- Face to face: according to EN558-1 series 10 (DIN 3202-F6), series 48(BS5153), MSS-SP-71
- Flange drilling: according to EN1092 PN10-16, ASME B 16.1-16.5
- Size scope: DN50-DN300(2"-12")
- Working temperature : 0-80℃
- Working pressure: PN10-16, Class 125-150
- Suitable medium: Water
- Coating: Epoxy coating with thickness  $\geq 250\mu\text{m}$  or painting with thickness  $\geq 80\mu\text{m}$

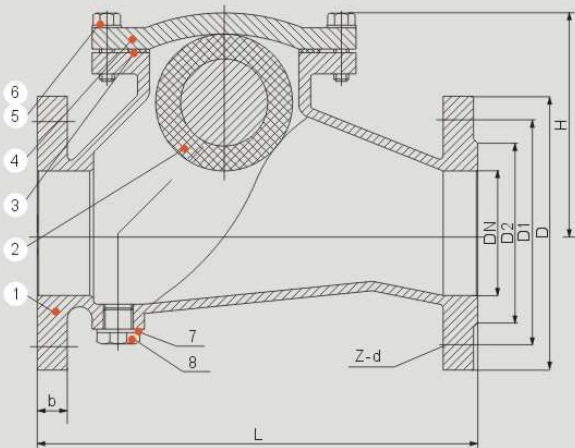
## DIMENSIONS

DN	L	H	D	K		G		f	B	n-d	
				PN10	PN16	PN10	PN16			PN10	PN16
50	200	117	165	125		99		3	19	4-19	4-19
65	240	127	185	145		118		3	19	4-19	4-19
80	260	144	200	160		132		3	19	8-19	8-19
100	300	162	220	180		156		3	19	8-19	8-19
125	350	186	250	210		184		3	19	8-19	8-19
150	400	218	285	240		211		3	19	8-23	8-23
200	500	248	340	295		266		3	20	8-23	12-23
250	600	284	405	350	355	319		3	22	12-23	12-28
300	700	335	460	400	410	370	370	4	24.5	12-23	12-28



## BALL CHECK VALVES

DN40-DN300



## PARTS LIST

No.	Part Name	Material
1	Body	Ductile iron
2	Ball Float	NBR/EPDM
3	Gasket	NBR/EPDM
4	Bonnet	Ductile iron
5	Bolt	Carbon steel
6	Washer	Carbon steel
7	Washer	NYL
8	Plug	Carbon steel

## APPLICATION STANDARDS

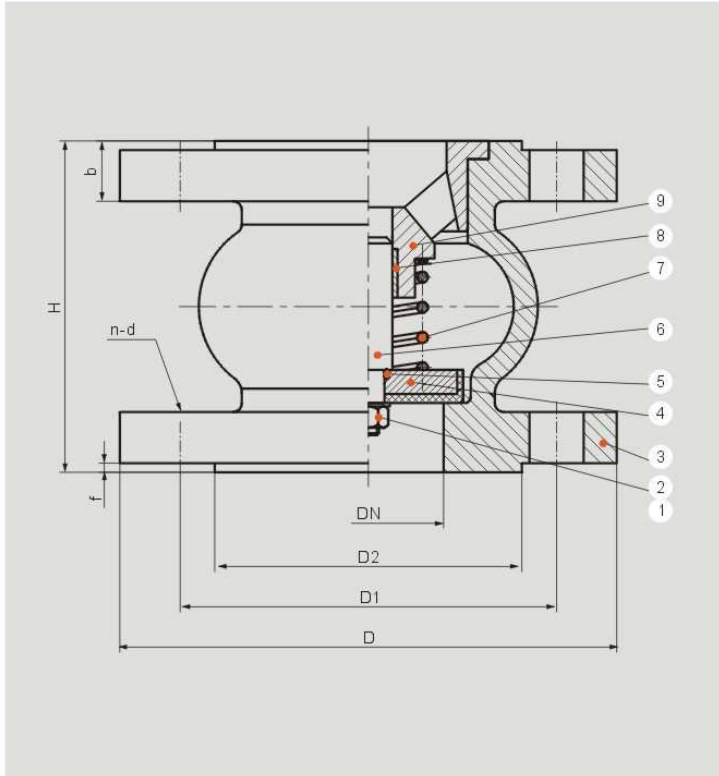
- Face to face: according to DIN3202-F6
- Flange drilling: according to EN1092 PN10-16, ASME B 16.1-16.5
- Size scope: DN40-DN300
- Working temperature : 0-80℃
- Working pressure: PN10-16
- Suitable medium: Water
- Coating: Epoxy coating with thickness  $\geq 250\mu\text{m}$  or painting with thickness  $\geq 80\mu\text{m}$

## DIMENSIONS

DN	D	D1	D2	L	b	f	H	Z-d	Kg
40	Φ150	Φ110	Φ84	180	18	3	125	4-Φ19	16
50	Φ165	Φ125	Φ99	200	19	3	140	4-Φ19	18
65	Φ185	Φ145	Φ118	240	19	3	150	4-Φ19	20
80	Φ200	Φ160	Φ132	260	19	3	162	8-Φ19	24
100	Φ220	Φ180	Φ156	300	19	3	194	8-Φ19	30
125	Φ250	Φ210	Φ184	350	19	3	242	8-Φ19	40
150	Φ285	Φ240	Φ211	400	19	3	277	8-Φ23	52
200	Φ340	Φ295	Φ266	500	20	3	362	12-Φ23	84
250	Φ400	Φ355	Φ319	600	22	3	418	12-Φ28	125
300	Φ455	Φ410	Φ370	700	24.5	4	497	12-Φ28	-

## SILENT CHECK VALVE

DN40-DN300



## PARTS LIST

No.	Part Name	Material
1	Gasket	Carbon steel
2	Nut	Carbon steel
3	Body	Cast iron
4	Disc	Ductile iron/NBR
5	"O"ring	NBR
6	Guiding stem	Stainless steel
7	Spring	65Mn
8	Bush	Brass
9	Bonnet	Cast iron

## APPLICATION STANDARDS

- Flange drilling: according to EN1092 PN10-16
- Size scope: DN40-DN300
- Working temperature : 0-80℃
- Working pressure: PN10-16

- Suitable medium: Water
- Coating: Epoxy coating with thickness  $\geq 250\mu\text{m}$  or painting with thickness  $\geq 80\mu\text{m}$

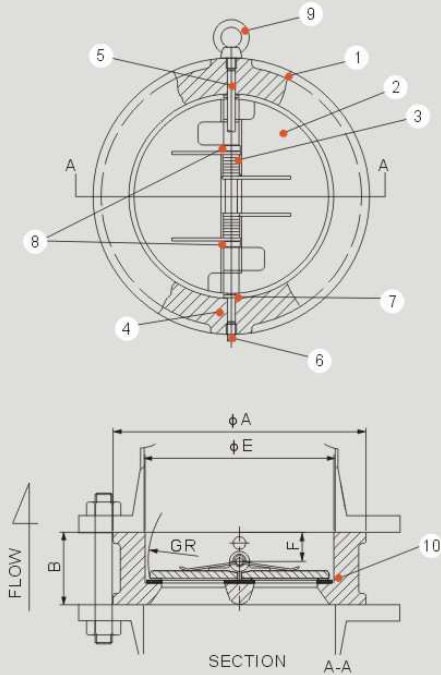
## DIMENSIONS

DN	L	D	K		G		f	B		n-d	
			PN10	PN16	PN10	PN16		PN10	PN16	PN10	PN16
40	100	150	110		84		3	18	18	4-19	4-19
50	100	165	125		99		3	20	20	4-19	4-19
65	120	185	145		118		3	20	20	4-19	4-19
80	140	200	160		132		3	22	22	8-19	8-19
100	170	220	180		156		3	24	24	8-19	8-19
125	200	250	210		184		3	26	26	8-19	8-19
150	230	285	240		211		3	26	26	8-23	8-23
200	300	340	295		266		3	26	30	8-23	12-23
250	370	405	400	350	319		3	28	32	12-23	12-28
300	410	460	410	355	370	370	4	28	32	12-23	12-28



## WAFER CHECK VALVES

DN50-DN900 (DIN/BS), 2"-36" (ANSI)



### PARTS LIST

No.	Part Name	Material
1	Body	Ductile Iron
2	Plated	SS304
3	Spring	SS304
4	Hinge pin	SS304
5	Stop pin	SS304
6	Plug	Steel
7	Body bearing	P.T.F.E
8	Spring bearing	P.T.F.E
9	Eye bolt	Steel
10	Body seat	NBR

### APPLICATION STANDARDS

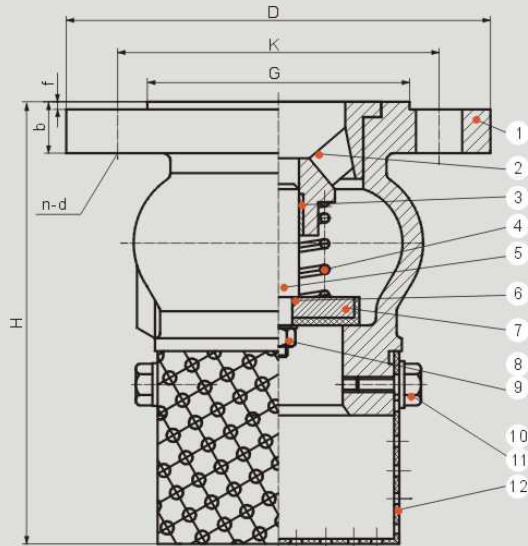
- Design standard: API 594
- Face to face: according to EN558-1 series 16
- Flange: according to EN1092 PN10-16
- Size scope: DN50-DN900 (DIN/BS)
- Working temperature: NBR 0-70°C, EPDM 0-80°C
- Working pressure: PN10-16
- Suitable medium: Water
- Coating: Epoxy coating with thickness  $\geq 250\mu\text{m}$

### DIMENSIONS

DN	PN10					PN16				
	$\phi A$	$\phi E$	B	GR	F	$\phi A$	$\phi E$	B	GR	F
50	107	65	43	28.8	19	107	65	43	28.8	19
65	127	80	46	36.1	20	127	80	46	36.1	20
80	142	94	64	43.4	28	142	94	64	43.4	28
100	162	117	64	52.8	27	162	117	64	52.8	27
125	192	145	70	65.7	30	192	145	70	65.7	30
150	218	170	76	78.6	31	218	170	76	78.6	31
200	273	224	89	104.4	33	273	224	89	104.4	33
250	328	265	114	127	50	328	265	114	127	50
300	378	310	114	148.3	43	378	310	114	148.3	43
350	438	360	127	172.4	45	438	360	127	172.4	45
400	489	410	140	197.4	52	489	410	140	197.4	52
500	594	505	152	241	58	617	505	152	241	58
600	695	624	178	295.4	73	700	624	178	295.4	73
700	810	720	229	338.5	98	804	720	229	338.5	98
800	915	825	241	385.5	100	911	825	241	385.5	100
900	1015	927	241	455.5	100	1011	927	241	455.5	100

## FOOT VALVES

## DN40-DN300



## PARTS LIST

No.	Part Name	Material
1	Body	Cast iron
2	Bonnet	Cast iron
3	Bushing	Brass
4	Spring	65Mn
5	Guiding stem	Stainless steel
6	"O"ring	NBR
7	Disc	Ductile iron/NBR
8	Nut	Carbon steel
9	Washer	Carbon steel
10	Nut	Carbon steel
11	Washer	Carbon steel
12	Sleeve	Stainless steel

## APPLICATION STANDARDS

- Flange drilling: according to EN1092 PN10-16
- Size scope: DN40-DN300
- Working temperature : 0-80℃
- Working pressure: PN10-16

- Suitable medium: Water
- Coating: Epoxy coating with thickness  $\geq 250\mu\text{m}$  or painting with thickness  $\geq 80\mu\text{m}$

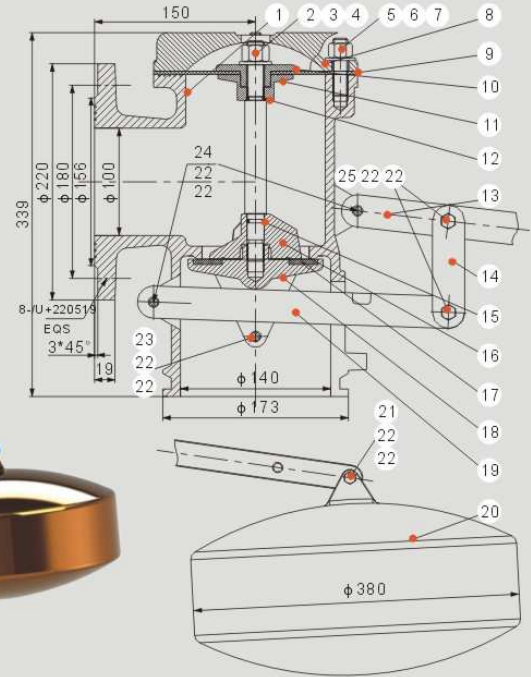
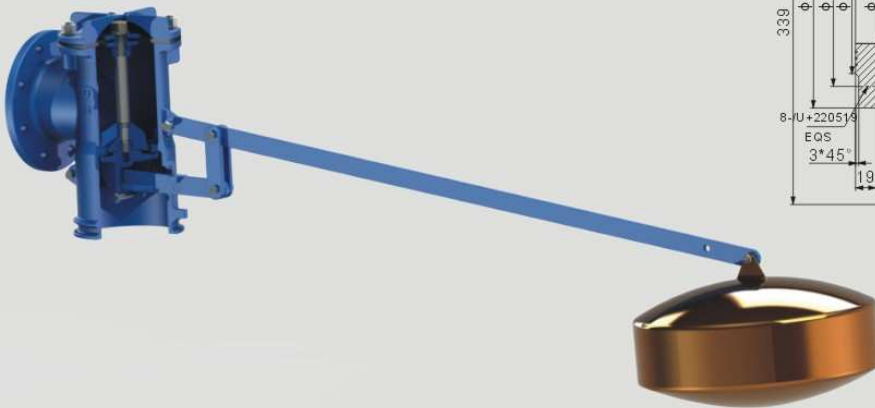
## DIMENSIONS

DN	H	L	K		G		f	B		n-d	
			PN10	PN16	PN10	PN16		PN10	PN16	PN10	PN16
40	143	150	110		84		3	18	18	4-19	4-19
50	165	165	125		99		3	20	20	4-19	4-19
65	201	185	145		118		3	20	20	4-19	4-19
80	221	200	160		132		3	22	22	8-19	8-19
100	265	220	180		156		3	24	24	8-19	8-19
125	300	250	210		184		3	26	26	8-19	8-19
150	360	285	240		211		3	26	26	8-23	8-23
200	470	340	295		266		3	26	30	8-23	12-23
250	568	405	350	355	319		3	28	32	12-23	12-28
300	658	460	400	410	370	370	4	28	32	12-23	12-28



## FLOAT VALVES

DN80-DN300



## APPLICATION STANDARDS

- ⊗ Flange drilling: according to EN1092 PN10-16
- ⊗ Size scope: DN80-DN300
- ⊗ Working temperature : 0-80℃
- ⊗ Working pressure: PN10-16
- ⊗ Suitable medium: Water
- ⊗ Coating: Epoxy coating with thickness  $\geq 250\mu\text{m}$

## PARTS LIST

No.	Part Name	Material
1	Body	Ductile Iron
2	Stem	2Cr12
3	Bolts	Calvanized carbon steel
4	Washer	Calvanized carbon steel
5	Doyble end Studs	Calvanized carbon steel
6	Bolts	Calvanized carbon steel
7	Washer	Calvanized carbon steel
8	Bommet	Ductile Iron
9	Gasket	Nylon with EPDM
10	Upper diaphragm holder	Ductile Iron
11	"O"ring	Ductile Iron
12	Long lerer	NBR
13	Lower gasket	Carbon steel

No.	Part Name	Material
14	"O"ring	Carbon steel
15	Upper gasket	NBR
16	Gasket	Ductile Iron
17	Lower gasket	EPDM
18	Short lever	Ductile Iron
19	Short lever	Ductile Iron
20	Ball float	Aluminum bromze
21	Bolts	Calvanized carbon steel
22	Bolts	Calvanized carbon steel
23	Bolts	Calvanized carbon steel
24	Bolts	Calvanized carbon steel
25	Bolts	Calvanized carbon steel

*Providing the high quality environmental valves, improving the quality of human life.*



**安徽方兴实业股份有限公司**  
ANHUI FANGXING INDUSTRIAL CO., LTD.

Add: No. 1 Economic Development Zone, Qingyang, Anhui, China

Tel: +86-566-5115264    +86-566-5115556

Fax: +86-566-5115558    HTTP://www.fxgvp.com

E-mail: fxInc@fxgvp.com,    fxfzs@fxgvp.com

- We reserve the right to make any changes to all the specification design and without notice •
- Fangxing company copyright; Adopt the ecological paper for printing •