

## Residual Circuit Breaker with Overload Protection



GL018D



GL018U

### Application

GL018 series residual circuit breaker with overcurrent protection, it's in accordance with standards of IEC61009, GB16917. 2P switching of ph&N, Phase only protected against overloads and short circuits. it is used in commercial, industrial and domestic electrical distribution systems.

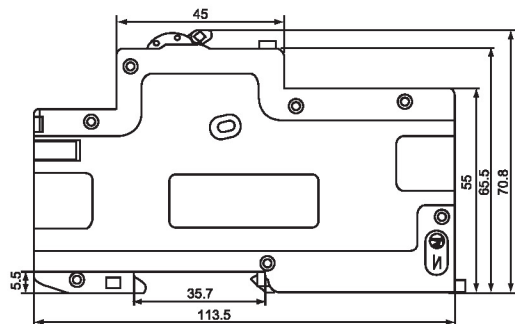
It mustn't be used as the sole means of providing protection against direct contact. The RCBO incorporates a residual current operated electromagnetic release which operates without any auxiliary source of supply to open a circuit automatically in the case of an earth leakage fault between phase and earth greater than or equal to  $I_n$ . The RCBO combined MCB&RCCB provides:

- Protection against indirect contact
- Complementary protection against direct contact
- Protection for the installation against insulation faults

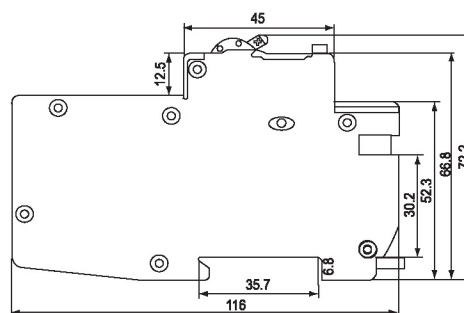
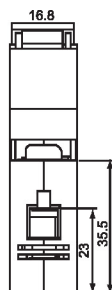
### Technical Specification

Type	GL018D	GL018U
Number of poles	1P+N	
Rated current( $I_n$ )	1, 2, 3, 4, 6, 10, 16, 20, 25, 32, 40A	
Rated operating current( $I_{\Delta n}$ )	15, 30, 100, 300mA	
Leakage dead current( $I_{\Delta no}$ )	$I_{\Delta no} = 0.5 I_{\Delta n}$	
Rated voltage( $U_n$ )	AC 230(240) V	
Residual current off-time	< 0.1s	
Ultimate short-circuit breaking capacity( $I_{cn}$ )	10000A	
Terminal protection	IP20	

### Configuration and Mounting Dimensions



GL018D



GL018U

