

DLF360 Series Residual Current Circuit Breaker

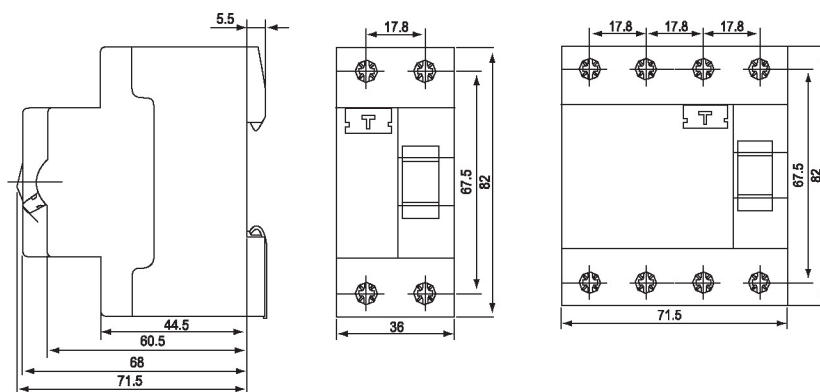
Application

DLF series residual current circuit breaker is applying to the circuit of AC 50/60Hz, for industrial and enterprise, building trade, commerce and family. To mainly prevent electric fire and personal casualty accident caused by personal electric shock or leakage of electric wire netting, this RCCB is a current-operated, fast leakage protector of pure electromagnet type, with can break off fault circuit rapidly in order to avoid occurrence of accident. The item is precise in structure, less elements, without auxiliary power and high overwinding reliability. The function of the switch won't be influenced by ambient temperature and lighting. The mutual inductor of the item is used to test vector differential value of passing current, and produces a relevant output power and add it to the tripper in secondary winding, if the current of vector differential value of protected circuit of personal electric shock is up to or over leakage operating current, the tripper will act and cut off so as that the item will take effect of protection. It is CB approved.

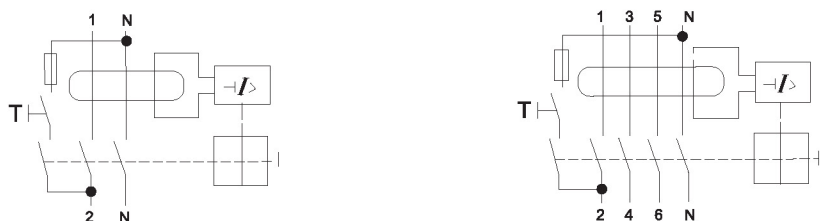
Technical Specification

Poles	2P 4P
Rated voltage(Ue)	AC 50Hz 2P 240V, 4P 240V/415V
Rated current(In)	16, 25, 40, 63A
Rated short-circuit break capacity(I _{nc})	6kA
Leakage motion current(I _{Δn})	30, 100, 300mA
Leakage dead current(I _{Δno})	I _{Δno} = 0.5I _{Δn}

Mounting Dimensions



Configuration



DLF362 2P



DLF364 4P



DLF362 2P



DLF364 4P