

RGBW/RGB/CCT/Dimming 4 Channel LED RF Controller

Model No.: V4-S

4 Channels/ Push Dim/ Wireless remote control/ Auto-transmitting/ Synchronize/ Wall junction box mounting

Features

- RF + Push LED controller, 4 channel constant voltage output.
- Set as single color, dual color, RGB or RGBW controller by DIP switch.
- Match with RF 2.4G single color, dual color and RGB/RGBW remote control.
- One RF controller accept up to 10 remote control.
- 4096 levels 0-100% dimming smoothly without any flash.
- When using with RGB/RGBW light, built in 10 dynamic mode, include jump or gradual change style.
- Auto-transmitting function: Controller automatically transmit signal to another controller with 30m control distance.
- Synchronize on multiple number of controllers.
- Connect with external push switch to achieve on/off and 0-100% dimming function.
- Easy to be placed in standard wall junction box behind a push switch.

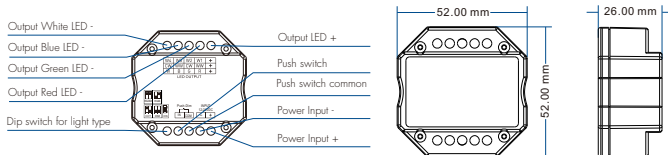


FC CE RoHS (ETC) LVD RED

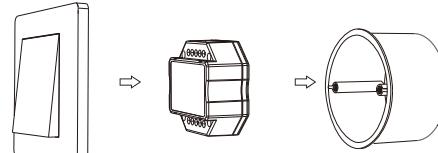
Technical Parameters

| Input and Output | | Safety and EMC | |
|---------------------|------------------|-------------------------|---------------------|
| Input voltage | 12-24VDC | EMC standard (EMC) | EN301 489, EN 62479 |
| Input current | 12.5A | Safety standard (LVD) | EN 60950 |
| Output voltage | 4 x (12-24)VDC | Radio Equipment (RED) | EN 300 328 |
| Output current | 4CH, 3A/CH | Certification | CE, EMC, LVD, RED |
| Output power | 4 x (36-72)W | Environment | |
| Output type | Constant voltage | Operation temperature | Ta: -30°C ~ +55°C |
| Dimming data | | Case temperature (Max.) | Tc: +85°C |
| | | IP rating | IP20 |
| | | Warranty and Protection | |
| | | Warranty | 5 years |
| | | Protection | Reverse Polarity |

Mechanical Structures and Installations

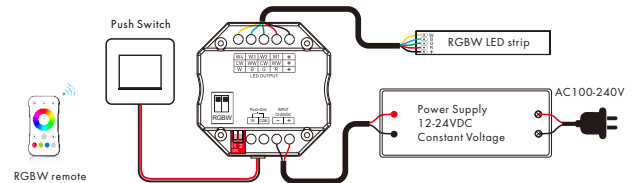


Typical Wall Junction Box Mounting

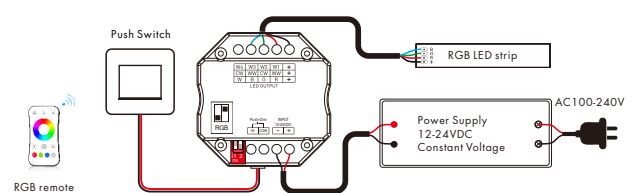


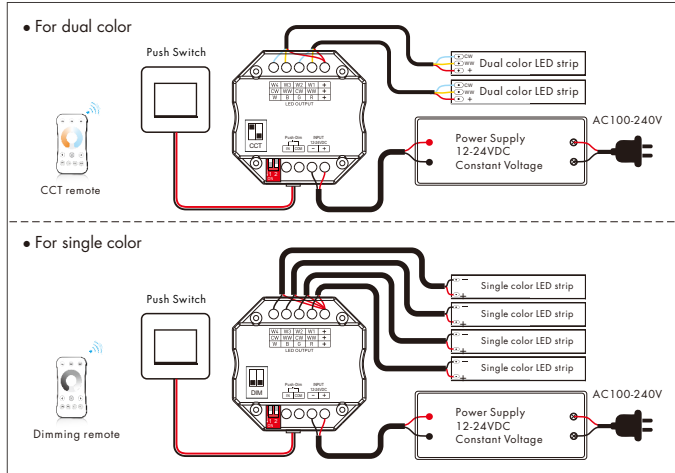
Wiring Diagram

• For RGBW



• For RGB





Push Dim

| | | |
|--------------|--------------------------|---|
| Single color | Click | ON/OFF |
| | Double Click | Turn on at 100% or 10%(night light) and vice-versa |
| | Long press(>1s) from OFF | Dimming UP/DOWN |
| | Long press(>1s) from ON | Dimming UP/DOWN |
| Dual Color | Click | ON/OFF |
| | Double Click | Turn on at 100% or 10%(night light) and vice-versa |
| | Long press(>1s) from OFF | Color temperature UP/DOWN (turn off and turn on to return dimming) |
| | Long press(>1s) from ON | Dimming UP/DOWN |
| RGB | Click | ON/OFF |
| | Double Click | Change from color mode to white mode (RGB mixed) and vice-versa |
| | Long press(>1s) from OFF | If on color mode change rotation speed; If on white mode dimming UP/DOWN |
| | Long press(>1s) from ON | If on color mode start/stop color rotation; If on white mode dimming UP/DOWN |
| RGBW | Click | ON/OFF |
| | Double Click | Change between color mode, white mode(W channel) and color+W mode |
| | Long press(>1s) from OFF | If on color mode change rotation speed; If on white mode or color+W mode, WV dimming UP/DOWN |
| | Long press(>1s) from ON | If on color mode start/stop color rotation; If on white mode or color+W mode, WV dimming UP/DOWN |

Color rotation:



We can select 4 rotation speed:

10 flash/s means 6 seconds color rotation, 5 flash/s means 30 seconds color rotation,
2 flash/s means 1 minute color rotation, 1 flash/s means 6 minutes color rotation.

Match Remote Control (two match ways)

End user can choose the suitable match/delete ways. Two options are offered for selection:

Use the controller's DIP switch

Match:

Change DIP switch setting, immediately short press on/off key (single zone remote) or zone key (multiple zone remote) of the remote.

Use Power Restart

Match:

Switch off the power, then switch on power again, immediately short press on/off key (single zone remote) or zone key (multiple zone remote) 3 times on the remote. The light blinks 3 times means match is successful.

Delete:

Switch off the power, then switch on power again, immediately short press on/off key (single zone remote) or zone key (multiple zone remote) 5 times on the remote. The light blinks 5 times means all matched remotes were deleted.

RGB/RGBW dynamic mode list

| No. | Name | No. | Name |
|-----|---------------------------|-----|-----------------------|
| 1 | RGB jump | 6 | RGB fade in and out |
| 2 | RGB smooth | 7 | Red fade in and out |
| 3 | 6 color jump | 8 | Green fade in and out |
| 4 | 6 color smooth | 9 | Blue fade in and out |
| 5 | Yellow cyan purple smooth | 10 | White fade in and out |

Dual color control

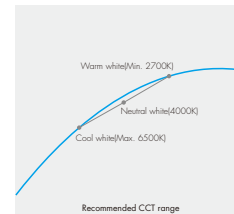
CH1, CH3=Warm white LED

CH2, CH4=Cool white LED

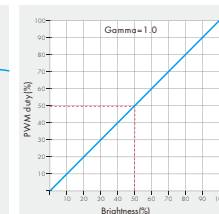
Each channel can supply up to 72W(@24V) and white balance can be controlled as such:

| Color temperature | Cool white | Neutral white | Warm white |
|--------------------|------------------------------------|--------------------------------------|------------------------------------|
| Power distribution | CH1=0W, CH2=72W CH3=0W, CH4=72W | CH1=36W, CH2=36W CH3=36W, CH4=36W | CH1=72W, CH2=0W CH3=72W, CH4=0W |

Linear dual color tuning



Dimming curve for CCT



Dimming curve for RGBW/RGB/DIM

