

DTSY238(E3404)

three phase prepayment kWh meter



E3404



The DTSY238 type three phase prepayment meter is a new type IC card prepayment meter which has such function as power metering, load control and customer information management. It is an ideal product when reforming electric-use system, achieving electrical energy to commercialize, setting charge and adjusting load stage in the power network. It adopt LSI and SMT technology, the key component are long life international brand product.

Basic Function

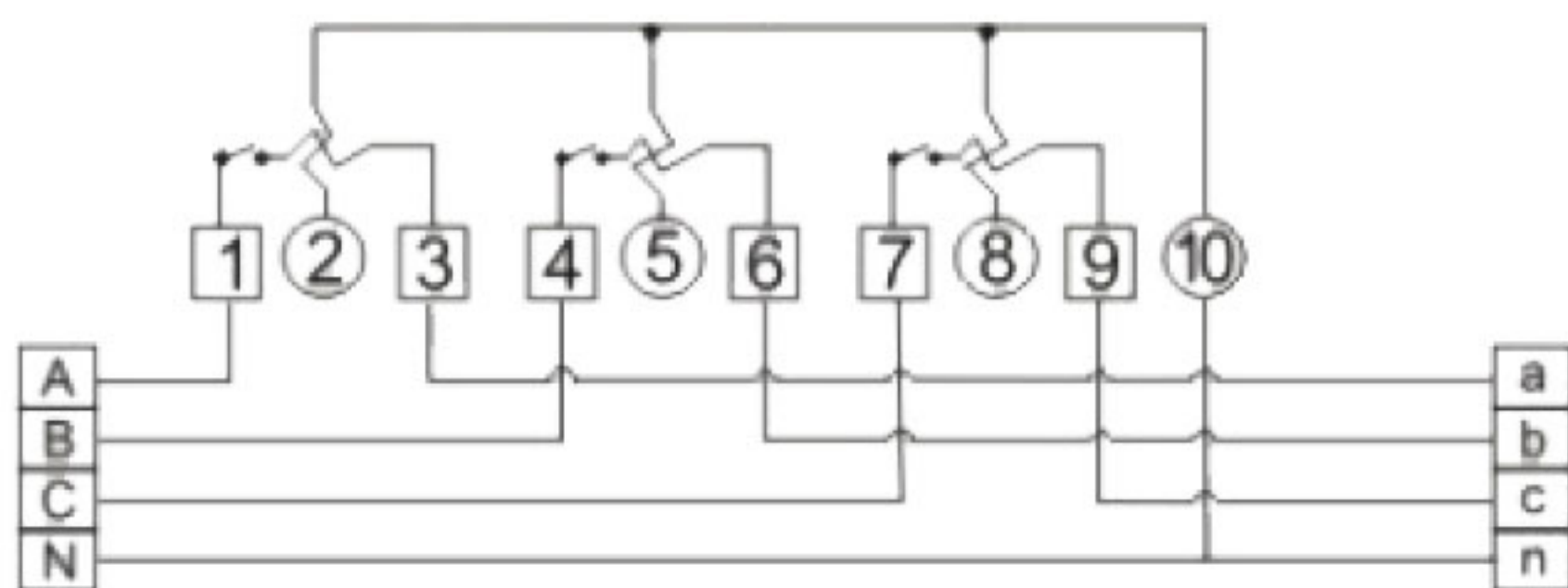
- LCD display 6+2
- Bi-directional total active energy measurement, reverse active energy measure in the total active energy
- Each user responds to a card, well protect from forgery
- Once the electric consumption is used up, it should be cut off automatically
- Auto cut-off for overload
- The IC card power selling control system has the function as power selling and using control
- Pulse LED indicates working of meter, Pulse output with optical coupling isolation

Technical Data

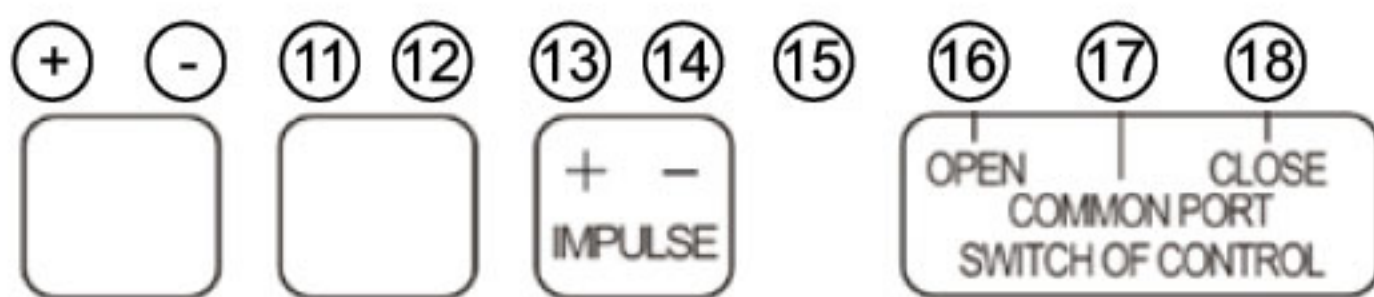
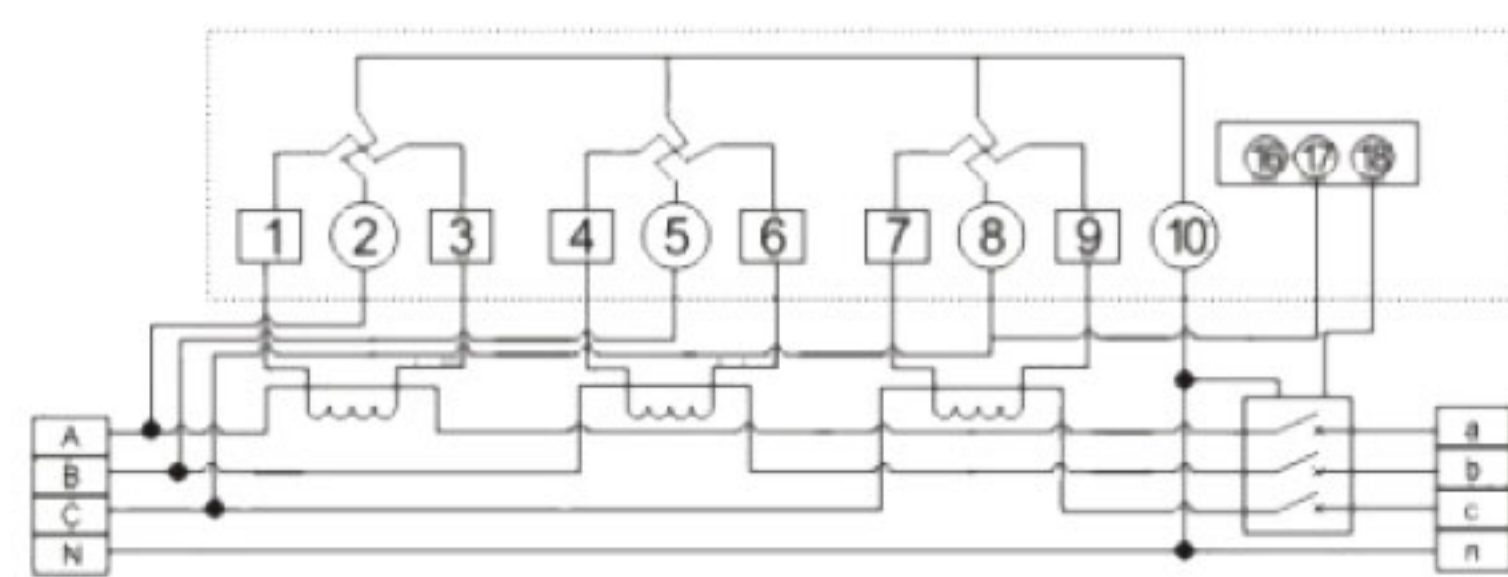
Rate voltage AC	3x120/208V, 3x220/380V, 3x230/400V, 3x240/415V (0.8~1.2Un)		
Rate Current / Frequency	5A/CT ,1.5(6)A ,5(60)A , 10(100)A / 50Hz or 60Hz \pm 10%		
Connection mode	CT or Direct type	Accuracy class	1% or 0.5%
Power consumption	<1W/8VA each phase	Start current	0.004Ib
AC voltage withstand	4000V/25mA for60s	Over current withstand	30Imax for 0.01s
IP grade	IP51	Executive standard	IEC62053-21 IEC62052-11
Work temperature	-30℃ ~ 70℃	Pulse output	Passive pulse, 80 \pm 5 ms

Wire connection

(1)three phase four wire direct connection



(2)three phase four wire through current transformer connection



Outline dimension

