

DDS238 (E1206)

single phase anti-tamper kWh meter



E1206

The meter is designed to measure single phase two wire AC active energy. It adopt LSI and SMT technology, the key component are long life international brand product. It is a long life meter with the advantage of high stability, high over load capability, low power loss and compact size.

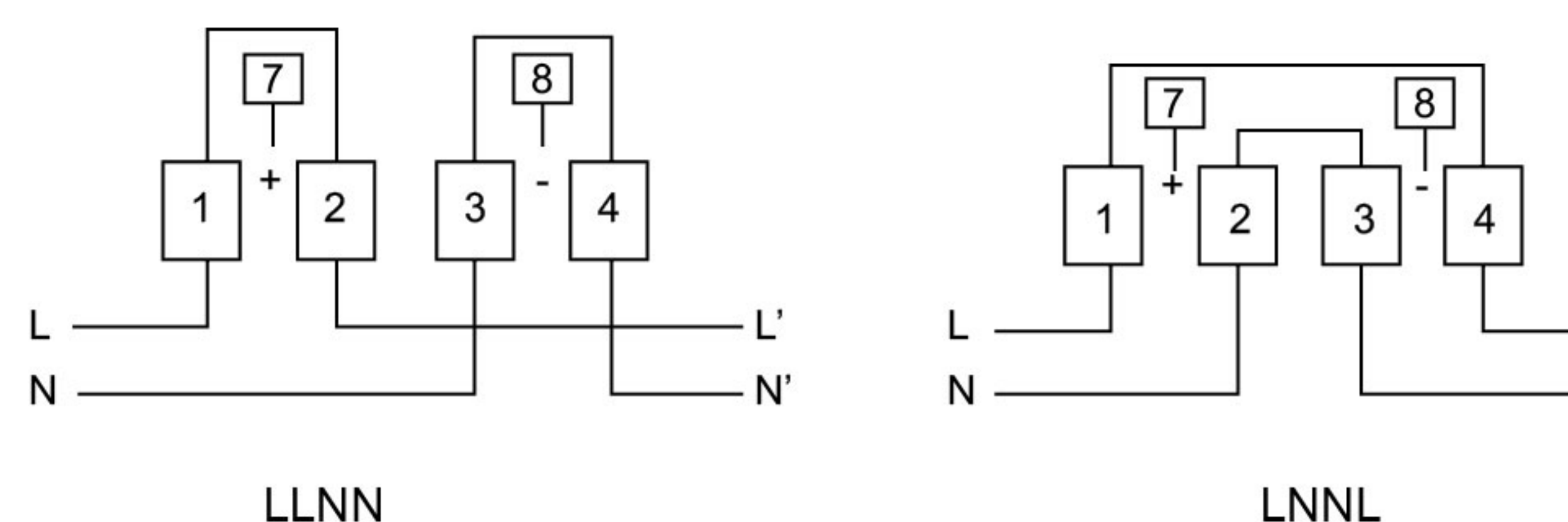
Basic Function

- LCD display 6+2(default) , battery for display when power off
- Bi-directional total active energy measurement, reverse active energy measure in the total active energy
- Anti-tamper function: also measure when connect to earth, bypass, or add resistor in circuit. If phase line and neutral line load is different >12.5%, the meter will measure as the bigger load circuit. The meter can measure when missing neutral line
- There is three LED indication: tamper, reverse, impulse LED.
- Pulse LED indicates working of meter, Pulse output with optical coupling isolation
- Insulated protective-class II, Case protective class IP54 by IEC60529

Technical Data

Rate voltage AC	110V,120V,220V,230,240V (0.8~1.2Un)		
Rate Current / Frequency	5(60)A, 10(100)A / 50Hz or 60Hz \pm 10%		
Connection mode	Direct type	Accuracy class	1% or 0.5%
Power consumption	<1W/10VA	Start current	0.004Ib
AC voltage withstand	4000V/25mA for 60s	Over current withstand	30Imax for 0.01s
IP grade	IP54	Executive standard	IEC62053-21 IEC62052-11
Work temperature	-30℃ ~70℃	Pulse output	Passive pulse, 80 \pm 5 ms

Wire connection



Outline dimension

