

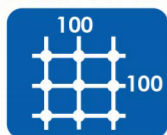
Walter

WELDING TABLES AND CLAMPING SYSTEMS



WALTER'S UNIQUE WELDING WORKSTATION

HOLE PITCH



BEARING



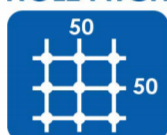
TABLE THICKNESS



VERTICAL SURFACE



HOLE PITCH



BEARING



TABLE THICKNESS



VERTICAL SURFACE



PRODUCT OVERVIEW

01 WELDING TABLE

	28	16
2D/3D welding table	06	07

02 STOPS&BLOCKS

	28	16
Table leg	12	12
U-shape block	13	13
L-shape block	13	13
Welding Protractor	14	14
Angle Protractor	14	14
Stop and Clamping block	15	16
Universal Stop	17	18
Eccentric Stop	17	18
Angle Stop	19	20
Flat Stop	19	20

03 CLAMPS

	28	16
45° screw clamp	21	23
90° screw clamp	21	23
180° screw clamp	21	23
Cantilever screw clamp	21	23
Square clamp	22	24
Disc Clamp	22	24

04 PRISMS&SUPPORTS

	28	16
Prisms	25	25
Screw Support	26	26
Washer set	27	27
Support Block	27	28

05 BOLTS

	28	16
Quick locking Bolt	28	29
Flush Mount Bolt	28	29
Quick Flush Mount Bolt	28	29
PRO Quick locking Bolt		29
Quick locking Bolt with Handle		30
Magnetic Bolt		30
Connecting Bolt		30
Positioning Bolt		30

06 Tools & Equipment

	28	16
Tool Cart		31
Torch holders		31
Hoisting Ring		31
Ground Connection		31
hexagonal wrench		31
steel brush		31
millstone		31
Spray Bottle		31



OUR COMPANY

Professional Manufacturer of Welding Table & Machines in China



Hebei Walter Intelligent Equipment Co., Ltd, with over 25+ years experience in the metal fabrication industry ,boast 160 set machines ,200+ experienced R&D and production team,we boast 100,000 square meter factory.Our main product is welding table and welding table accessories ,which has lowtolerance ,highly accurate ,quickly delivery and customized production is our advantage . Customer satisfaction with the quality of our products is our constant pursuit.We endeavour to provide cost-effective products to saving them financial and time costs.We also committed to providing different types of solutions to bring new product experience to our customers. We do accept low MOQ customized,now we looking for agent all over the world ,we do hope to make cooperate with someone which has passion and experience ,if you want to start a new business ,contact with us ,we will be your best partner.

PRODUCTION CAPACITY

WE HAVE A STRONG MANUFACTURING CAPACITY WITH FIXED ASSETS OF MORE THAN 60 MILLION.

Medium Frequency Furnace 2. 5T&5T

16 sets

Casting machinery and equipment

80 sets

Emission spectrometer PDA-7000
Coordinate measuring machine
Inspection and testing equipment

18 sets

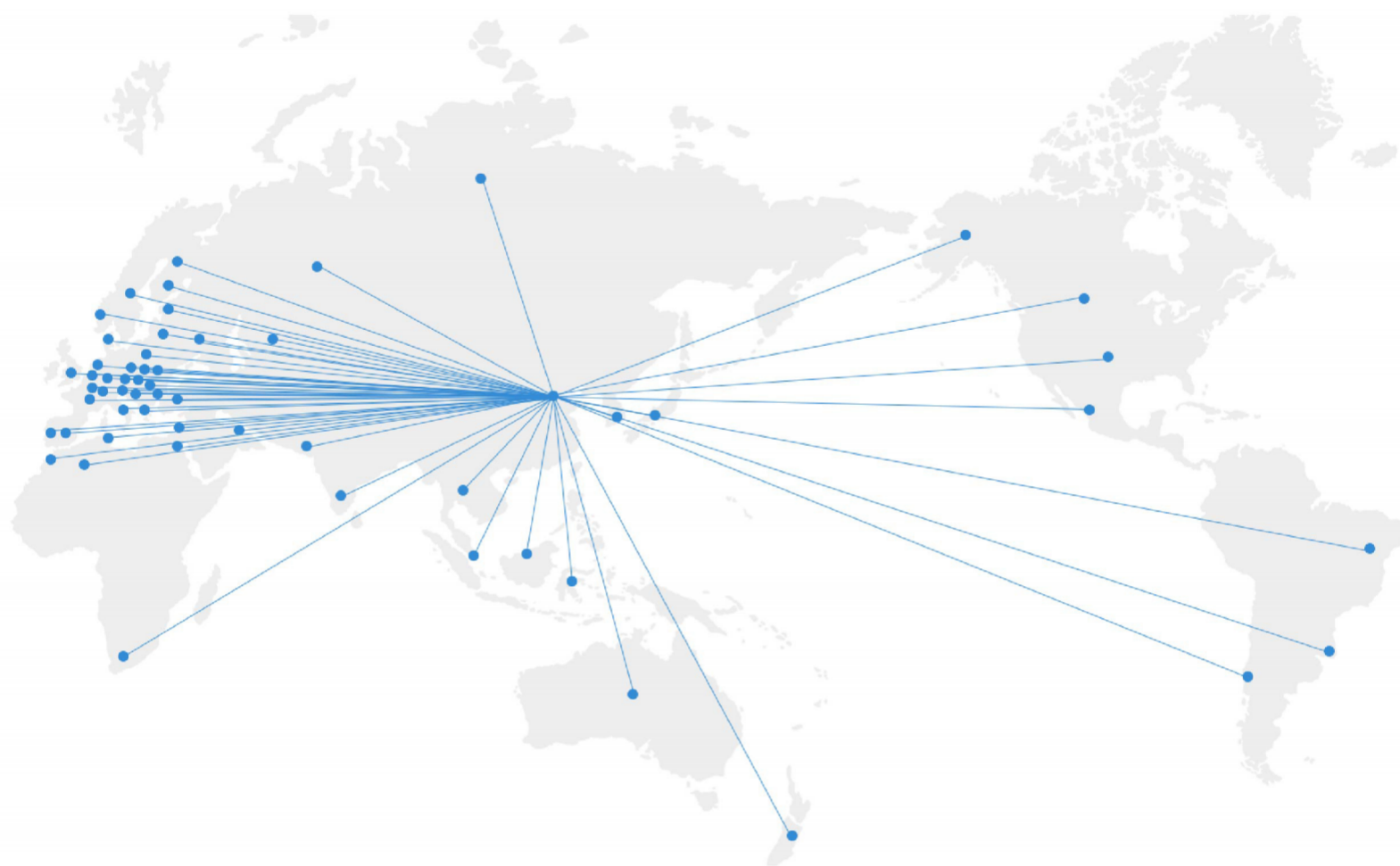
Commissioning equipment for large
pressesHigh-speed CNC machining
centres, boring,turning, milling and
grinding machines

150 sets

WE SUPPLY GLOBALLY

A significant factor in our success is our close partnership with distributors.

In over 50 countries, workers and factories rely on Walter products for their daily production.



Egypt	Estonia	Kazakhstan	Netherlands	Serbia	Tunisia
Algeria	Finland	Croatia	Norway	Singapore	Turkey
Australia	France	Latvia	Austria	Slovakia	Ukraine
Belgium	Greece	Liechtenstein	Pakistan	Slovenia	Hungary
Bosnia and Herzegovina	India	Lithuania	Poland	Spain	Uruguay
Brazil	Indonesia	Luxembourg	Portugal	South Africa	United States
Bulgaria	Israel	Malaysia	Romania	South Korea	United Arab Emirates
Chile	Italy	Morocco	Russia	Thailand	United Kingdom
Germany	Japan	Mexico	Sweden	Czech Republic	Belarus
Denmark	Canada	New Zealand	Switzerland		

D28 SERIES WELDING TABLE

3D/2D welding table



D28 series	3D welding table		2D welding table
size(mm)	Cast iron	Steel	Steel
1000×1000×200	WTC28001	WTS28001	WTS282D001
1500×1000×200	WTC28002	WTS28002	WTS282D003
1200×1200×200	WTC28003	WTS28003	WTS282D002
1200×1000×200	WTC28004	WTS28004	customize
1500×1500×200	WTC28005	WTS28005	WTS282D004
2000×1000×200	WTC28006	WTS28006	WTS282D005
2000×1500×200	WTC28008	WTS28007	customize
2400×1200×200	WTC28007	WTS28008	WTS282D006
3000×1500×200	WTC28009	WTS28009	WTS282D007
3000×2000×200	WTC280010	WTS280010	customize
4000×2000×200	WTC280011	WTS280011	customize
Custom Sizes Available			

D16 SERIES WELDING TABLE

3D/2D welding table



D16 series	3D welding table		2D welding table
size(mm)	Cast iron	Steel	Steel
1000×1000×100	WTC16001	WTS16001	WTS162D001
1500×1000×100	WTC16002	WTS16003	WTS162D003
1200×1200×100	WTC16003	WTS16002	WTS162D002
1200×1000×100	WTC16004	WTS16004	customize
1500×1500×100	WTC16005	WTS16005	WTS162D004
2000×1000×100	WTC16006	WTS16006	WTS162D005
2000×1500×100	WTC16008	WTS16007	customize
2400×1200×100	WTC16007	WTS16008	WTS162D006
3000×1500×100	WTC16009	WTS16009	WTS162D007
Custom Sizes Available			

3D/2D WELDING TABLE

01 Unique materials developed by us

Our material development has already received awards.

- high basic hardness
- improved nitriding results
- improved dimensional stability

03 Radiused boreholes + standard 45°holes

Customize flexibly to meet different customer needs.

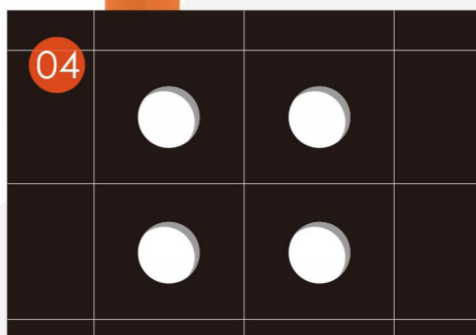
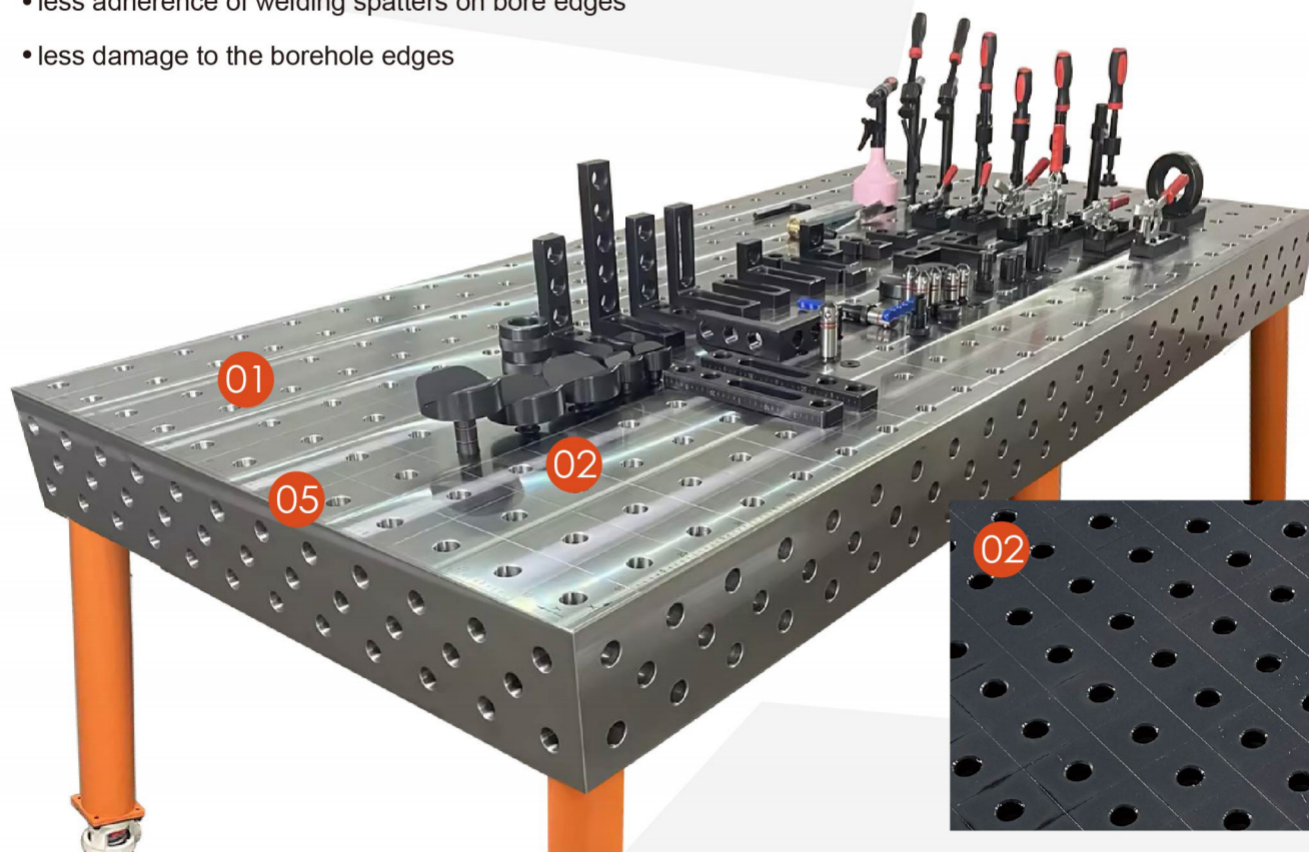
- easier insertion of bolts and accessories
- less adherence of welding spatters on bore edges
- less damage to the borehole edges

02 Surface

- precisely milled surface
- reduced maintenance effort and improved corrosion protection through plasma nitriding

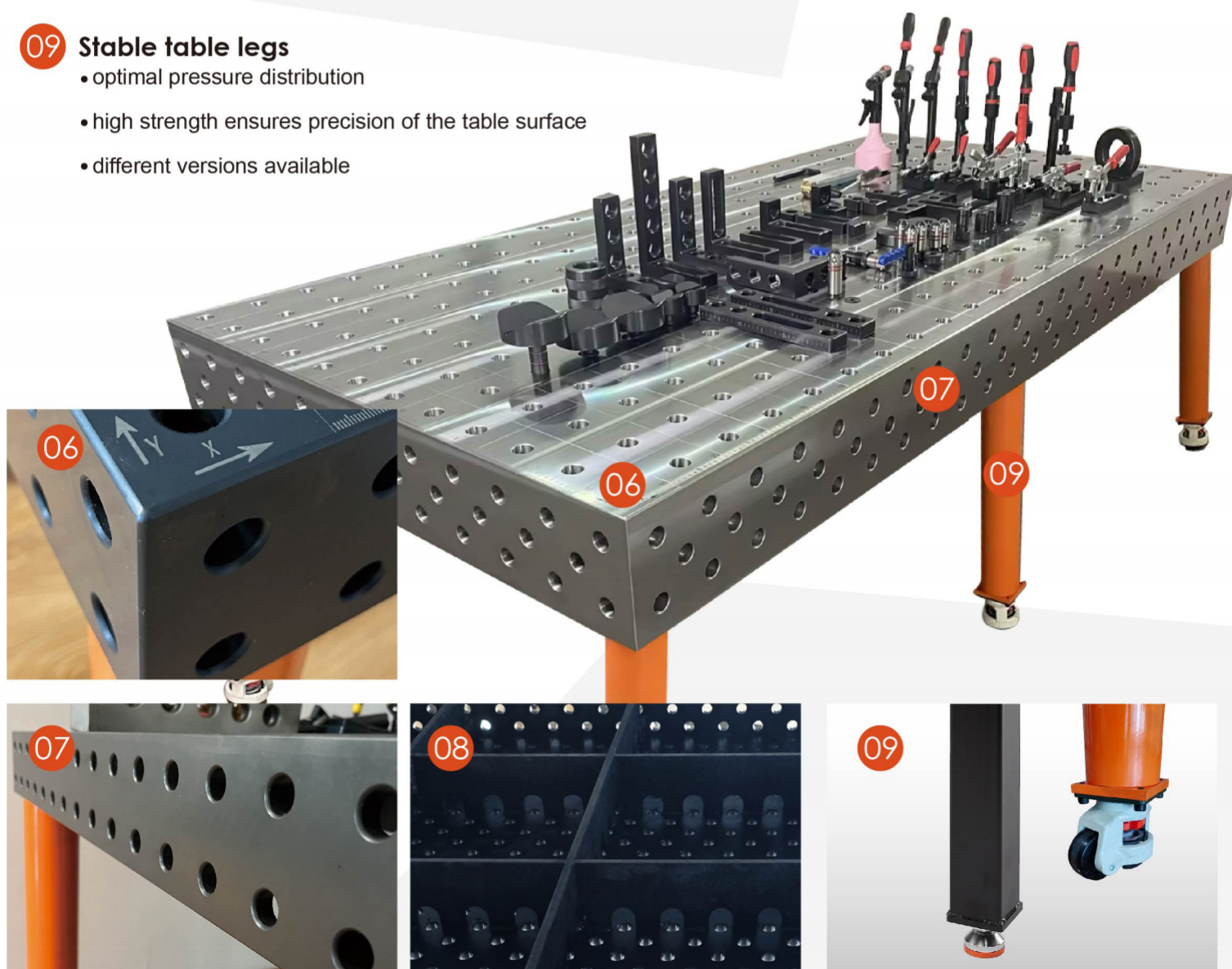
04 Grid lines

- continuous lines for better orientation at a distance of 50 mm (System 16) or 100 mm (System 28)
- enable precise clamping

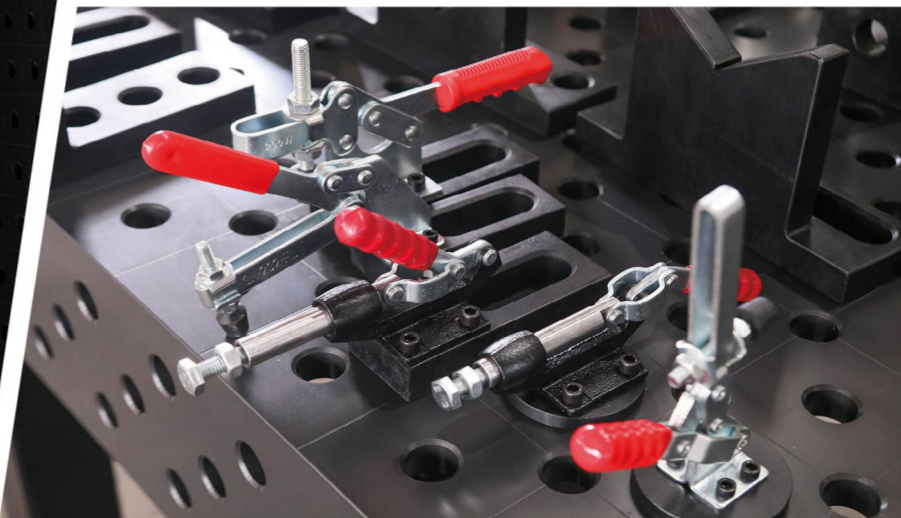
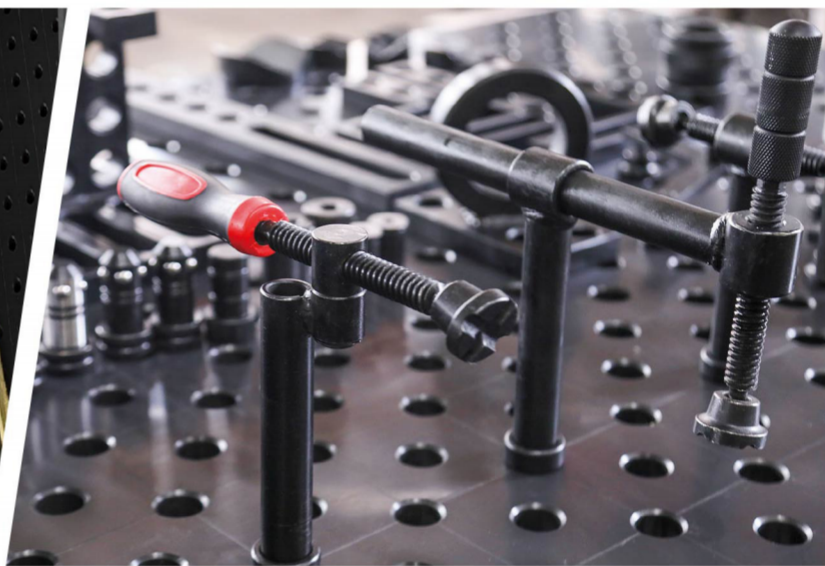


3D/2D WELDING TABLE

- 05 Scale**
 - scaling on all four sides
 - saves time when clamping and setting up
- 06 Elaborate radiuses**
 - radiused edges and corners
 - reduce the risk of injury
 - protect components and accessories from getting damaged
- 07 Table side panel**
 - additional clamping surface
 - for extending and connecting tables
- 08 Ribbing**
 - for optimum stability and rigidity of the table top
 - for all table series and sizes
- 09 Stable table legs**
 - optimal pressure distribution
 - high strength ensures precision of the table surface
 - different versions available



APPLICATION



APPLICATION

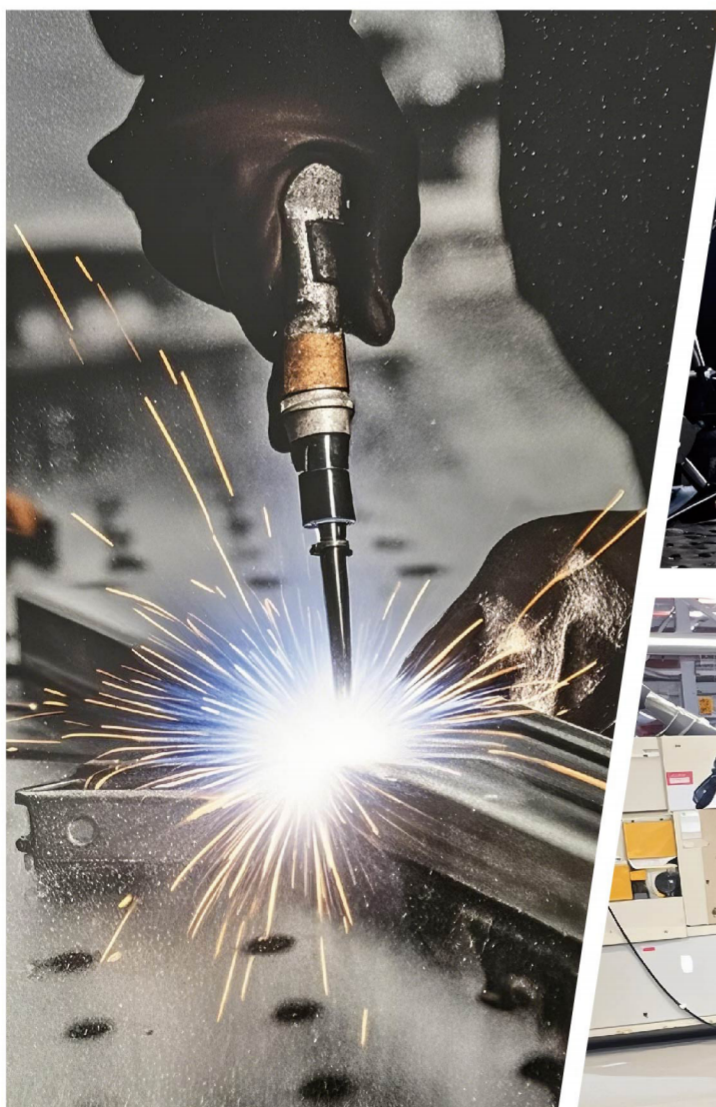


TABLE LEG

table Leg—D28 Series

Product	Size(mm)	Item no.	Weight(kg)
Standard Leg	φ89×350	WTL001	7.2
	φ89×450	WTL002	9.9
	φ89×620	WTL003	10.8
Wheel leg	φ89×350	WTL004	10
	φ89×450	WTL005	11.4
	φ89×620	WTL006	13.6

table Leg—D16 Series

Product	Size(mm)	Item no.	Weight(kg)
Standard Leg	φ89×350	WTL001	7.2
	φ89×450	WTL002	9.9
	φ89×620	WTL003	10.8
Wheel leg	φ89×350	WTL004	10
	φ89×450	WTL005	11.4
	φ89×620	WTL006	13.6



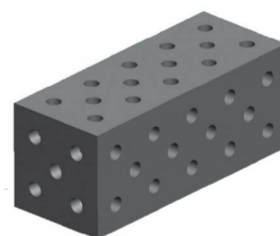
Standard Leg

Wheel leg

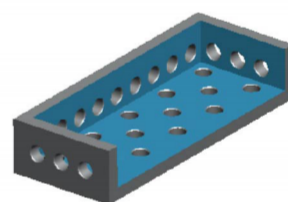
STOPS & BLOCKS

U/L-shape block—D28 Series

Product	Size(mm)	Item no.	Weight(kg)
U Square box (steel)	500×200×200	WTAU28001	54
	1000×200×200	WTAU28002	101
	1500×200×200	WTAU28003	151
	2000×200×200	WTAU28004	197
	3000×200×200	WTAU28005	233
L Square box (steel)	500x200x100	WTAL28001	27
	1000x200x100	WTAL28002	50
	1200x200x100	WTAL28003	59
	1500x200x100	WTAL28004	76
	2000x200x100	WTAL28005	97



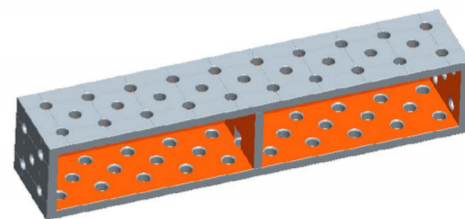
U-shape block



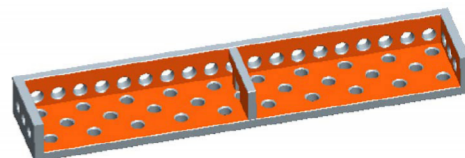
L-shape block

U/L-shape block—D16 Series

Product	Size(mm)	Item no.	Weight(kg)
U Square box (steel)	200x100x100	WTAU16001	6
	300x100x100	WTAU16002	9
	500x100x100	WTAU16003	13
L Square box (steel)	200x100x50	WTAL16001	4
	300x100x50	WTAL16002	5
	500x100x50	WTAL16003	7



U-shape block



L-shape block

STOPS & BLOCKS

Angle Protractor—D28 Series

Size(mm)	Item no.	Weight(kg)
500x100x100	WTAD28001	22



Angle Protractor—D16 Series

Size(mm)	Item no.	Weight(kg)
250x50x50	WTAD16001	3



Welding Protractor



Size(mm)	Item no.	Weight(kg)
250x150x25	WTPAR28001	0

The angle adjustment disc provides precise angle adjustment in two ways: either in 10-degree increments or continuously from 0 to 90 degrees, with accuracy to 1 degree.

STOPS & BLOCKS

Stop and Clamping block—D28 Series

- 1.Fixed on the surface of the platform can be used as a common support member.
- 2.Locked on the side of the platform can be used as a platform to expand the width.
- 3.Flat on the platform surface and side can be used as a large positioning piece.

Size(mm)	Item no.	Weight(kg)
300×275×100	WTSA282D001 Left	13
300×275×100	WTSA282D001 Right	13



Stop and Clamping Block 300

Size(mm)	Item no.	Weight(kg)
600×375×100	WTSA282D002LEFT	23
600×375×100	WTSA282D002RIGHT	23



Stop and Clamping Block 600

Size(mm)	Item no.	Weight(kg)
800×375×100	WTSA282D003Left	29
800×375×100	WTSA282D003Right	29



Stop and Clamping Block 800

STOPS & BLOCKS

Stop and Clamping block—D16 Series

- 1.Fixed on the surface of the platform can be used as a common support member.
- 2.Locked on the side of the platform can be used as a platform to expand the width.
- 3.Flat on the platform surface and side can be used as a large positioning piece.

Size(mm)	Item no.	Weight(kg)
200x150x50	WTSA162D001 Left	2.5
200x150x50	WTSA162D001 Right	2.5



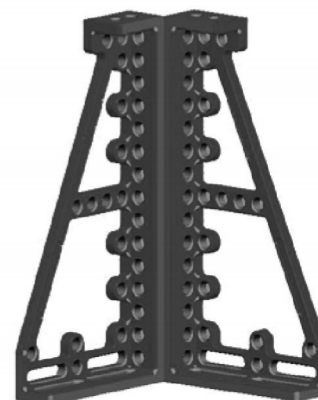
Stop and Clamping Block 200

Size(mm)	Item no.	Weight(kg)
400x200x50	WTSA162D002LEFT	5
400x200x50	WTSA162D002RIGHT	5



Stop and Clamping Block 400

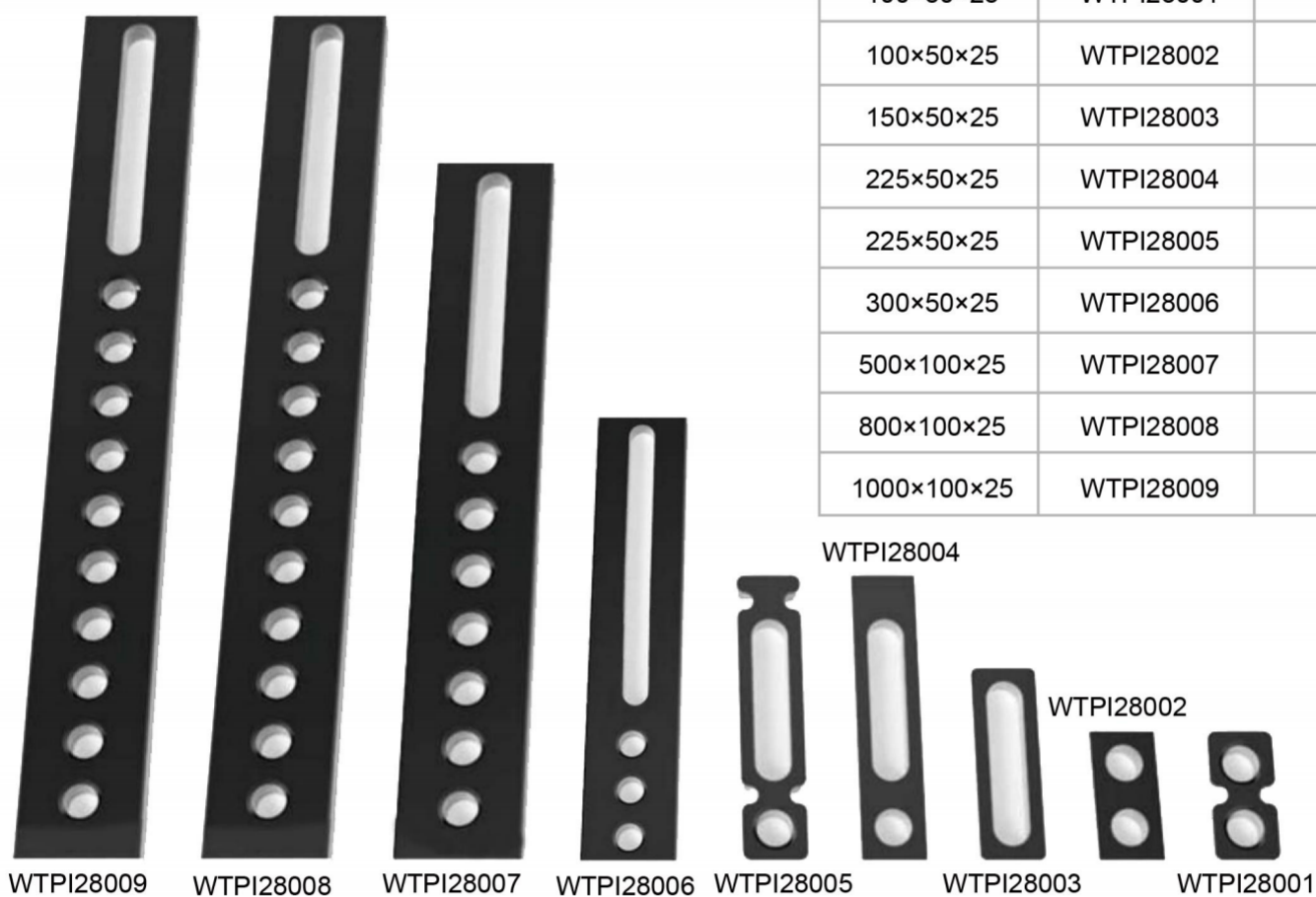
Size(mm)	Item no.	Weight(kg)
600x200x50	WTSA162D003Left	7
600x200x50	WTSA162D003Right	7



Stop and Clamping Block 600

STOPS & BLOCKS

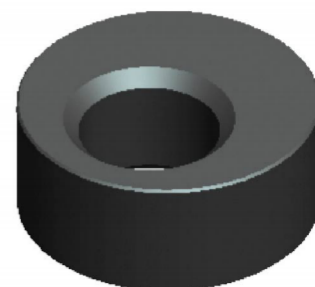
Universal Stop—D28 Series



Size(mm)	Item no.	Weight(kg)
100×50×25	WTPI28001	0.8
100×50×25	WTPI28002	0.8
150×50×25	WTPI28003	1.0
225×50×25	WTPI28004	2.0
225×50×25	WTPI28005	2.0
300×50×25	WTPI28006	2.2
500×100×25	WTPI28007	5.8
800×100×25	WTPI28008	9.0
1000×100×25	WTPI28009	12.0

Eccentric Stop—D28 Series

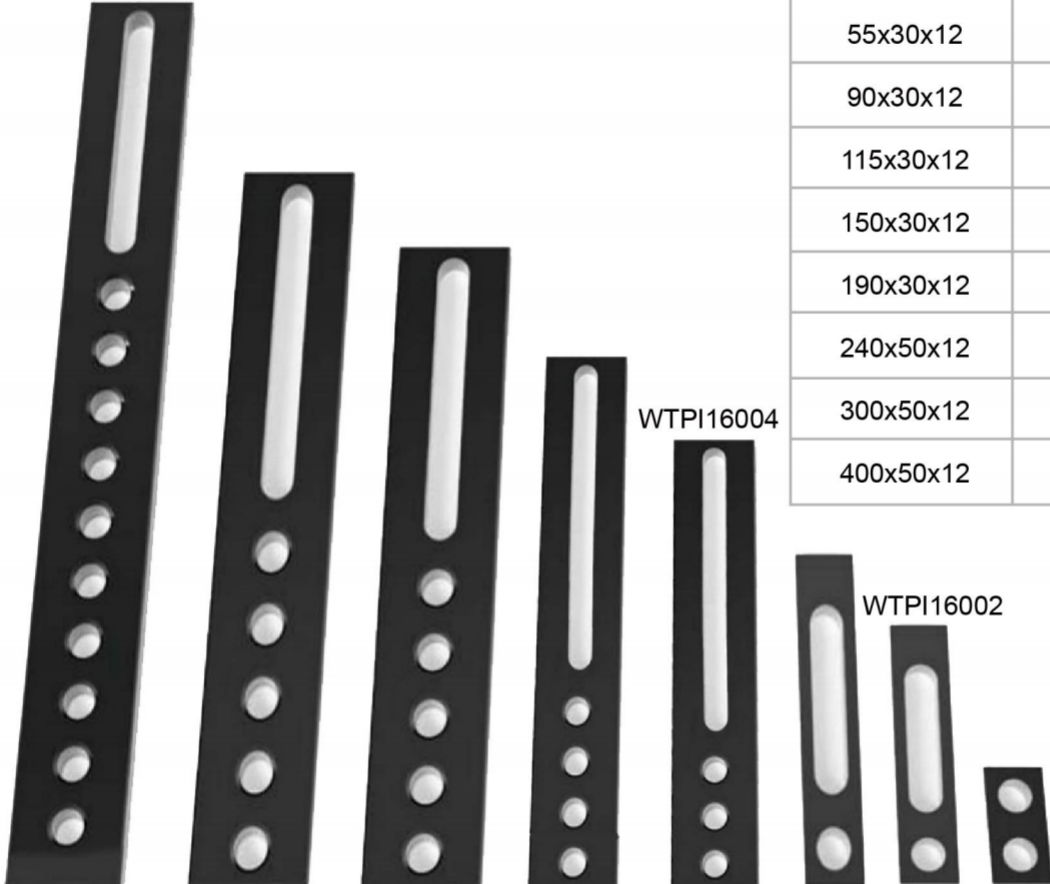
Size(mm)	Item no.	Weight(kg)
φ 75x50x25	WTEP28001	0.5
φ 100x75x25	WTEP28002	1.5



STOPS & BLOCKS

Universal Stop—D16 Series

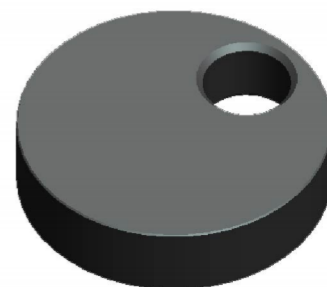
Size(mm)	Item no.	Weight(kg)
55x30x12	WTPI16001	0.10
90x30x12	WTPI16002	0.12
115x30x12	WTPI16003	0.15
150x30x12	WTPI16004	0.20
190x30x12	WTPI16005	0.25
240x50x12	WTPI16006	1.0
300x50x12	WTPI16007	1.6
400x50x12	WTPI16008	1.9



WTPI16008 WTPI16007 WTPI16006 WTPI16005 WTPI16004 WTPI16003 WTPI16002 WTPI16001

Eccentric Stop—D16 Series

Size(mm)	Item no.	Weight(kg)
φ 25x50x12	WTEP16001	0.45
φ 50x75x12	WTEP16002	1.50



STOPS & BLOCKS

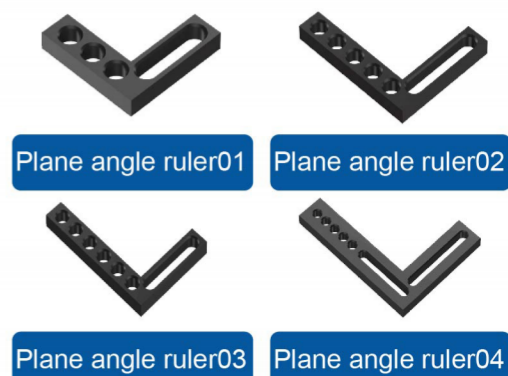
Angle Stop—D28 Series



Size(mm)	Item no.	Weight(kg)
75×75×50	WTPA28005	1.50
175×75×50	WTPA28004	2.00
175×175×50 (bore/bore)	WTPA28001	2.50
175×175×50 (bore/oblong)	WTPA28003	2.20
175×175×50 (oblong/bore)	WTPA28002	1.85
225×200×125×50	WTPA28007	2.80
275×175×50	WTPA28006	3.00

Flat Stop—D28 Series

Product	Size(mm)	Item no.	Weight(kg)
Plane angle ruler 01	175x175x25	WTPAR28002	2
Plane angle ruler 02	275x175x25	WTPAR28003	2.6
	275x225x25	WTPAR28004	3
Plane angle ruler 03	325x225x25	WTPAR28004	3.5
Plane angle ruler 04	500x375x25	WTPAR28005	12



STOPS & BLOCKS

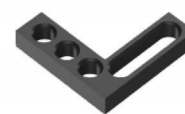
Angle Stop—D16 Series



Size(mm)	Item no.	Weight(kg)
40x30x40	WTPA16001	0.13
90x40x30	WTPA16002	0.15
90x30x90	WTPA16003	0.28
90x30x90	WTPA16004	0.20
90x30x90	WTPA16005	0.24
140x30x90	WTPA16006	0.32

Flat Stop—D16 Series

Product	Size(mm)	Item no.	Weight(kg)
Plane angle ruler 01	105x105x12	WTPAR16001	0.17
Plane angle ruler 02	130x130x12	WTPAR16002	1.60
Plane angle ruler 03	180x155x12	WTPAR16003	2.00
Plane angle ruler 04	275x200x12	WTPAR16004	2.50



Plane angle ruler01



Plane angle ruler02



Plane angle ruler03



Plane angle ruler04

CLAMPS

screw clamp—D28 Series

Product	Size(mm)	Item no.	Weight(kg)
Cantilever screw clamp	300x150	WTCL28001	2.5
	300x200	WTCL28002	2.5



Product	Size(mm)	Item no.	Weight(kg)
180° screw clamp	300x300	WTCL28003	2.5
	300x300	WTCL28004	2.5
90° screw clamp	300x150	WTCL28005	1.8
	300x150	WTCL28006	1.8
45° screw clamp	300x300	WTCL28007	2.5
	300x300	WTCL28008	2.5



WTCL28003



WTCL28004



WTCL28005



WTCL28006



WTCL28007

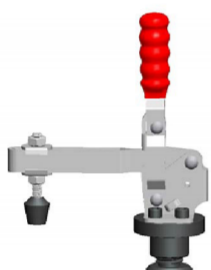


WTCL28008

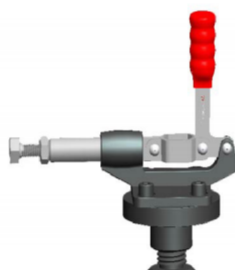
CLAMPS

screw clamp—D28 Series

Product	Size(mm)	Item no.	Weight(kg)
Disc Vertical Quick Clamp	φ58x20x28	WTCL28009	2.5
Disc Push-Pull Quick Clamp	φ68x20x28	WTCL280010	2.5
Disc Horizontal Quick Clamp	φ68x20x28	WTCL280011	1.8
Square vertical quick clamp	130x65x25	WTCL280012	1.8
Square Push-Pull Quick Clamp	130x65x25	WTCL280013	2.5
Square Horizontal Quick Clamp	130x50x25	WTCL280014	2.5



WTCL28009



WTCL280010



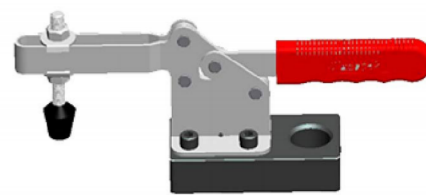
WTCL280011



WTCL280012



WTCL280013



WTCL280014

CLAMPS

screw clamp—D16 Seriesr

Product	Size(mm)	Item no.	Weight(kg)
Compensating screw clamp	120x200	WTCL16001	2.5
	120x200	WTCL16002	2.5



WTCL16001

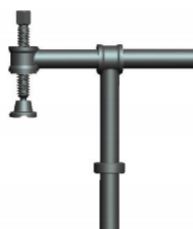


WTCL16001

Product	Size(mm)	Item no.	Weight(kg)
180° screw clamp	160x200	WTCL16003	1.5
	160x200	WTCL16004	1.5
90° screw clamp	160x200	WTCL16005	1.0
45° screw clamp	160x200	WTCL16006	1.5
	160x200	WTCL16007	1.5



WTCL28003



WTCL28004



WTCL28005



WTCL28006

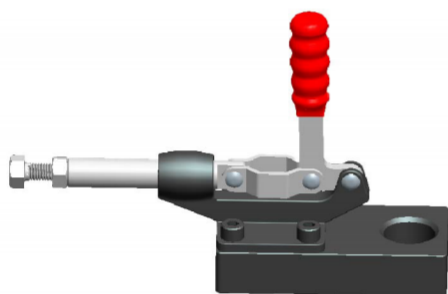


WTCL28007

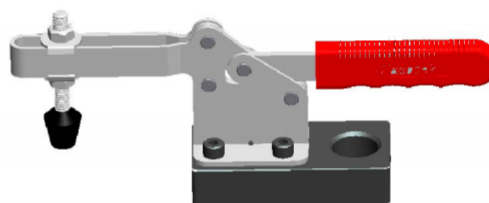
CLAMPS

screw clamp—D16 Seriesr

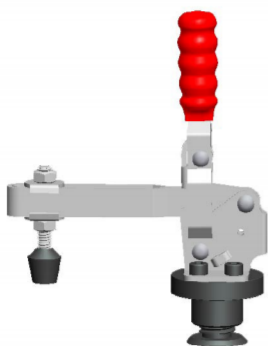
Product	Size(mm)	Item no.	Weight(kg)
Square disc vertical quick clamp	BC-305-EM/304-EM	WTCL16008	1.0
Square disc horizontal quick clamp	BC-200-WL	WTCL16009	1.3
Disc Vertical Quick Clamp	BC-12132	WTCL160010	0.6
Disc Push-Pull Quick Clamp	BC-305-CM/304-CM	WTCL160011	0.6
Disc horizontal quick clamp	BC-12130	WTCL160012	1.0



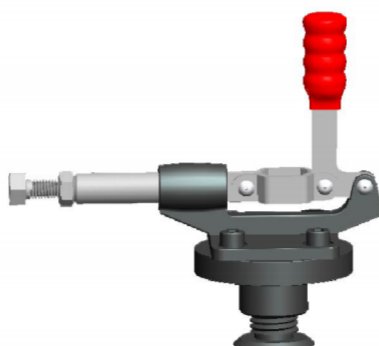
WTCL16008



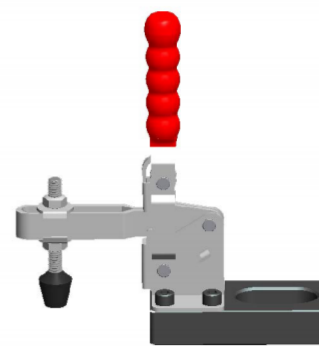
WTCL16009



WTCL160010



WTCL160011

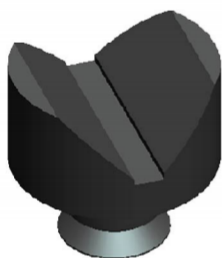


WTCL160012

PRISMS&SUPPORTS

Prisms—D28 Series

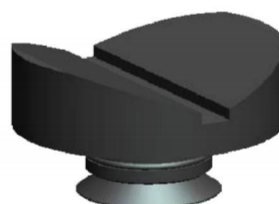
Size(mm)	Item no.	Weight(kg)
$\varnothing 58 \times 90^\circ$	WTVP28001	2.1
$\varnothing 108 \times 120^\circ$	WTVP28003	3.7
$\varnothing 138 \times 150^\circ$	WTVP28006	5.2



WTVP28001



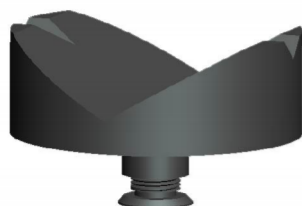
WTVP28003



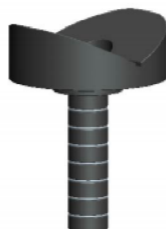
WTVP28006

Prisms—D16 Series

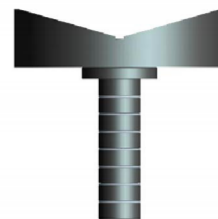
Size(mm)	Item no.	Weight(kg)
$\varnothing 48 / 130^\circ$	WTVP16001	0.3
$\varnothing 65 / 130^\circ$	WTVP16002	3.0
$\varnothing 80 / 130^\circ$	WTVP16003	3.2



WTVP16001



WTVP16002



WTVP16003

PRISMS&SUPPORTS

Screw Support—D28 Series

Size(mm)	Item no.	Weight(kg)
φ80x100	WTHR28001	2.5

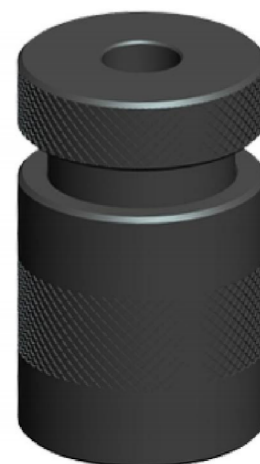
Support continuously adjustable from 75 to 95 mm,
Especially well suited for V-block locations with
arbourFor direct insertion in the adjustable spacer,
Stops etc.with PC-bolt can also be clamped in the
system bore.



Screw Support—D16 Series

Size(mm)	Item no.	Weight(kg)
φ48x60-90	WTHR16001	1.2

Support continuously adjustable from 75 to 95 mm,
Especially well suited for V-block locations with
arbourFor direct insertion in the adjustable spacer,
Stops etc.with PC-bolt can also be clamped in the
system bore.



PRISMS&SUPPORTS

Washer set

Size(mm)	Item no.
0.5-40mm	WTCAG28001



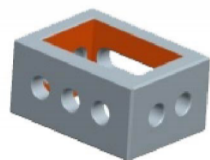
WTCAG28001

Size(mm)	Item no.
1、2、2.5、3、4、5 10、20、40、50+L125	WTCAG16001

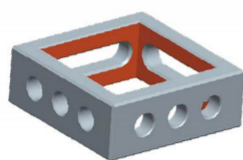


WTCAG16001

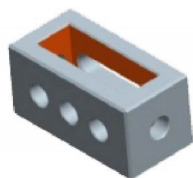
Support Block—D28 Seriesr



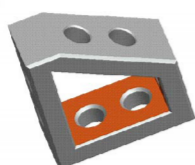
FRAME SUPPORT



FRAME SUPPORT



FRAME SUPPORT



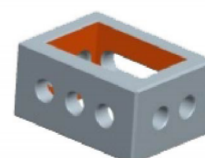
BRACKETS

Product	Size(mm)	Item no.	Weight(kg)
Frame support	200x200x75	WTFS28001	8.24
	200x150x75	WTFS28002	7.30
	200x100x75	WTFS28003	6.09
	200x200x100	WTFS28004	11.68
	200x150x100	WTFS28005	10.27
	200x100x100	WTFS28006	8.54
Brackets	150x150x75x30°	WTB28001	5.62
	150x150x75x45°	WTB28002	5.56

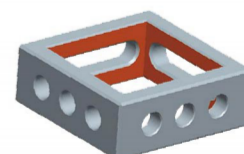
PRISMS&SUPPORTS

Support Block—D16 Series

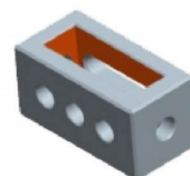
Product	Size(mm)	Item no.	Weight(kg)
Frame support	200x200x50	WTFS16001	8.24
	200x150x50	WTFS16002	7.30
	200x100x50	WTFS16003	6.09
	200x200x50	WTFS16004	11.68
	200x150x50	WTFS16005	10.27
	200x100x50	WTFS16006	8.54
Brackets	150x150x50x30°	WTB16001	5.62
	150x150x50x45°	WTB16002	5.56



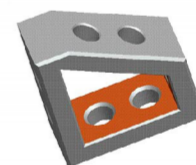
FRAME SUPPORT



FRAME SUPPORT



FRAME SUPPORT



BRACKETS

Locking Pin—D28 Series

Product	Size(mm)	Item no.	Weight(kg)
Quick locking pin	φ28x50	WTLP28001	0.25
	φ28x75	WTLP28002	0.36
Countersunk head locking pin	φ28x50	WTLP28003	0.25
	φ28x75	WTLP28004	0.36
Countersunk head quick locking pin	φ28x50	WTLP28005	0.25
	φ28x75	WTLP28006	0.36



Quick locking Bolt



Flush Mount Bolt



Quick Flush Mount Bolt

BOLTS

Locking Pin—D16 Series

Product	Size(mm)	Item no.	Weight(kg)
Quick locking pin	$\phi 16 \times 24$	WTLP16001	0.10
	$\phi 16 \times 36$	WTLP16002	0.15
Countersunk head locking pin	$\phi 16 \times 24$	WTLP16003	0.00
	$\phi 16 \times 36$	WTLP16004	0.00
Countersunk head quick locking pin	$\phi 16 \times 24$	WTLP16005	0.20
	$\phi 16 \times 36$	WTLP16006	0.25



WTLP16001



WTLP16002



WTLP16003/4



WTLP16005



WTLP16006

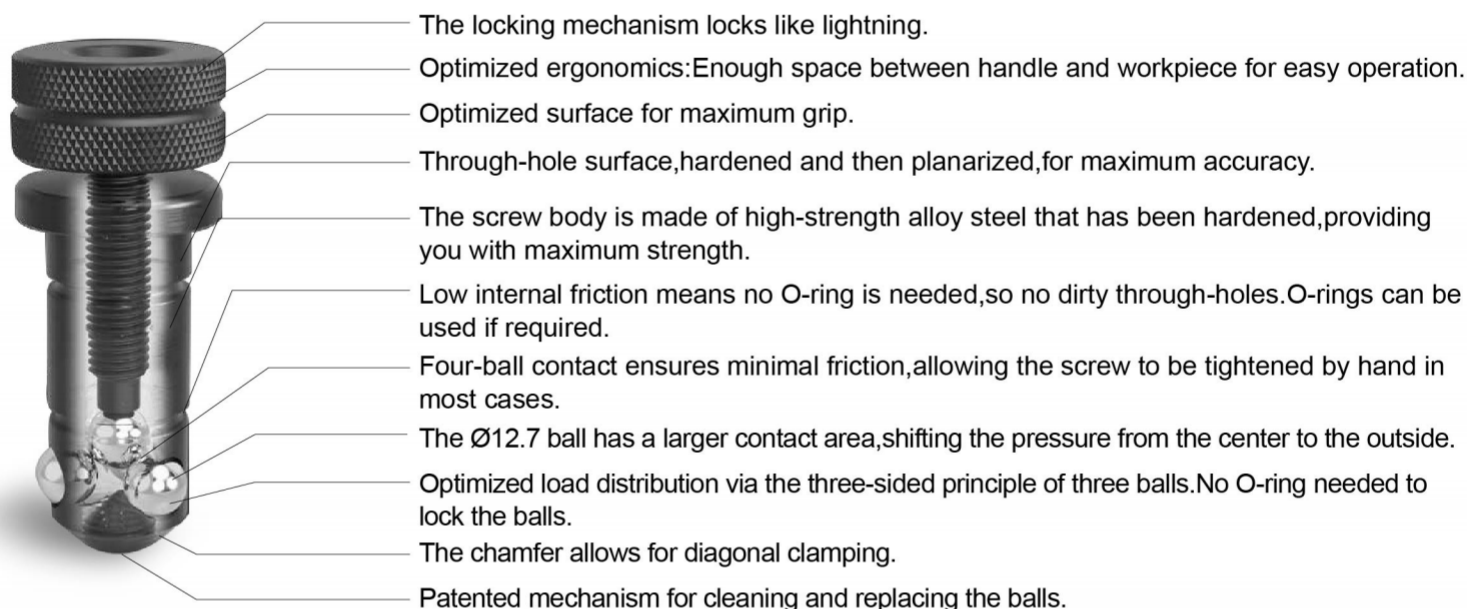
PRO Quick locking Bolt

Size(mm)	long(mm)	Weight(kg)
$\phi 28$	100	0.60
$\phi 28$	125	0.70



BOLTS

PRO Quick locking Bolt



Quick locking Bolt with Handle



Magnetic Bolt



Connecting Bolt



Positioning Bolt

TOOLS & EQUIPMENT

Tools & Equipment



Tool Cart



Torch holders



Hoisting Ring



Ground Connection



hexagonal wrench



steel brush

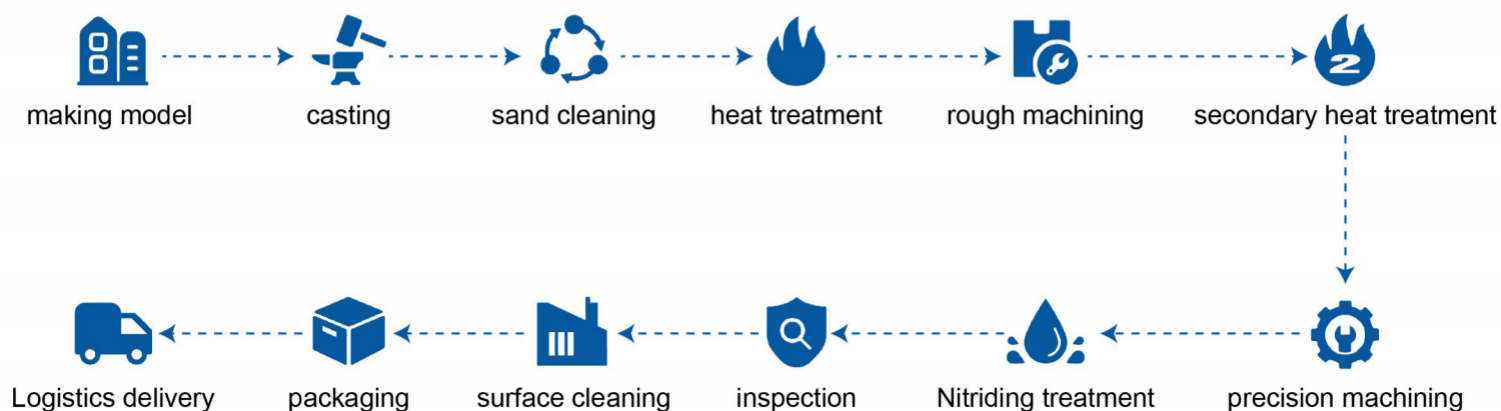


millstone



Spray Bottle

Poduction Process





Walter


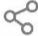




wolter.en.alibaba.com

The walter configurator allows you to design and implement your welding and clamping construction. Plan your next setup with little effort -quickly, easily and intuitively.

- Start your project by choosing a walter welding table.
- Load your component into the walter configurator via the import.
- Clamp your component with the necessary accessories and see the parts list.



advantages

-  Diverse products
-  Share projects
-  Design templates
-  Augmented Reality
-  Cloud synchronization
-  Video tutorials



Tel: +86 19031711944

Email: john@iwalter.cn

Whatsapp: +86 19031711944