

AVANTI®



AVANTI®

GARAGE
DOOR OPENERS





Advantage **AVANTI!**

Garage door automation has experienced a remarkable evolution in recent years. However, it has been a period full of growing pains. To meet the ever-increasing demands of a discerning market while at the same time addressing commercial viability, ease of installation, servicing and a host of other considerations, has presented the industry with challenges previously too great to conquer.

So, we are proud to announce the arrival of a new star on the horizon. Introducing AVANTI - the culmination of years of research, together with the fine-tuning of the latest in technological advancement. Innovators of unique patented door automation technology, combined with over 25 years of industry experience, AVANTI represents the future of the garage door opener.

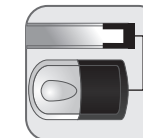
We at AVANTI are dedicated to garage door openers. After all, that's all we make! From the controlled manufacturing process, through our streamlined distribution networks, installer friendliness and a host of advantages for the end user, AVANTI really closes the door on the opposition.

Unparalleled Versatility

● 3 Different Control Box Mounting Methods



Classic Installation
Conventionally rail-mounted where back space permits



Side Installation
Mounted on ceiling adjacent to drive rail where back space is limited



Wall Installation
Mounted on side wall of garage where power supply is not available on ceiling (optional cable extension kit required)

● 4 Different Power Supply Options



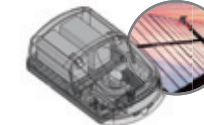
Transformer
(Model: T12/T20)



SMPS
(Model: S12/S20)

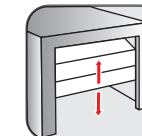


SMPS + Batteries
(Model: D12)

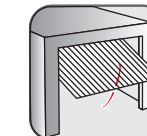


Batteries + Solar
(Model: SB12)

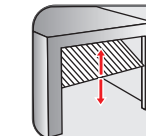
● 5 Different Door Types



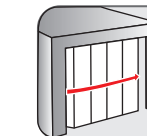
Sectional Doors



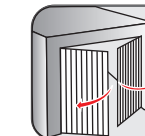
Canopy (Jamb Type)
Tip-up Doors



Retractable (Track Type)
Tip-up Doors



Side Opening
Sectional Doors



Barn (Swing) Doors

AVANTI®
GARAGE DOOR OPENERS



Add Colour to Your Life

● Open your eyes to a world of colour

Now you can have the colours of the rainbow in the palm of your hand. Welcome to our new range of transmitters. Compact yet powerful they provide a stylish alternative to their bland looking counterparts. And their beauty is not just skin deep. Our state of the art rolling code technology provides over 4 billion random code combinations ensuring that your safety and security are never compromised.

AVANTI

Technology – An Open and Shut Case

AVANTI is the one box solution to your garage door automation requirements. From the smallest to the largest garage doors AVANTI delivers the features and performance demanded by today's consumers.



Installation Flexibility

AVANTI can be assembled and installed within 30 minutes. The Control Box can be mounted either on the drive rail, independently on the ceiling along side the drive rail, or on a side wall of the garage (optional cable extension kit required). Our unique sliding mounting block affords 750mm of fore and aft travel. No longer will installers have to adapt the garage to the opener because AVANTI will adapt to your garage!



State Of The Art Radio

Standard four channel transmitters with 433.92 MHz hopping code technology provide state of the art security similar to those found in the most expensive car and home alarm systems. Adding our optional universal receiver that holds up to 384 codes allows you to utilize your hand transmitter on many additional accessories, such as automatic gate motors, home alarm systems, and main gates or doors of communal car parks - total control in the palm of your hand!

Energy Saving Technology

AVANTI is an "Energy Saving Wonder". A highly innovative design of the control board and the introduction of the "Sleep-Mode" enable AVANTI to reach a record low Stand-by Power Consumption. Since AVANTI Solar (SB12) works absolutely independently from the power grid, it can truly lay claim to being a real "Zero-Emissions-Opener".



Safe And Secure

Your child and pets are safe! Correctly set, your door reverses if obstructed while closing and stops if obstructed while opening. The patented Dual Safety Obstruction Force Adjustment modes ensure that the Opener can be optimized to suit virtually any sectional or tip-up type garage door.

ADAPTIVE MODE – constantly monitors incremental drive force value changes occurring due to seasonal conditions and garage door ageing, resulting in enhanced safety and minimized chances of garage door ghosting. MANUAL MODE – features conventional one time Safety Obstruction Force value adjustment and is more suited for use on badly worn or improperly balanced garage doors.

Genuine 2-wire or aftermarket 4-wire Safety Beams may be connected to the AVANTI for additional peace of mind.



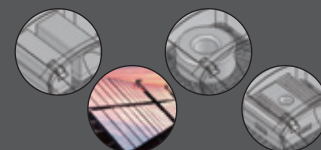
Power Supply Options

Transformer (T12/T20) - Conventional 24V transformer powered opener.

Switch Mode Power Supply (SMPS) - Offers a host of advantages over transformer powered AVANTI including 25% more power, minimal running speed drop under heavy load conditions, brighter courtesy light function and is unaffected by power spikes or brown outs.

SMPS + Batteries (D12) - Never be locked out of your garage again! The unique and patented D12 design concept runs on Switch Mode Power Supply as the main power source but automatically switches to Back-Up Battery power during a power cut. All of this dual power technology is contained in the same stylish housing as single power AVANTI.

Solar (SB12) - Battery Powered with solar panel charger - the ultimate green opener.



Fully Featured Functionality

Choosing AVANTI means choosing the most technologically advanced and user friendly Opener available on the market! Soft Stop / Start, Door Service Monitor, Auto Close, Back-Jump and Vacation Mode are only a few of the many features available to AVANTI owners!



Robust "Traveling Motor"

The traveling motor head of AVANTI runs along the track on a stationary chain and is directly connected to the door panel. The door opens and closes together with the traveling motor. This makes AVANTI an extremely quiet, durable and reliable opener. The release mechanism can be engaged and disengaged in any position along the carriage. The motor is self-locking, thus securing against burglary - no additional locking mechanisms are necessary!

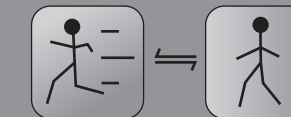
Compact Shipping Dimensions

Reduce your shipping and storage costs - choose our palletized one box system for ease of transportation and storage or our 2 box system to maximize shipping quantity. Either way AVANTI provides the versatility demanded by today's business environment.



Adjustable Force And Speed Control

The maximum traction force of AVANTI can be adjusted from 500N to 1200N (T20/S20: 500N to 1500N) according to the size of the door. Dependent on individual requirements the running speed of the opener may also be adjusted within a range of 100% ~ 60% of maximum.



Auto Close

Auto Close can enhance the security of your property by ensuring that your garage door is never unintentionally left open (must be used in conjunction with Safety Beams).



Door Service Motor (DSM)

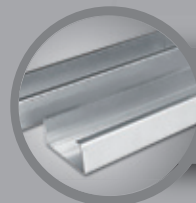
Our patented DSM system continually monitors the spring balance of the garage door and signals a warning before the imbalance reaches potentially dangerous levels.

The Quiet Achiever



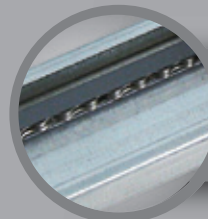
Release Handle

Ergonomically designed for comfortable use the release handle manages to combine form and function in one stylish package



Rail

Zinc plated for maximum protection and precision rolled to ensure perfect shape and maximum strength for the life of the product



Chain

Nickel plated for ultimate corrosion resistance the unique stationary chain eliminates all the "rattle and clunk" normally associated with conventional chain drive systems



Chain Tensioning

Over tensioned and under tensioned chains are now a thing of the past. No more guesswork - simply tighten the chain tensioning bolt until it aligns with the arrow tip and the tensioning springs will take care of the rest



Mechanical Limits

1 to 1 ratio mechanical limits will never shift and cannot be affected by power outage or power spikes - just 2 of the many syndromes that plague openers with electronic limit systems



Release Mechanism

The release mechanism embodies many unique and noteworthy features including:

- * pull once to disengage, pull once again to re engage
- * engage and lock in any position
- * will engage or disengage regardless of pull angle
- * steel cable will never fray, weather or snap



Motor

AVANTI boasts the only DC motor in the world which has been specifically designed to meet the high demands of garage door openers. Traditional DC openers use a windscreen wiper motor borrowed from a car. The AVANTI DC motor has been designed from the ground up to suit the rigours of garage door openers and is the ONLY DC motor of its type to offer 2 roller bearings on the drive shaft



Mounting Block

Why adapt the garage to suit the opener when AVANTI can adapt to suit the garage? The sliding mounting block can be positioned within a fore and aft range of 750mm to align with an appropriate fixing point in the garage



Easily Accessible Controls

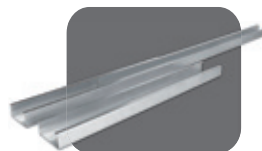
Hinge open the light cover to expose the colour coded and clearly labeled controls and connections. No other comparable product combines such functionality and user friendliness

Engineering Plastics

A complete AVANTI operating system is comprised of no less than five different types of engineering plastics. Each compound has been specifically selected to provide strength, longevity and aesthetic appeal

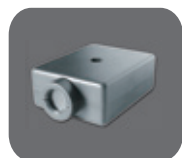
AVANTI[®]
GARAGE DOOR OPENERS

Accessories



Extension Kits

Do you own an unusually high or a sideways folding door? No problem. Just add one or multiple 350/1060mm rail extension kits to increase opener travel! Extension kits come complete with all required hardware and in typical AVANTI fashion, assembly can be carried out within only a few minutes.



Safety Beams

Safety Beams provide the last word in safety by passing an invisible eye across the path of your garage door and will thus prevent the door from closing whenever there is an object in its path. Couple this with our auto close feature and your garage door will never be inadvertently left open. Safety and Security for a modest additional investment!



Digital Wireless Keypad

Want to add the convenience of access through the garage door without the need to carry a transmitter? Fit one of our wireless digital key pads outside your home. They feature the same rolling coded technology as our transmitters.



Wall-mounting Kit

Only the unique AVANTI operating system allows removal of the control box from the drive rail in order to minimize the installed length of the product. By adding a Wall Mounting Kit the control box can also be mounted on the front or side wall of the garage.



Universal Receiver

Add an AVANTI universal receiver to any of your existing home automation or burglar alarm systems and enjoy the convenience of total control in the palm of your hand. AVANTI universal receivers, which can hold up to 384 transmitters, feature 12 ~ 24V AC or DC input and normally closed and normally open outputs making them compatible with virtually any existing system.



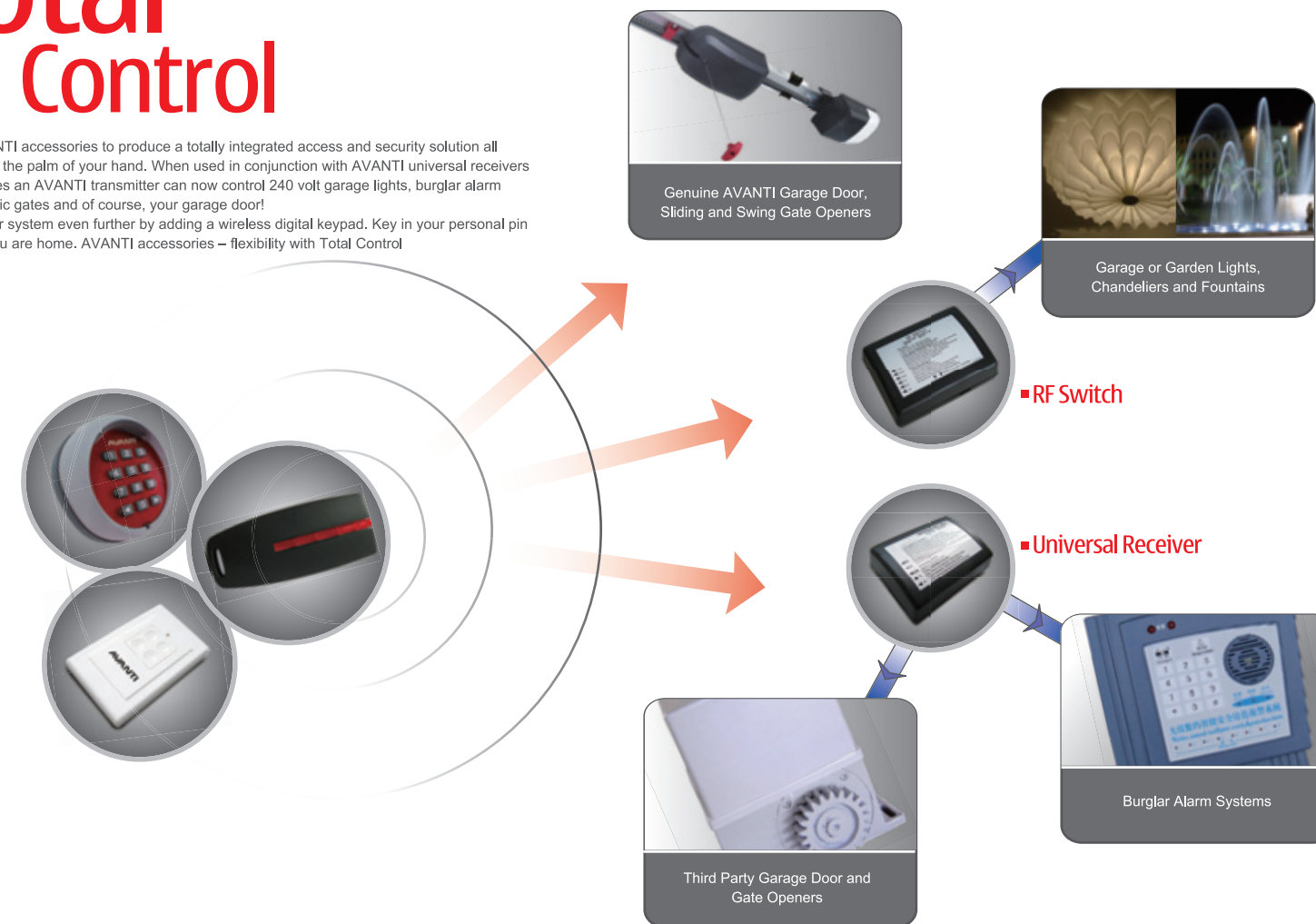
Wireless Wall Switch

Stylish and convenient the 4 button Wireless Wall Switch can be mounted in any indoor location without the need to run expensive wiring. The switch can control multiple opener functions and can even be unhooked from its mounting and carried around.

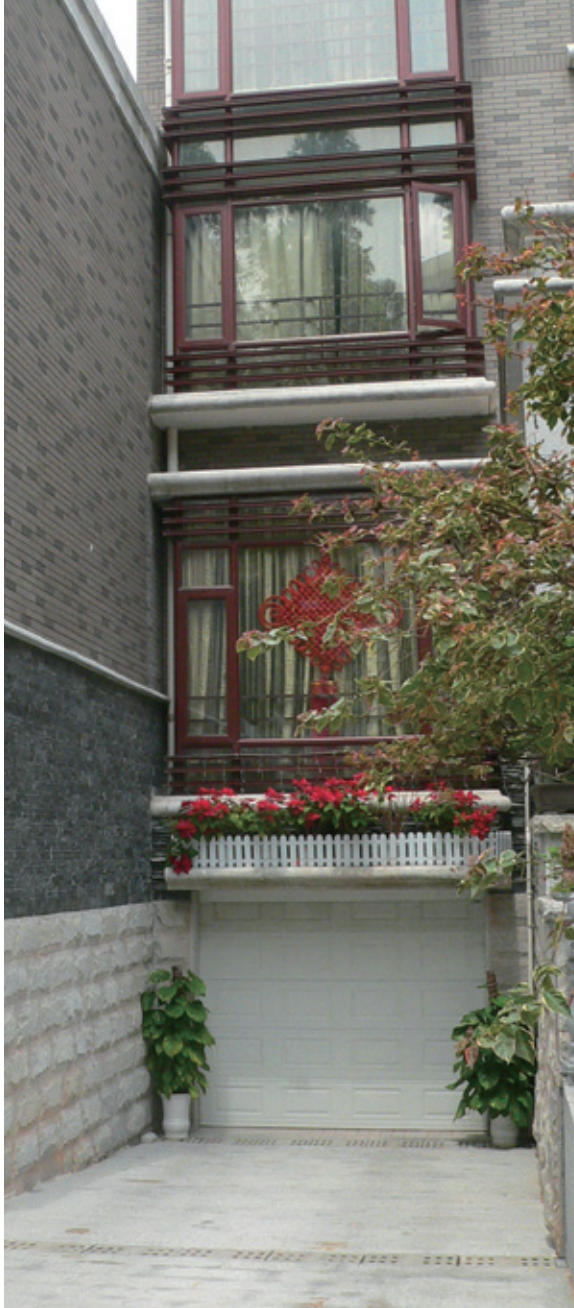
Opening Soon Near You

Total Control

Combine AVANTI accessories to produce a totally integrated access and security solution all controlled from the palm of your hand. When used in conjunction with AVANTI universal receivers and RF switches an AVANTI transmitter can now control 240 volt garage lights, burglar alarm systems, electric gates and of course, your garage door! Customize your system even further by adding a wireless digital keypad. Key in your personal pin number and you are home. AVANTI accessories – flexibility with Total Control

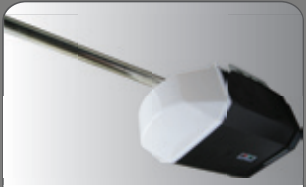


| TECHNICAL SPECIFICATIONS | | | |
|---|---------------------|--|---|
| | | AVANTI P12 Classic Opener - Powerful and Reliable | AVANTI P20 Heavy Duty Opener - For Duty Cycles up to 30% |
| Maximum Traction Force | | 1200N (Adj. 500N~1200N) | 1500N (Adj. 500N~1500N) |
| Standard Garage Door Sizes | | 4m² ~ 15m² | 4m² ~ 18m² |
| Wooden Garage Door Sizes | | 4m² ~ 10m² | 4m² ~ 15m² |
| Commercial Door Sizes | | Not Suitable | 4m² ~ 15m² |
| Motor (Input Voltage / Power Output) | | 24V DC ~120W | 24V DC ~120W |
| Radio | | 433.92MHz, 80 Meters, 22 Transmitters, KEELOG Technology | |
| Voltage Supply Source | | 110VA Transformer / SMPS | 150VA Transformer / SMPS |
| Running Speed | | Adjustable 100~160mm/s | Adjustable 100~160mm/s |
| Input Power | | 200 ~ 240VAC 50~60Hz (T) 100 ~ 240VAC 50~60Hz (S) | 200 ~ 240VAC 50~60Hz (T) 100 ~ 240VAC 50~60Hz (S) |
| Maximum Current | | 5.5 Amps | 10 Amps |
| Safety Devices | | Manual Or Automatic Safety System; Safety Beam Connector | |
| Power Cut | Max. Standby Time | 0 Hours | 0 Hours |
| | Max. Running Cycles | 0 Cycles | 0 Cycles |

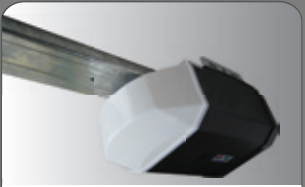


AVANTI®

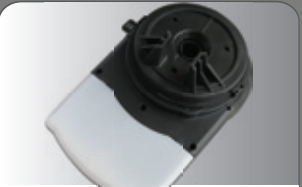
A Product For
Every
Application



AC-Powered
Sectional Door Openers



AC-Powered
Sectional Door Openers



One Piece
Rolling Door Openers



Two Piece
Rolling Door Openers



Swing Gate Openers



Sliding Gate Openers