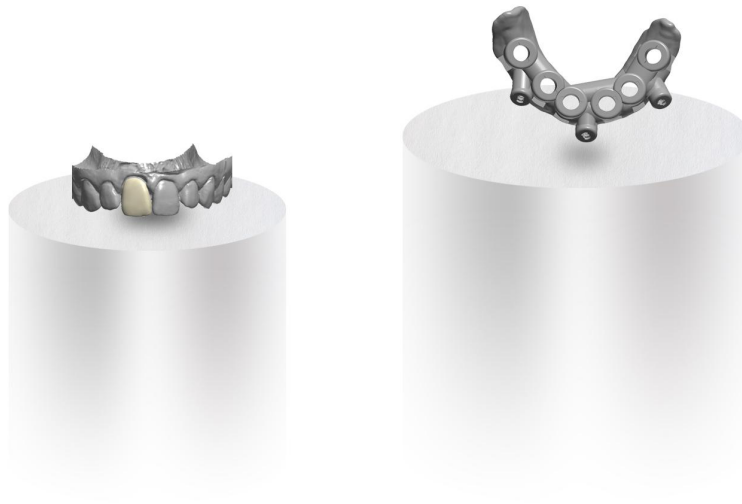
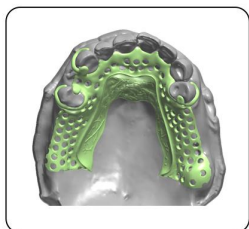


## ***Dental CAD design***

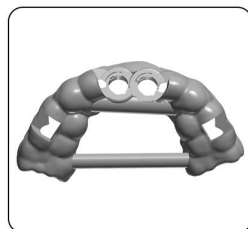
With our dedicated team, implement your digital workflow.  
We put all our passion for dental design and provide you the  
professional design service to grow your dental practice and lab.



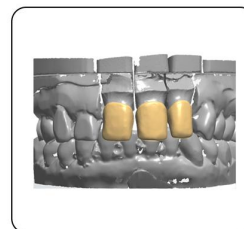
## *Design services*



RPD Frame



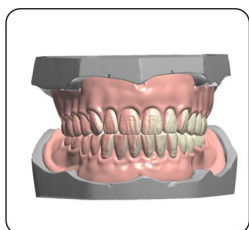
SurgicalGuide-Partial



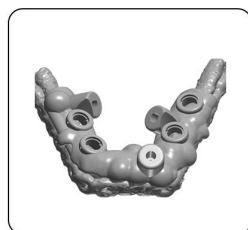
Coping



Screw-Retained Crown



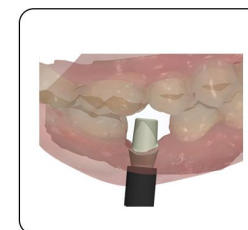
Full dental



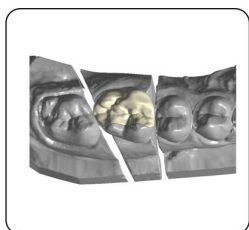
SurgicalGuide-Bone support



Crowns&Bridge



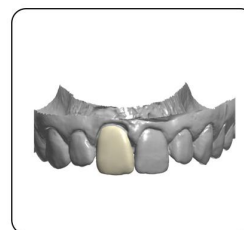
Custom Abument



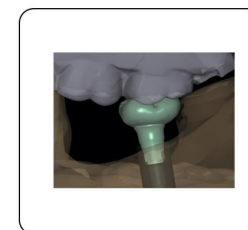
Inlay



SurgicalGuide-ALL ON X



Veneer



Integrate Abument Crown

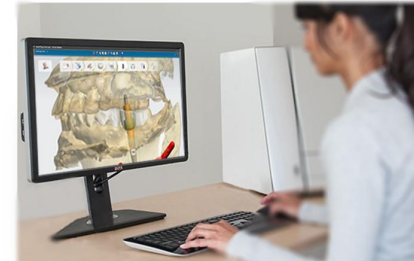


# *Why Acme design service?*

## 01

### Professional

We have a professional CAD design team with years of design experience and communication skills, dedicated to implant, restorations and orthodontic CAD design.



## 02

### Efficiency

The case design can be completed in as little as 2 hours to help the commitment of one-day visit.

## 03

### Convenient

Acme cloud platform provides you with convenient design services. Enable you to check it everywhere and communication with our team anytime.



# ***You Scan, We Design!***

## **No.2**

### **Send data**

Send the STL or  
other format files to Acme  
through our platform or email



## **No.4**

### **Finalized**

The confirmed design file  
will be sent back to you and  
the fabrication of the case can  
be done by yourself or by Acme



## **No.1**

### **Scanning**

Start by intraoral  
scanning your patient or  
model scanning the case model



## **No.3**

### **Design**

Our professional designer will design  
the case according your requirements and  
you can confirm the case by logging in our platform

