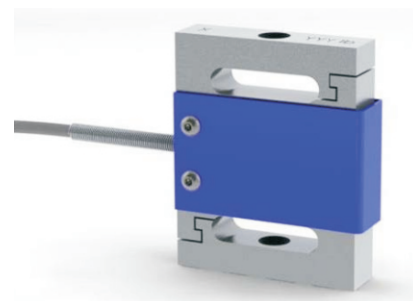


S-beam Load Cell

Model LSBMC

The S-beam Load Cell is a bi-directional Aluminum strain gauge based transducer with high performance and built-in temperature compensation. This design provides better than $\pm 0.05\%$ (full scale) non-linearity and includes overload protection in both tension and compression directions. Options include IEEE1451.4 TEDS capability.



SPECIFICATIONS

Specifications	Accuracy
Rated capacity(R.C.)	25, 50, 100 & 250 lbf
Rated output(R.O.)	2mV/V
Nonlinearity	0.05% of R.O.
Total error	0.05% of R.O.
Repeatability	0.05% of R.O.
Zero balance	$\pm 1.0\%$ of R.O.
Temperature effect, on rated output	0.018% of LOAD / $^{\circ}\text{C}$
Temperature effect, on zero balance	0.009% of R.O. / $^{\circ}\text{C}$
Temperature range, compensated	-15~71 $^{\circ}\text{C}$
Operating temperature range	-51~93 $^{\circ}\text{C}$
Excitation recommended	5V
Safe overload	150% R.O.
Overload	1000% R.O.
Input impedance	1000 Ω nom.
Output impedance	1000 Ω nom.
IP rating	IP 40
Weight	140g
Connector	DB9 male or female

DIMENSIONS TABLE

unit:mm

Model	Capacity (lbf)	Thread
LSBMC-2M-P	25	M6 x 1
LSBMC-2U-P	25	1/4 - 28
LSBMC-2M-P	50	M6 x 1
LSBMC-2U-P	50	1/4 - 28
LSBMC-2M-P	100	M6 x 1
LSBMC-2U-P	100	1/4 - 28
LSBMC-2M-P	250	M10 x 1.5
LSBMC-2U-P	250	1/4 - 28

