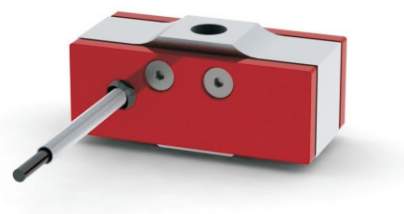


# Low Profile Tension and Compression Load Cell

## Model LPT

The Low Profile Tension and Compression Load Cell is a bi-directional Aluminum strain gauge based transducer with high performance and built-in temperature compensation. This design provides better than  $\pm 0.1\%$  (full scale) nonlinearity. Options include IEEE1451.4 TEDS capability.



## SPECIFICATIONS

Specifications	Accuracy
Rated capacity (R.C.)	100N, 200N, 300N, 500N
Rated output (R.O.)	2mV/V
Nonlinearity	0.1% of R.O.
Repeatability	0.05% of R.O.
Hysteresis	0.1% of R.O.
Zero balance	$\pm 1.0\%$ of R.O.
Temperature effect, on rated output	0.018% of Load / °C
Temperature effect, on zero balance	0.018% of R.O. / °C
Operating temperature range	-51~93°C
Excitation recommended	5V
Safe overload	150% R.O.
Bridge resistance	1000Ω nom.
Weight	51g
Connector	DB9 male or female

## DIMENSIONS TABLE

unit:mm

