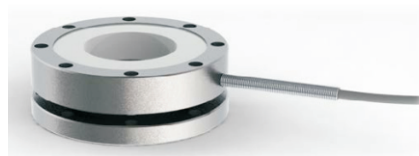


PRESS FORCE LOAD CELL

Model LAX

These press force load cells are strain gauge based for press-force monitoring. This type offers capacities up to 100 kN with compensated temperature performances. Cable is contained within a stainless steel spring for strain relief purposes for additional protection.



SPECIFICATIONS

Specifications	Accuracy
Rated capacity(R.C.)	2kN, 5kN, 10kN, 20kN, 50kN, 100kN
Rated output(R.O.)	1mV/V
Nonlinearity	0.25% of R.O.
Hysteresis	0.25% of R.O.
Repeatability	0.1% of R.O.
Zero balance	±2.0% of R.O.
Temperature effect, on rated output	0.02% of R.O. / °C
Temperature effect, on zero balance	0.02% of R.O. / °C
Temperature range, compensated	-15~70°C
Operating temperature range	-40~70°C
Bridge resistance	770Ω
Material	Stainless steel
Protection class	IP64
Excitation recommended	2-12V
Safe overload	200% R.C.
Cable length	3m

DIMENSIONS TABLE

unit:mm

Capacity(KN)	A	B	C	D	E	H	K	Z	M	T	LK	N
2 / 5 / 10 / 20	69.7	54	33	54	70	25	9	0.5	M5, 8x45°	6	62	M5, 8x45°
50 / 100	111.5	97	70	97	112	35	13	1.1	M6, 8x45°	10	104	M6, 8x45°

