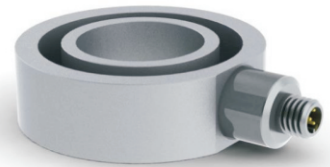


Hermetic Through Hole Load Cell

Model LAW4

The model LAW4-1 is a stainless steel strain gauge based load cell with compensated temperature performance. This type is fully laser welded and provides measurements up to 20,000 lb with better than $\pm 0.5\%$ (full scale) non-linearity.



SPECIFICATIONS

Specifications	Accuracy
Rated capacity(R.C.)	2k, 5k, 7.5k, 10k, 20k LBS
Rated output(R.O.)	2mV/Vnom.
Nonlinearity	0.5% of R.O.
Hysteresis	0.5% of R.O.
Repeatability	0.1% of R.O.
Zero balance	$\pm 5.0\%$ of R.O.
Temperature effect, on rated output	0.01% of R.O. / °C
Temperature effect, on zero balance	0.01% of LOAD / °C
Temperature range, compensated	-15~71°C
Temperature range, safe	-51~80°C
Input impedance	770Ω
Protection class	IP68
Excitation recommended	5V
Safe overload	150% R.C.
Connector	8-PIN M12 MALEK

DIMENSIONS TABLE

unit:inch

MODEL	ID	SCREW SIZE
LAW4-1	3.45mm [.136"]	1/8"
	5.11mm [.201"]	3/16"
	6.76mm [.266"]	1/4"
	8.43mm [.332"]	5/16"
	10.08mm [.397"]	3/8"
	11.91mm [.469"]	7/16"
	13.49mm [.531"]	1/2"
	15.09mm [.594"]	9/16"
	16.66mm [.656"]	5/8"
	19.84mm [.781"]	3/4"
	23.01mm [.906"]	7/8"
	26.19mm [1.031"]	1"
	32.54mm [1.281"]	1 1/4"
	38.89mm [1.531"]	1 1/2"

