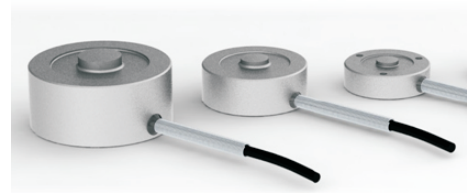


BUTTON LOAD CELL SPECIFICATION

Model LABM

These button load cells are strain gauge based transducers with temperature compensation and excellent overall performance. This type provides a range of capacities up to 150 kN or 30klb with better than $\pm 0.5\%$ (full scale) non-linearity. Three tapped holes are provided on the underside for ease of mounting. Fully welded cover, amplified and digitised versions are available on request.



SPECIFICATIONS

| Specifications | Accuracy |
|-------------------------------------|---|
| Rated capacity(N) | 100, 200, 500, 1k, 2k, 5k, 10k, 15k, 20k, 50k, 100k, 150k N |
| Rated capacity(LB) | 25, 50, 100, 250, 500, 1k, 2k, 5k, 10k, 15k, 20k, 30k LB |
| Rated output(R.O.) | 2mV/V |
| Nonlinearity | 0.5% of R.O. |
| Repeatability | 0.1% of R.O. |
| Total error | 0.8% of R.O. |
| Zero balance | $\pm 2.0\%$ of R.O. |
| Temperature effect, on rated output | 0.02% of FS / °C |
| Temperature effect, on zero balance | 0.01% of FS / °C |
| Temperature range, compensated | -15~70°C |
| Operating temperature range | -20~80°C |
| Excitation recommended | 5V |
| Safe overload | 150% R.C. |
| IP rating | IP 64 |

DIMENSIONS TABLE

unit:mm

| Capacity | D1 | D2 | H | L | A | B | G |
|--|-------|-------|-------|------|-----------|------|-------|
| 100 N 200 N 500 N | 25.4 | 5.33 | 15.75 | 1.27 | M3 | 5.59 | 19.05 |
| 25LB 50LB 100LB | 25.4 | 5.33 | 15.75 | 1.27 | #4-40 UNC | 5.59 | 19.05 |
| 1 KN 2 KN 5 KN 10KN 250LB 500LB 1K LB 2K LB | 31.75 | 8.13 | 9.91 | 1.27 | M4 | 6.35 | 25.4 |
| 15KN 20KN 50KN 5KLB 10KLB | 38.1 | 10.16 | 16.0 | 2.03 | M4 | 6.35 | 31.75 |
| 100KN 150KN 15KLB 20KLB 30KLB | 50.3 | 15.24 | 25.4 | 3.05 | M4 | 6.35 | 41.3 |

