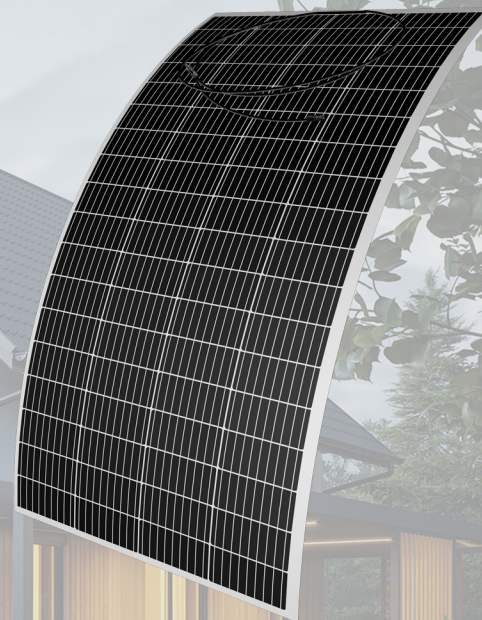


FLEXIBLE SOLAR PANEL 200W

High Conversion Efficiency

Power Tolerance 0~+3%

Outstanding Performance in Low-Light Irradiance Environments



Specifications

Model Type	PW-200M
Peak Power(Pmax)	200W
Maximum Power Voltage(Vmp)	40.32V
Maximum Power Current(Imp)	4.96A
Open Circuit Voltage(Voc)	48.6V
Short Circuit Current(Isc)	5.25A
Module Efficiency(%)	22.6%
Maximum System Voltage(V)	600VDC
Maximum Series Fuse Rating(A)	15A
Power Tolerance	0~+3%
Operating Temperature (°C)	-10~+70
Standard Test Condition(STC)	1000W/m ² ; AM 1.5; 25±2°C

Mechanical Characteristics

Cell Type	Mono166*83mm
NO. of Cells	4x18=72
Dimensions	1595x720x3mm
Weight	4.45±0.1Kg
Bending Degrees	15°
Backsheet	White
Junction Box	IP68, 2bypass diodes
Cables	60cm Length with MC4 connector

Temperature Ratings(STC)

Temperature Coefficients of Isc	+0.07%
Temperature Coefficients of Voc	-0.36%
Temperature Coefficients of Pmax	-0.38%

Mechanical Loading

Front Side Maximum Static Loading	5400PA
Back Side Maximum Static Loading	2400PA
Application Grade	Class A

Warranty

3 Years Workmanship Warranty