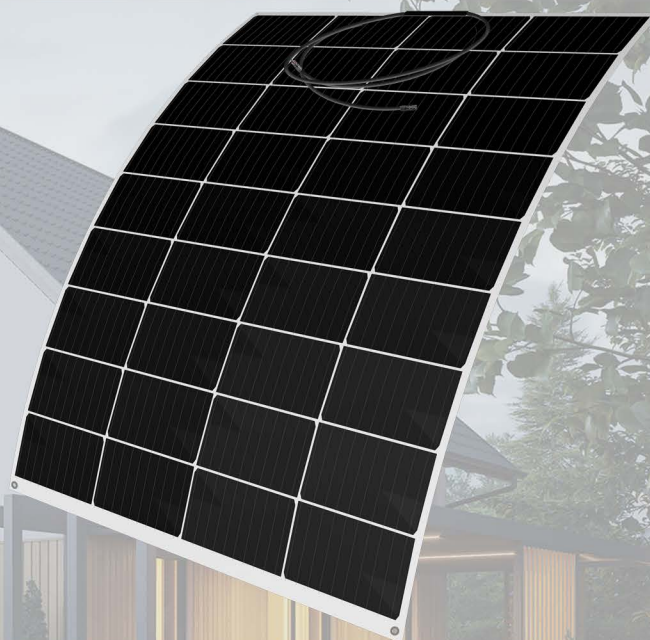


FLEXIBLE SOLAR PANEL 150W

High Conversion Efficiency

Power Tolerance 0~+3%

Outstanding Performance in Low-Light Irradiance Environments



Specifications

Model Type	PW-150M
Peak Power(Pmax)	150W
Maximum Power Voltage(Vmp)	19.8V
Maximum Power Current(Imp)	7.58A
Open Circuit Voltage(Voc)	23.76V
Short Circuit Current(Isc)	7.89A
Module Efficiency(%)	17.6%
Maximum System Voltage(V)	1000VDC
Maximum Series Fuse Rating(A)	15A
Power Tolerance	±3%
Operating Temperature (°C)	-20~+65
Standard Test Condition(STC)	1000W/m ² ; AM 1.5;25 ±2°C

Mechanical Characteristics

Cell Type	Mono182*121.33mm
NO. of Cells	4x9=36
Dimensions	1110x770x2mm
Weight	2.1Kg
Bending Degrees	15°
Backsheet	White
Junction Box	IP65/IP67
Cables	90cm Length with MC4 connector

Temperature Ratings(STC)

Temperature Coefficients of Isc	+0.06%
Temperature Coefficients of Voc	-0.32%
Temperature Coefficients of Pmax	-0.45%

Mechanical Loading

Front Side Maximum Static Loading	5400PA
Back Side Maximum Static Loading	2400PA
Application Grade	Class A

Warranty

3 Years Workmanship Warranty